



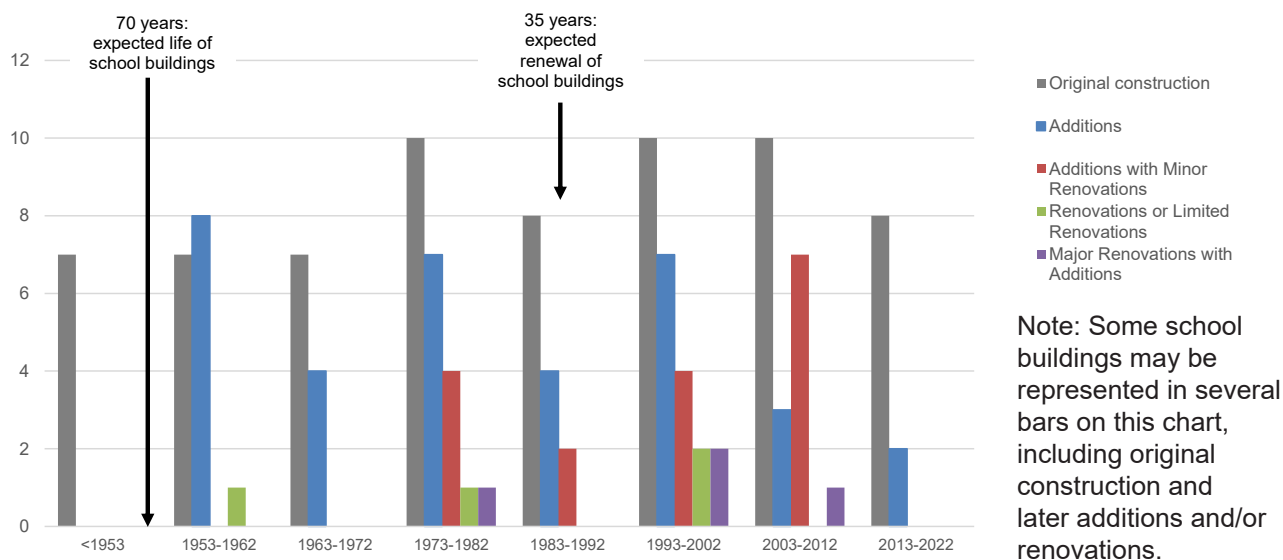
3. Inventory of School Facilities

INTRODUCTION

As of May 2023, FCPS operates and maintains 67 school buildings, or a total of almost 6.9 million square feet occupying almost 1,500 acres. In order to keep pace with evolving educational programs, changing enrollments and aging building systems, FCPS pursues new construction and devotes increasing resources to maintaining and renovating existing buildings.

Figure 3A shows the distribution of original building construction and improvements completed over time. At FCPS the goal is to renovate a building at 35 years of age and to fully renew the building at approximately 70 years of age. However, a feasibility study of a building may indicate a need for a renovation or replacement on a different timeline. Available funding may also impact the time when a building is renovated or replaced.

Figure 3A: FCPS Buildings and Improvements Over Time



Of the seven FCPS schools originally constructed more than 70 years ago, four have had only minor or systemic renovations. Three buildings more than 70 years old had major renovations more than 35 years ago. There are 27 buildings between 35 and 70 years old, 25 of which have had only minor renovations or systemic projects. Because of the delay in meeting renovation and replacement needs, FCPS has placed a priority on renovations and replacements over the next 10 years (see [Chapter 7](#) for details). See [Appendix BB](#) for a full historical timeline of capital building projects.

STATE OF MARYLAND ENROLLMENT CAPACITY

In addition to tending to the physical condition of buildings, FCPS must provide capacity based on student enrollment. The state rated capacity (SRC) of a school is defined in the Maryland Public School Construction

Program’s “Administrative Procedures Guide” (APG) and approved by the Maryland Department of Planning based on the number of various types of classrooms. A description of the calculation is given for each level in the sections below. The SRC is defined as “the number of students that the IAC or its designee determines that an individual school has the physical capacity to enroll and can be reasonably accommodated in a facility.” Relocatable classrooms are not included in the calculation of SRC. The SRC is intended to be used to determine utilization and is not intended to be used to determine class sizes. Whenever an addition is completed, a school has been renovated or the use of an existing school changes due to programmatic changes, FCPS recalculates the SRC. The new SRC is submitted to the IAC staff for approval. All Counties were required to recalculate the SRC for every school in 2019 and submit the new SRCs to the Maryland Department of Planning for approval. FCPS again updated the SRC for every school in February 2022. This document utilizes the most recent SRC. See [Chapter 4](#) for more information on the State’s evaluation of SRC.

BOARD OF EDUCATION CAPACITY POLICY

While the State dictates the procedure for calculating the enrollment capacity of school buildings, BOE Policy 202.2 governs the desired capacities of Frederick County school buildings:

The Board will use prototype designs whenever possible. Schools will be constructed to maximum approximate capacities:

- *Elementary schools - 700 students*
- *Middle schools - 900 students*
- *High schools - 1600 students*

All other schools will be constructed to accommodate the number of students determined by the Board to be appropriate to the school’s function. The Board of Education may authorize exceptions to the capacity figures shown above.

With the replacement of Waverley ES, the BOE authorized an exception to the maximum elementary school size and allowed for a capacity of 1019 to accommodate expected enrollments on the west side of Frederick City given that no other land was available at the time for construction of a school in this part of the County.

INVENTORY OF FACILITIES AND UTILIZATION

This EFMP uses a range of SRC percentages to evaluate utilization of schools. Corresponding colors are used throughout the plan to indicate utilization according to these ranges, as shown in Table 3A.

Table 3A: FCPS Percent of SRC Categorization

Percent of SRC	Description	ES	MS	HS
>120%	Significantly overcrowded; no additional residential development may be approved within attendance area per the County and municipal APFO, school construction projects to address significant overcrowding are a priority in the EFMP			
100-119%	Overcrowded; additional residential development may be prohibited or subject to school construction fees depending on APFO jurisdiction, school construction projects to address overcrowding included in 10-year EFMP if funding available			
90-99%	Fully utilized; FCPS closely monitors enrollment trends to determine if enrollment growth leads to long term capacity issues			
75-89%	Moderately underutilized; opportunities may exist to expand the attendance area or add educational programs; FCPS monitors enrollment trends			
<75%	Underutilized; opportunities may exist to change the attendance area or add new educational programs; FCPS monitors enrollment trends			

Where enrollment and school programming needs exceed the capacity of the building, FCPS uses relocatable classrooms to temporarily supplement space within the building. Some relocatable classrooms are utilized as traditional classrooms while others are used to provide student support space so that space within the buildings can be maximized for traditional classroom usage. See [Appendix K](#) for the inventory of relocatable classrooms.

Elementary Schools

For the 2023-24 school year FCPS will operate 42 primary and elementary schools (including the Carroll Creek Montessori, Frederick Classical, Monocacy Valley Montessori and Sabillasville Environmental Public charter schools). The SRC for these schools varies in size from 120 to 1,019 seats. FCPS provides a full day of elementary education to students from kindergarten through grade 5, and provides full-day or half-day Prekindergarten (pre-K) programs at select schools as described in the space programming section below. The Thurmont and Middletown communities have paired schools with separate administrations consisting of a primary school (pre-K through grade 2) and an elementary school (grades 3-5). New Midway/Woodsboro ES is one elementary school housed in two buildings. See [Appendix L](#) for a list of school facilities and grades served.

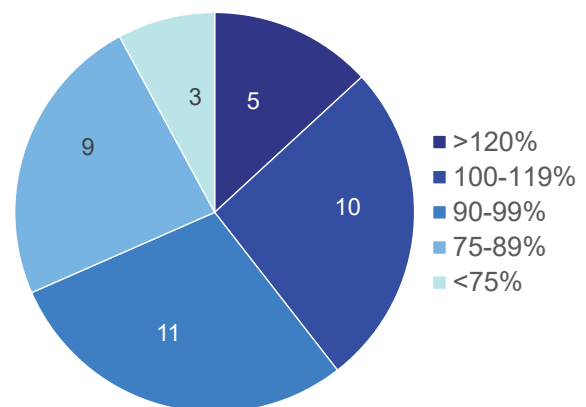
In addition to “core” facility space (administrative offices, health suite, media center, cafeteria), each school also contains spaces for physical education, art and music as well as special education resource rooms. Schools may also have space devoted to regional special programs, which are described more in the sections that follow. Student support spaces are not included in the SRC calculation for elementary schools. The formula for calculating the SRC of an elementary school is the total of the following:

<i>Prekindergarten</i>	<i>20 x number of classrooms</i>
<i>Kindergarten</i>	<i>22 x number of classrooms</i>
<i>Grades 1-5</i>	<i>23 x number of classrooms</i>
<i>Special Education</i>	<i>10 x number of classrooms</i>

The system-wide elementary school SRC for the 2023-24 school year will be 21,676, which is an increase from the previous year’s system-wide capacity of 21,378. The Brunswick ES replacement building will open with a capacity of 725. The system-wide percent of SRC at the elementary level for 2023-24 is projected to be 101%. See [Chapter 7](#) for projected percent SRC over time based on various funding scenarios.

While most elementary schools were below 100% of SRC as of September 30, 2022, as shown in Figure 3B below, 15 elementary schools were over 100% of SRC, including 5 that were at 120% of SRC or higher. Even with the opening of the Brunswick ES replacement in the fall of 2023, 16 elementary schools are projected to be over capacity in the 2023-24 school year.

Figure 3B: Number of Elementary Schools* by SRC Range (September 30, 2022)



*Excludes charter schools because capacity is determined by contract.

Middle Schools

Middle school (grades 6, 7, and 8) is designed for students in transition between childhood and adolescence. Middle school programs seek to expand course offerings by providing specialized facilities for fine arts, technology education, science and physical education.

FCPS will operate 17 middle schools including Carroll Creek Montessori, Frederick Classical, Monocacy Valley Montessori and Sabillasville Environmental Public charter schools. These schools vary in size from an SRC of 774 to 1,158 with the exception of the charter schools which have capacities as low as 60.

Each middle school attendance area generally contains two to three elementary schools. Several middle schools serve portions of four to five elementary schools. Not all elementary schools directly feed to one middle school. Several are split between two middle schools. Three middle schools are located on the same campus as high schools which permits some shared use of facilities.

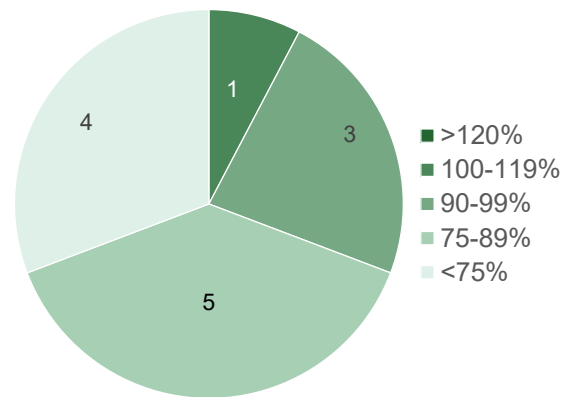
The formula for calculating the SRC at the middle school level assumes 25 students per teaching station including specials such as music and art and uses a factor of 85% to account for teacher planning time. The number of teaching stations in a gymnasium is dependent on the size of the gym. To calculate the secondary school SRC:

<i>Typical classrooms</i>	<i>0.85 x 25 x number of classrooms</i>
<i>Gym</i>	<i>0.85 x 25 x number of teaching stations</i>
<i>Special education</i>	<i>10 x number of classrooms</i>

For the 2022-23 school year, the system-wide middle school SRC totaled 12,915 seats. The system-wide middle school SRC will total 12,921 for the 2023-24 school year. The system-wide projected SRC percentage at the middle school level for the 2023-24 school year will be 82%.

Although system-wide enrollments are acceptable, the capacity at individual schools varies as shown in Figure 3C below. Most middle schools have capacity available. The recent opening of the addition at Oakdale MS addressed capacity issues at that school. However, Monocacy MS and Urbana MS have been operating over capacity. The planned addition to Crestwood MS in FY24, and a proposed adjustment to the attendance boundaries between Ballenger Creek, Crestwood, Governor Thomas Johnson, Monocacy, and West Frederick middle schools as part of the Crestwood Area Redistricting Study, is expected to rebalance enrollments at the middle schools within the study area.

Figure 3C: Number of Middle Schools* by SRC Range (September 30, 2022)



*Excludes charter schools because capacity is determined by contract.

High Schools

FCPS currently has 10 high schools serving students in grades 9-12 and one charter school, Monocacy Valley Montessori School, currently serving students in 9th grade. Additional grades will be added to Monocacy Valley Montessori until September 2026 when the school will serve grades 9-12. High schools encourage students to grow personally and academically by providing a wider range of course offerings than middle schools. FCPS high school facilities are built to accommodate a wide-ranging curriculum. High schools also provide facilities that are often unique and heavily used by the larger community. High school buildings contain auditoriums, multiple gymnasiums, stadiums and other athletic facilities.

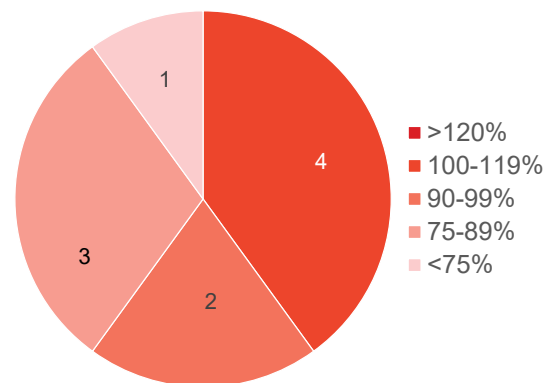
FCPS encourages use of these facilities by community groups when they are not needed for the school program. High schools in Frederick County have attendance areas that incorporate one or two middle school attendance areas.

The formula for calculating the SRC at the high school level is 25 students per teaching station and uses a factor of 85% to account for teacher planning time:

<i>Typical classrooms</i>	$0.85 \times 25 \times \text{number of classrooms}$
<i>Gym</i>	$0.85 \times 25 \times \text{number of teaching stations}$
<i>Special education</i>	$10 \times \text{number of classrooms}$
<i>Career Tech</i>	$0.85 \times 20 \times \text{number of classrooms}$

The SRC at high schools varies from 928 at Brunswick High School (HS) to 2,171 at Governor Thomas Johnson HS. In 2023-2024, Monocacy Valley Montessori is adding a high school program with an SRC of 60. The system-wide high school SRC for the 2022-23 school year was 14,941 seats. The system-wide high school SRC for the 2023-24 school year with the addition of the Monocacy Valley Montessori high school program will be 15,001. The system-wide projected percent of SRC at the high school level for 2023-24 is 99%, with four schools operating at or over 100% of SRC, including Walkersville HS at 113%, Frederick HS at 115%, Oakdale HS at 112% and Urbana HS at 105%. The percent capacity as of September 30, 2022 is shown in Figure 3D below.

Figure 3D: Number of High Schools by SRC Range (September 30, 2022)



*Excludes charter schools because capacity is determined by contract.

Charter Schools

FCPS has approved four public charter schools. Any student in the county may apply to enroll, with new students selected via lottery when interest exceeds program capacity. Students attending these schools are FCPS students taught by FCPS teachers. However, each Charter has its own governing council that establishes the curriculum and oversees the school's budget. The capacity of each school is determined by a contract.

Carroll Creek Montessori School is located in leased space on Corporate Court in the Ballenger Creek area. The school is projected to have an enrollment of 296 students in grades pre-K through 8 in the 2023-24 school year. This school offers an instructional program centered on the Montessori method with emphasis on the acquisition of Spanish language.

Frederick Classical Charter School is located in leased space on Spires Way in Frederick City. The school offers a curriculum that emphasizes traditional content taught using research-based curricula to grades K through 8. The school is projected to have an enrollment of 372 students in the 2023-24 school year.

Monocacy Valley Montessori School is located in Frederick City in a former office building. This school offers an instructional program centered on the Montessori Method for grades pre-K through 9. One additional grade will be added at the high school level each year until the school serves grades pre-K through 12 in 2026. The school is projected to have an enrollment of 352 students in the 2023-24 school year.

Sabillasville Environmental Public Charter School is located in leased space in the former Sabillasville Elementary School building which is owned by FCPS. The school integrates a focus on environmental science to provide students the opportunity to develop an appreciation of classical liberal arts, the environment and agriculture. The school is projected to have an enrollment of 168 students for the 2023-24 school year in grades K-7. Grade 8 will be added in the 2024-25 school year.

Other Frederick County Public School Facilities

Heather Ridge School is a 31,553 square foot alternative middle/high school educational facility for students who require a highly structured setting. The school offers appropriate curriculum in the context of individualized behavior-management programs, family counseling, and other services. Additional information regarding this school can be found in [Appendix S](#). Enrollment in September 2022 was 47 students.

Rock Creek is located in a 79,474 square foot facility on a shared campus with Walkersville MS in the Town of Walkersville. Rock Creek provides individualized special education programs for students from 3-21 years of age. An appropriate curriculum is offered in self-contained classrooms, as well as related services in such areas as adaptive physical education, physical therapy, swimming, pre-vocational training and occupational therapy. Additional information regarding this program can be found in [Appendix T](#). Enrollment in September 2022 was 75 students.

Career and Technology Center (CTC) is an 86,681 square foot facility located on the Frederick Community College campus. The building opened in 1977 with an addition in 1986. There have been no renovations to the building other than systemic improvements. Students in grades 10-12 may enroll. At the CTC, introductory training is offered in various professions such as criminal justice, computer-aided design, bio-medical technology, culinary arts, cosmetology, tv/multimedia production, building trades and computer networking. Some courses provide certifications or college credit through agreements with Frederick Community College. Students attending CTC remain enrolled at their home school and attend CTC for half a day. Additional information regarding this program can be found in [Appendix U](#).

Earth and Space Science Lab (ESSL) is a 10,771 square foot facility on the Lincoln ES campus. This facility includes two classrooms, a planetarium, tanks housing live organisms, and a variety of resources for hands on instruction in meteorology, astronomy, oceanography, and geology for all students in grades 1-5. The building opened in 2009.

Lincoln "A" building is a 20,334 square foot building located on Madison Street in the City of Frederick housing the Success program and Child Find. The Success program is a transition education program for students ages 18-21 who have an IEP and are pursuing a Maryland School Certificate of Completion. Child Find provides a continuum of special education and related services to children ages 3-5 with disabilities. The Boys and Girls Club of Frederick County leases a portion of the building and occupies the building when school is not in session.

Future School Sites

As noted in [Chapter 2](#), FCPS has obtained future school sites from developers through the development review process. As of May 2023, FCPS owns five sites available for future schools with three additional sites planned, but not yet dedicated. Six of the sites owned by the Board of Education or planned for future schools are elementary school sites ranging from 7-20 acres. The other two sites are middle school sites. FCPS is continuing to work with developers and the City and County governments to obtain additional future school sites when possible. Additional details on the future school sites are shown in [Appendix J](#).

Due to capacity needs in areas where sites have not been dedicated, future school sites will need to be purchased with County capital funds collected as part of the impact fees paid at the time a residential

Redistricting occurs when attendance boundaries are established for a newly constructed school or to balance enrollments between existing adjoining schools. While allowable under the BOE's attendance boundary policy, FCPS has tried to reduce the number of split feeders where one elementary feeds to two middle schools or one middle school feeds to two high schools. However, sometimes split feeders are necessary to balance student populations.

Administrative Facilities

Administrative facilities are housed in several locations. The FCPS central office is located at 191 South East Street in downtown Frederick City. Maintenance and operations and transportation are located at the 7446 Hayward Road and Thomas Johnson Drive complex, on the north side of Frederick City. Bus storage and vehicle maintenance also take place at this complex. Technology support services and the warehouse are currently located on Thomas Johnson Drive but will be relocated to leased space on English Muffin Way in 2023. In Walkersville, FCPS maintains an office for the FCPS Food Services in the former Walkersville library facility and the Learning Leadership Center is located in the Walkersville B building that formerly housed the Success program. This facility is located at 44 W. Frederick Street and is in fair condition.

FCPS completed a feasibility study in September 2017 evaluating the Transportation Department's facilities and future needs. The study recommended replacement of the existing facility and eventual construction of a satellite facility totaling 48,500 square feet as well as a need for additional bus parking space totaling 10.6 acres. The construction of a new bus depot is planned for FY26.

SPACE PROGRAMMING

In addition to growth in enrollments generally, schools must continue to respond to changes in instructional programs offered by FCPS. These changes in instruction are the result of state requirements or local initiatives. The following sections outline how FCPS adapts space programming to meet the evolving needs of students.

Prekindergarten Program:

FCPS' prekindergarten (pre-K) program serves children ages three and four. Pre-K enrollment is prioritized based on income eligibility or factors that increase a child's risk of not being successful in school. Total enrollment in the pre-K program has increased significantly since the program began in 2005, from 374 students to 1,548 students in September 2022. For the 2022-23 school year, there are 51 general education, 19 special education and 5 Charter pre-K classrooms; a total of 75 pre-K classrooms. The total number of pre-K seats is 1,829 including 980 full day seats, 80 half day seats, 694 specialized seats and 75 charter seats.

The Blueprint for Maryland's Future Act (Act) was established in February 2021. This Act altered the Prekindergarten Expansion Grant Program (Program). The purpose of the Program is to "broaden the availability of high-quality prekindergarten and school readiness services throughout the State for children and their families in coordination with the publicly funded full-day kindergarten" created by Blueprint for Maryland's Future. In addition to establishing a fund for the expansion of the Program, the Act established Tier 1, Tier 2 and Tier 3 eligibility requirements based on family income, criteria for eligible private providers, a maximum student-teacher ratio, teacher qualifications, curriculum standards, and local reporting requirements. The Act also provided that the availability of prekindergarten slots be prioritized by Tier 1 children, children with disabilities regardless of income, homeless youth, and children from homes in which English is not the primary language spoken. The provisions of this Act went into effect beginning with the 2022-23 school year when enrollments were based on Tier 1 students. The other provisions of the Act will be fully implemented by the 2025-26 school year.

It is anticipated that FCPS will need a total of 87 pre-K classrooms for the 2023-24 school year to implement the requirements of the Act. The 87 classrooms include 56 general education, 26 special education, 3 pre-K classrooms at Frederick, Tuscarora and Oakdale high schools, and 5 charter pre-K classrooms for a total of 1,502 equated pre-K seats. The estimated number of 3 and 4-year-old children that are eligible to attend prekindergarten under the provisions of the Act is 1,742 children. To meet this need, FCPS will utilize available classroom space, high school-based classrooms, relocatable classrooms and attendance boundary adjustments where appropriate. In addition, additional pre-K classrooms will be added to the educational specifications for the construction of new elementary schools. FCPS will also explore a variety of other options for additional pre-K space in the coming years. Finally, FCPS will continue to encourage private providers to participate in this Program. However, to date, there is only one private provider in Frederick County who has been granted state seats through the Program.

Special Education:

Special Education has evolved over time. Today, special education students attend either their neighborhood school, a regional special education program or a specialized facility such as Rock Creek. To meet the changing special educational needs, FCPS offers a variety of programs ranging from occasional assistance to full time intensive programs, as described in [Appendix T](#). Schools have adapted to provide appropriate, flexible spaces to serve children with various physical, emotional and educational abilities. However, this often reduces space in schools for traditional classrooms.

Delta Program:

FCPS programming has been expanded at the elementary level to support students without an individualized education program in kindergarten through second grade who are not responding to current building level behavior interventions and are struggling to demonstrate age expected emotional regulation. The FCPS Delta program offers a small class size and more intensive instruction and support in behavioral, social and emotional skills acquisition. Students have opportunities to practice and apply these skills throughout. Staff includes a K-2 classroom teacher, a Behavior Support Specialist, and two instructional assistants. The goal of the program is to equip students with the skills needed to successfully integrate into their grade level classroom without adult support. In the 2022-2023 school year, FCPS operated five regional sites serving students from a total of 16 schools.

Community Schools Program

The Blueprint for Maryland's Future Act expanded the Community Schools program, which enables schools that receive Concentration of Poverty Grants to hire additional staff to provide wrap-around services to students and families to enhance students' ability to be successful. In addition to office space for the Community Coordinators and Nurses hired for the program, the staff host programs that require space during the school day. During the 2022-23 school year, FCPS had four Community Schools: Butterfly Ridge ES, Hillcrest ES, Lincoln ES and Waverley ES. Monocacy ES will become a Community School for the 2023-24 school year.

Remote Virtual Program

The Remote Virtual Program (RVP), formerly known as the Blended Virtual Program, is a high-quality remote learning experience for first through twelfth grade students. FCPS teachers, utilizing the FCPS curriculum, instruct students in a remote learning setting that includes regular, live synchronous and asynchronous learning opportunities. The continued implementation of this new program offers a personalized pathway to success for FCPS students. Additional details on the RVP are found in Appendix S. While the students attending the RVP are not physically housed in a building, teachers and staff for this program must be located within FCPS buildings. As of September 30, 2022, there were 564 students enrolled in the RVP program with 138 at the elementary level, 167 at the middle school level and 259 at the high school level. Enrollment for the 2022-23 school year was less than the 2021-22 school year enrollment of 1201 students.

Media Centers and STEM Education:

The role of media centers has adapted from a focus on printed books and magazines to include a variety of digital resources. Media centers help classroom learning and promote literacy, independent learning, and the responsible use of information and information technology. With an increasing emphasis on integration of Science, Technology, Engineering and Mathematics (STEM) in the FCPS curriculum, media centers have often provided a home for STEM labs or maker spaces to provide specialized equipment that all classes can use as needed.

Student Support Spaces:

FCPS provides a variety of spaces to support students outside of traditional classroom learning. Collaboration spaces provide opportunities for small groups of students to work independently. Specialist teachers are available to provide supplemental instruction to students struggling with reading or math. Guidance counselors, psychologists, social workers, and behavioral specialists address emotional and behavioral needs. Speech and language pathologists and occupational and physical therapists assist students with identified needs. Space is available for pull-out or full-time English Learners. Community Liaisons help parents support the learning of their children. In addition to direct assistance, students are also given opportunities to support their own mental health by using calming rooms when necessary.

In general, FCPS provides more space for support services in the prototype building designs than the IAC minimum Gross Area Baselines. For example, depending on the needs of the school community an elementary school may devote from 2,000 to 5,000 square feet to support services, even with each space being used for multiple purposes. In the design of new facilities, FCPS strives to provide flexibility in the use of the facility by co-locating multiple support services in classroom sized spaces.

Community Usage of School Facilities

Community use of FCPS facilities is part of the culture in Frederick County, supported by BOE policy. Below are some of the major organizations and programs using FCPS facilities:

- **Recreation:** There are currently 13 schools with Community Recreation Centers using gym and field space and an additional six schools are scheduled for outdoor parks and recreation programming. Joint use agreements are considered each time FCPS begins the design process for a school. As an example, the Brunswick ES replacement opening in the fall of 2023 will host a County parks and recreation program.
- **Judy Centers:** The goal of Judy Centers is to improve school success through early intervention and comprehensive services to families with children from birth to Kindergarten. Butterfly Ridge ES, Hillcrest ES, Lincoln ES, Monocacy ES and Waverley ES house Judy Centers.
- **School Based Health Clinic:** Hillcrest ES hosts a school-based health clinic, whose purpose is to offer medical care and treatment to all students enrolled in the school, and particularly those without health insurance.
- **Childcare:** To meet the needs of students and families before and after the school day, three local childcare providers have contracts to offer care at 32 elementary schools. However, due to a change in normal daycare needs in FY23 as a result of more parents teleworking, before and after school care was provided at only 26 school locations due to low daycare enrollment at the other six schools.

In addition to the partnerships above, non-profit organizations may apply to use FCPS indoor and outdoor facilities for minimal fees used to cover staff time for supervision and maintenance of the facilities. During the 2022-23 school year, a total of 363 groups reserved space at an FCPS location. Since the beginning of the COVID-19 pandemic the 2022-23 school year was the first with no restrictions for community use.

Table 3B: Community Use of Facilities Statistics, 2022-2023 School Year

	Indoor Space	Outdoor Space	Total
Number of locations	68	63	68
Number of event dates booked	44,307	25,231	69,538
Number of event hours booked	254,163.75	174,698.75	428,862.50