

MIDDLETOWN ELEMENTARY MIDDLETOWN MIDDLE CO-LOCATED SCHOOL PROJECT

SCHEMATIC DESIGN

March 27, 2024

CANNONDESIGN

PROJECT OVERVIEW

MIDDLETOWN ES/MS

- In the Town of Middletown
- Co-located Replacement School on Existing Site
- Site area approx. 73.91 acres
- SRC: ES-523 MS-839 Total-1362

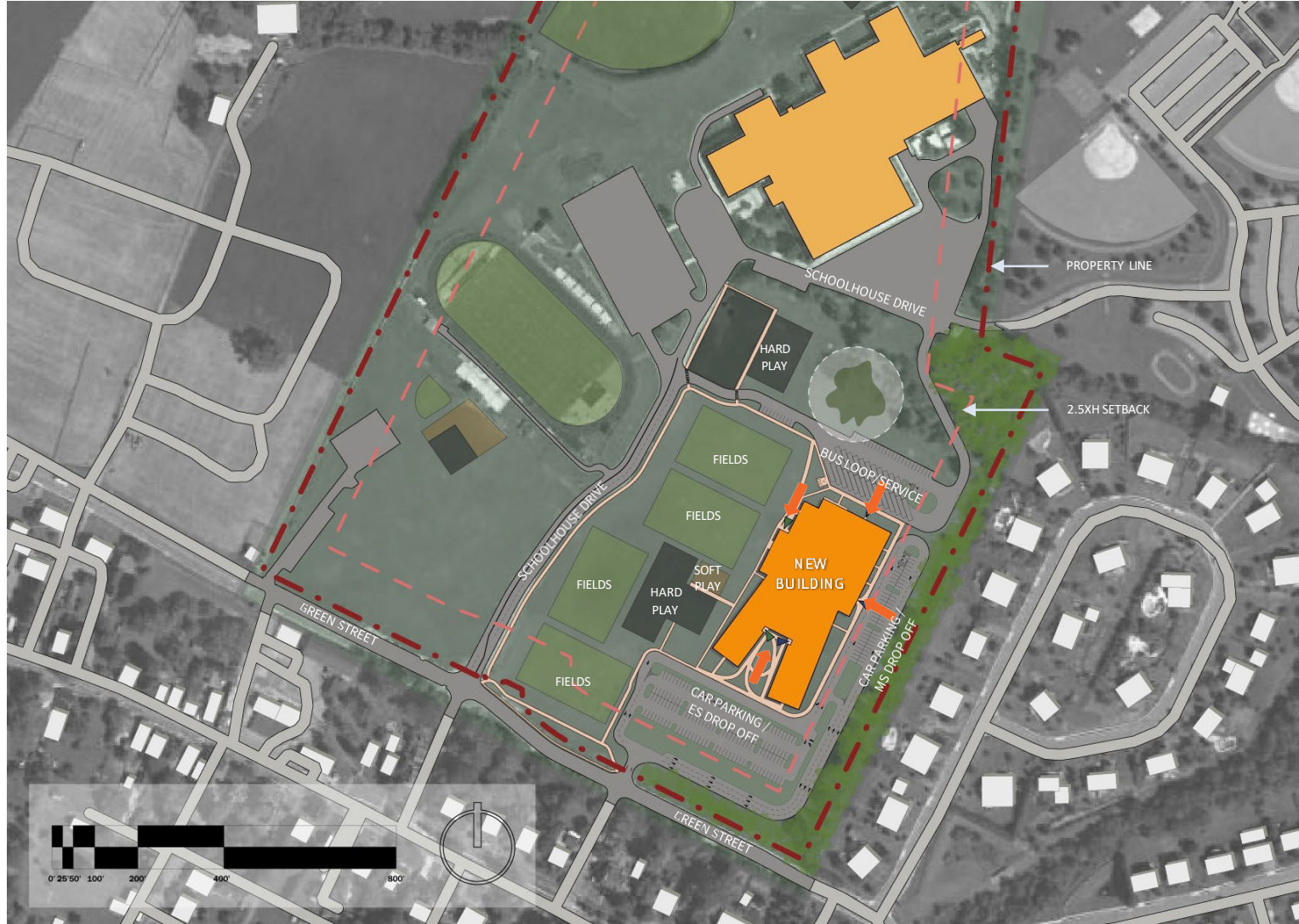


NOT TO SCALE

CANNONDESIGN

PROJECT SITE PLAN

MIDDLETOWN ES/MS

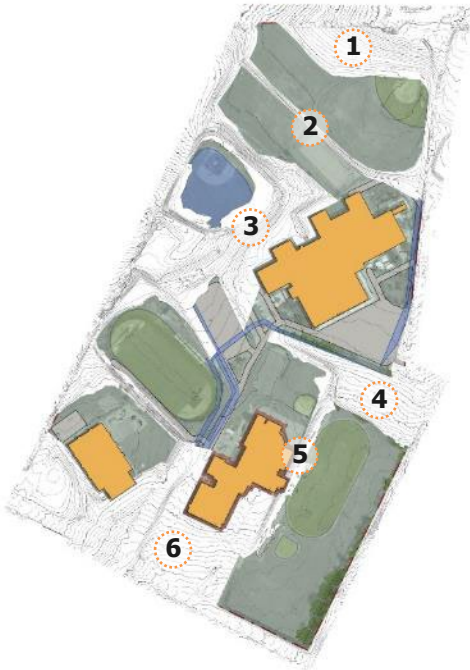


CANNONDESIGN

Site Location Elimination Process

Topography Challenges

- 1. 24' Topography Change
- 2. 08' Topography Change
- 3. 14' Topography Change
- 4. 17' Topography Change
- 5. 12' Topography Change
- 6. 14' Topography Change



Current Building and Road Operations:

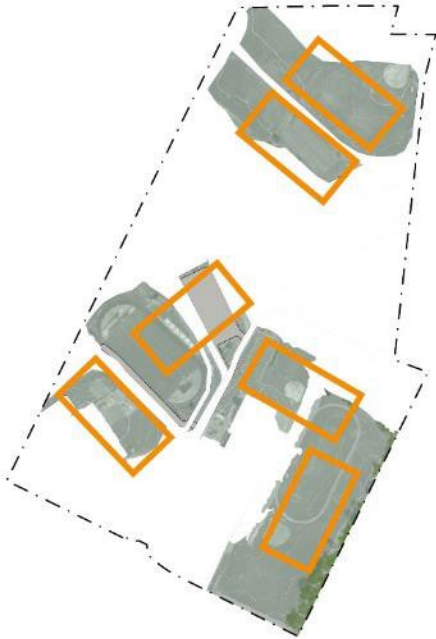
- 1. Existing High School Parking Lots/Drop Off
- 2. Existing Middle School Parking Lots/Drop Off
- 3. Existing Elementary School Parking Lots/Drop Off
- 4. ~20' Boundary from Existing Building
- 5. School House Drive
- 6. Existing Water line
- 7. Existing Gas line
- 8. Existing Stormwater Management System



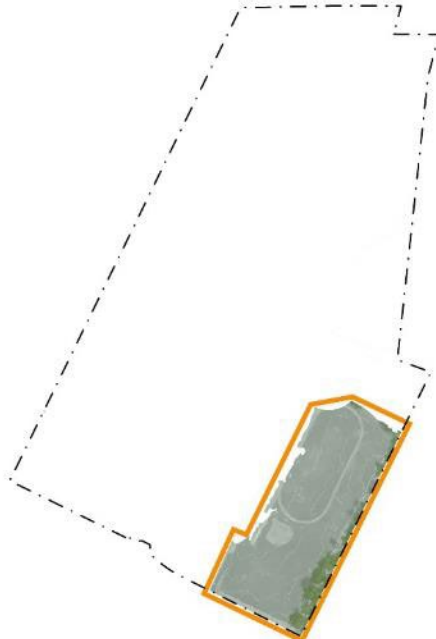
CANNONDESIGN

Site Location Elimination Process

Locations with significant constraints eliminated



Remaining site with optimal feasibility



CANNONDESIGN

Construction Phasing Phase 1a



CANNONDESIGN

Construction Phasing Phase 1b



CANNONDESIGN

Construction Phasing Phase 1c



CANNONDESIGN

Construction Phasing Completion












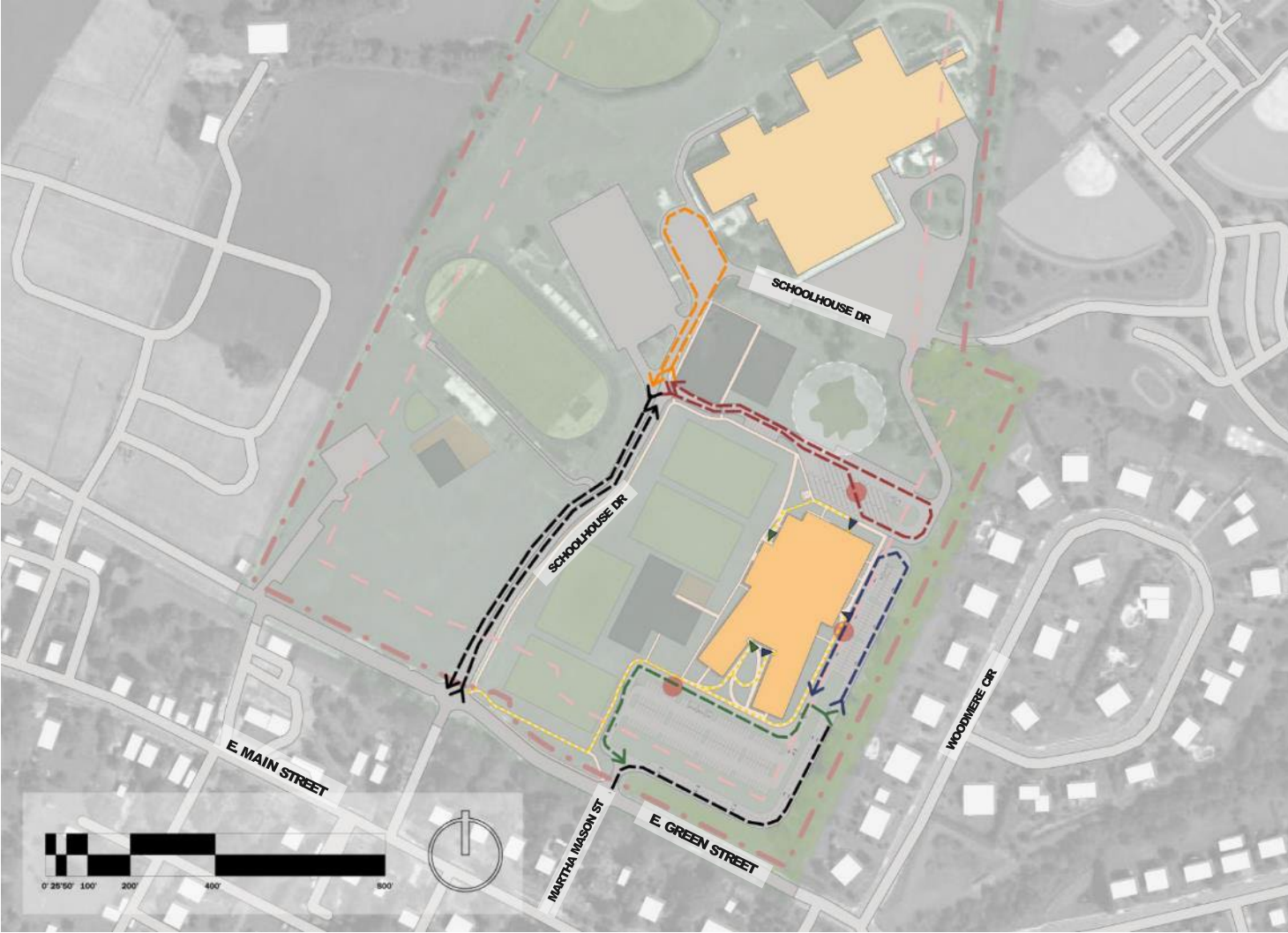
CANNONDESIGN

Traffic Patterns

SIGNIFICANT IMPROVEMENTS:

- Separate routes for car and bus traffic
- Separate Drop-offs for Middle School and Elementary School Traffic
- Designated Pedestrian Pathway

	MS/ES BUS
	ES CARS
	MS CARS
	HS CARS
	JOINT TRAFFIC
	PEDESTRIAN
	DROP OFF SPOT
	ES SCHOOL ENTRANCE
	MS SCHOOL ENTRANCE



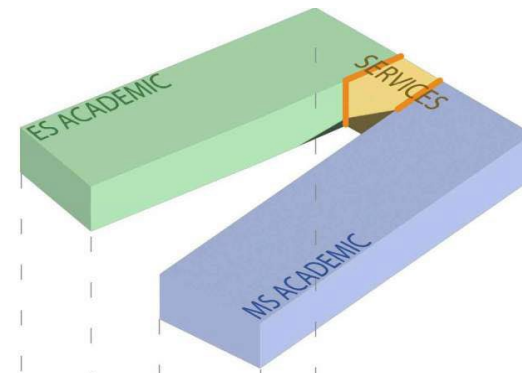
CANNONDESIGN

Relative Spatial Organization

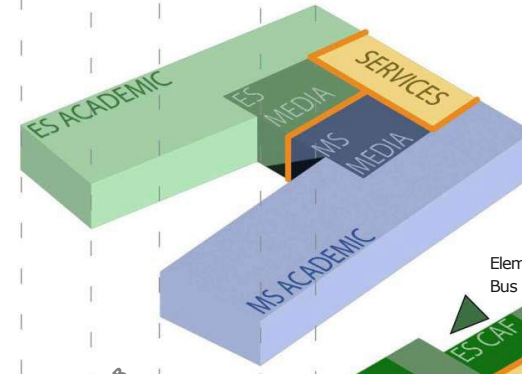
- Three-story Academic building; One-Story Public side
- Administrative core flanked by ES and MS Academic Wings
- ES in the NW side; MS in the SE side



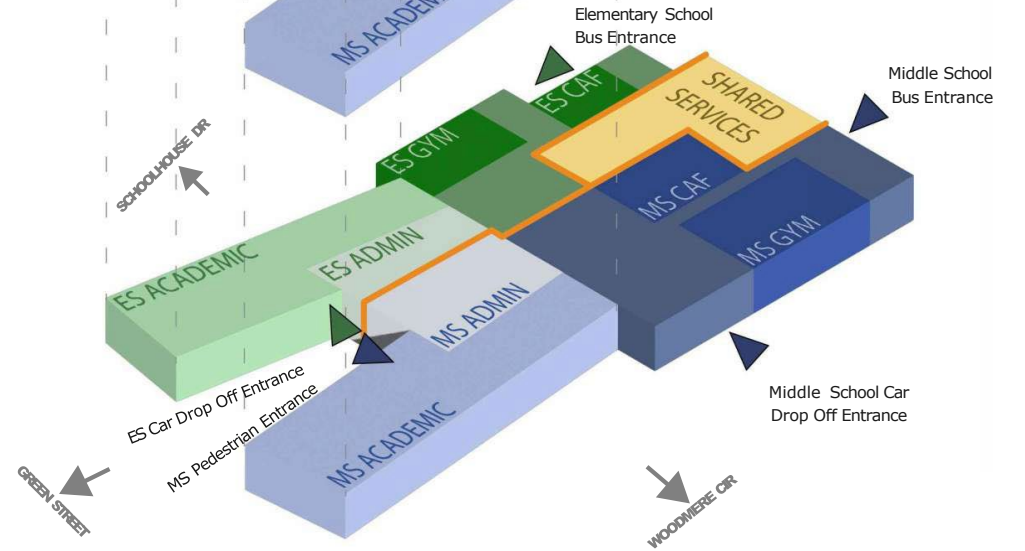
LEVEL 03



LEVEL 02



LEVEL 01



PROJECT FLOOR PLAN

MIDDLETOWN ES/MS



NOT TO SCALE

FLOOR PLAN – LEVEL 1

CANNONDESIGN



FREDERICK COUNTY PUBLIC SCHOOLS
MARYLAND

Every Child. Every Day.

PROJECT FLOOR PLAN

MIDDLETOWN ES/MS



NOT TO SCALE

FLOOR PLAN – LEVEL 2

CANNONDESIGN



FREDERICK COUNTY PUBLIC SCHOOLS
MARYLAND

Every Child. Every Day.

PROJECT FLOOR PLAN

MIDDLETOWN ES/MS



NOT TO SCALE

FLOOR PLAN – LEVEL 3

CANNONDESIGN



FREDERICK COUNTY PUBLIC SCHOOLS
MARYLAND

Every Child. Every Day.



EAST STREET VIEW – WOODMERE CIRCLE 3&4

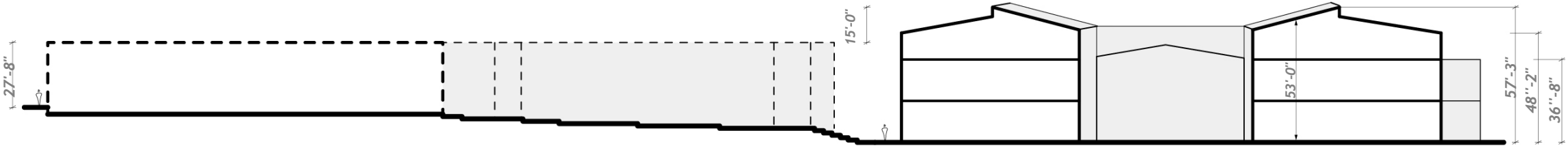
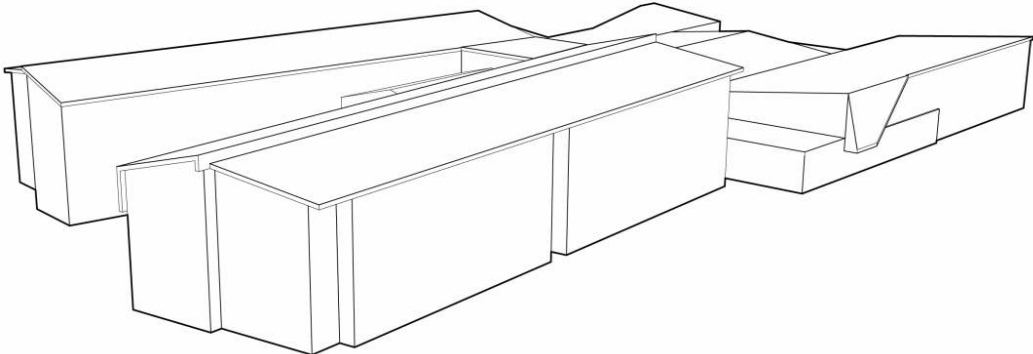
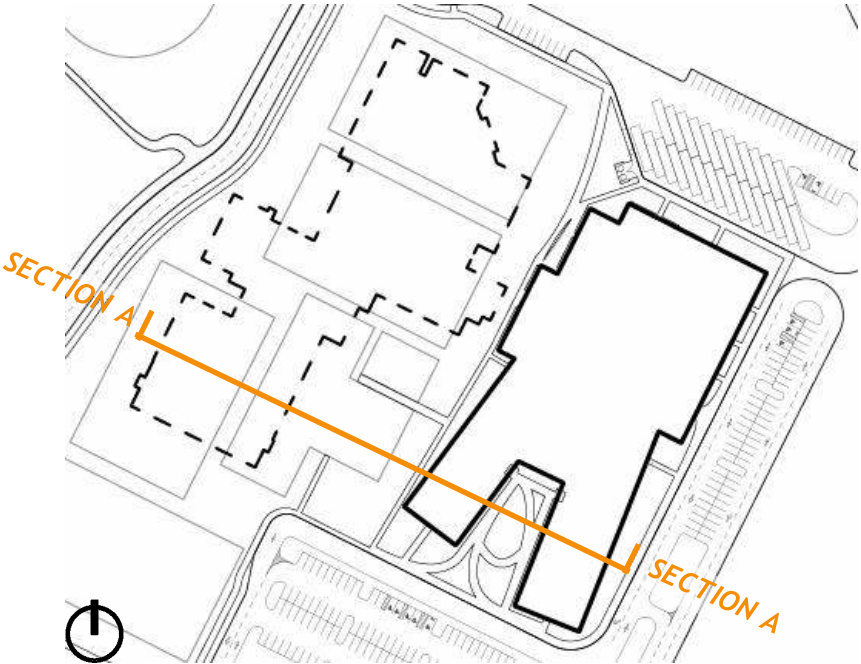
CANNONDESIGN



EAST STREET VIEW – WOODMERE CIRCLE 3&4

CANNONDESIGN

Building Massing & Height Comparison



SECTION A NTS

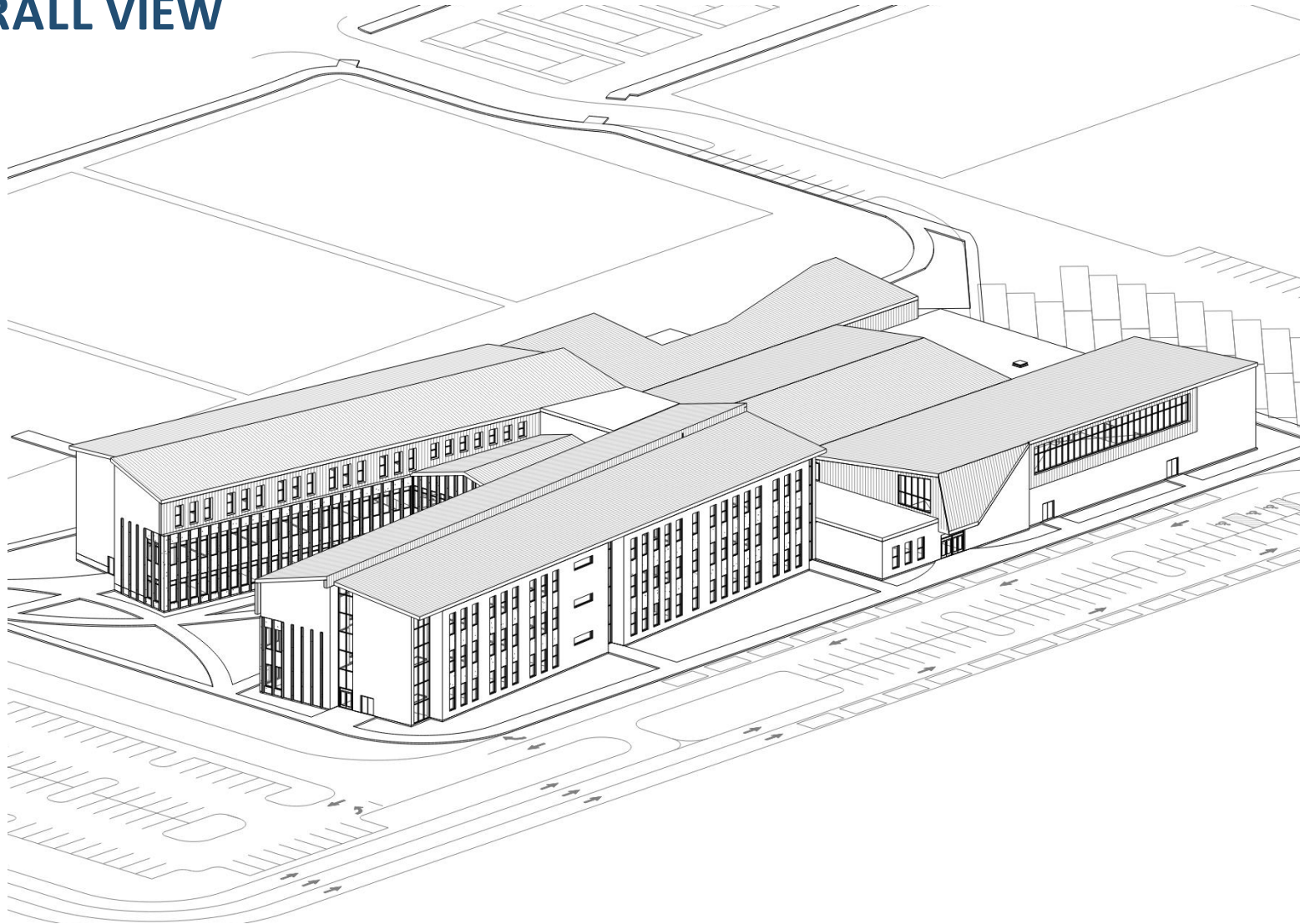
EXISTING MIDDLETOWN MIDDLE SCHOOL BUILDING

PRELIMINARY CO-LOCATED MIDDLETOWN ELEMENTARY/ MIDDLE SCHOOL DESIGN

CANNONDESIGN

PROJECT OVERALL VIEW

MIDDLETOWN ES/MS



AERIAL VIEW - SOUTHEAST

CANNONDESIGN

PROJECT SCHEDULE

MIDDLETOWN ES/MS

PHASE	DURATION
Design Development	April 2024 – September 2024
Construction Documents	October 2024 – February 2025
Issued for Bid	March 2025
Contracts/Construction Phase 1	July 2025-July 2027
Student Occupancy	August 2027
Construction Phase 2 (Demolish old school)	July 2027-December 2028

CANNONDESIGN



Questions and Discussion by the Board of Education