



COMMUNITY ENGAGEMENT MEETING

Frederick County
Public Schools

Middletown Elementary/Middle
School Replacement

10/24/2023

CANNONDESIGN

EXISTING SITE CONDITIONS

EXISTING STADIUM

EXISTING ELEMENTARY SCHOOL

EXISTING HIGH SCHOOL

EXISTING MIDDLE SCHOOL



NEW ES/MS SITE LOCATION FACTORS, CONSTRAINTS AND INFLUENCES

- HS traffic backup and existing roads
- Existing Champion tree
- Existing landscape topography
- Existing water main
- Existing community and desired buffer
- Operation of Existing MS during Construction

EXISTING WATER MAIN

EXISTING MIDDLE SCHOOL










EXISTING HIGH SCHOOL TRAFFIC AND PARKING

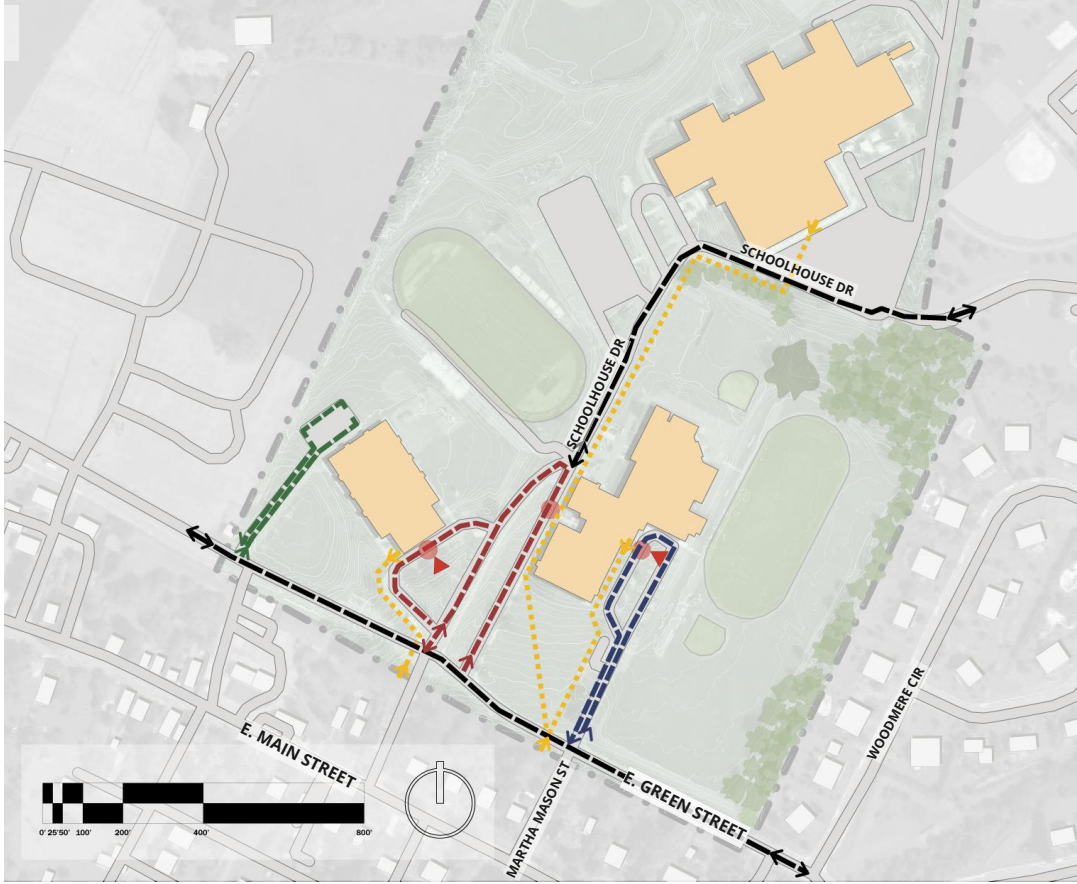
EXISTING CHAMPION TREE & ROOT ZONE

EXISTING TOPOGRAPHY

EXISTING ADJACENT COMMUNITY

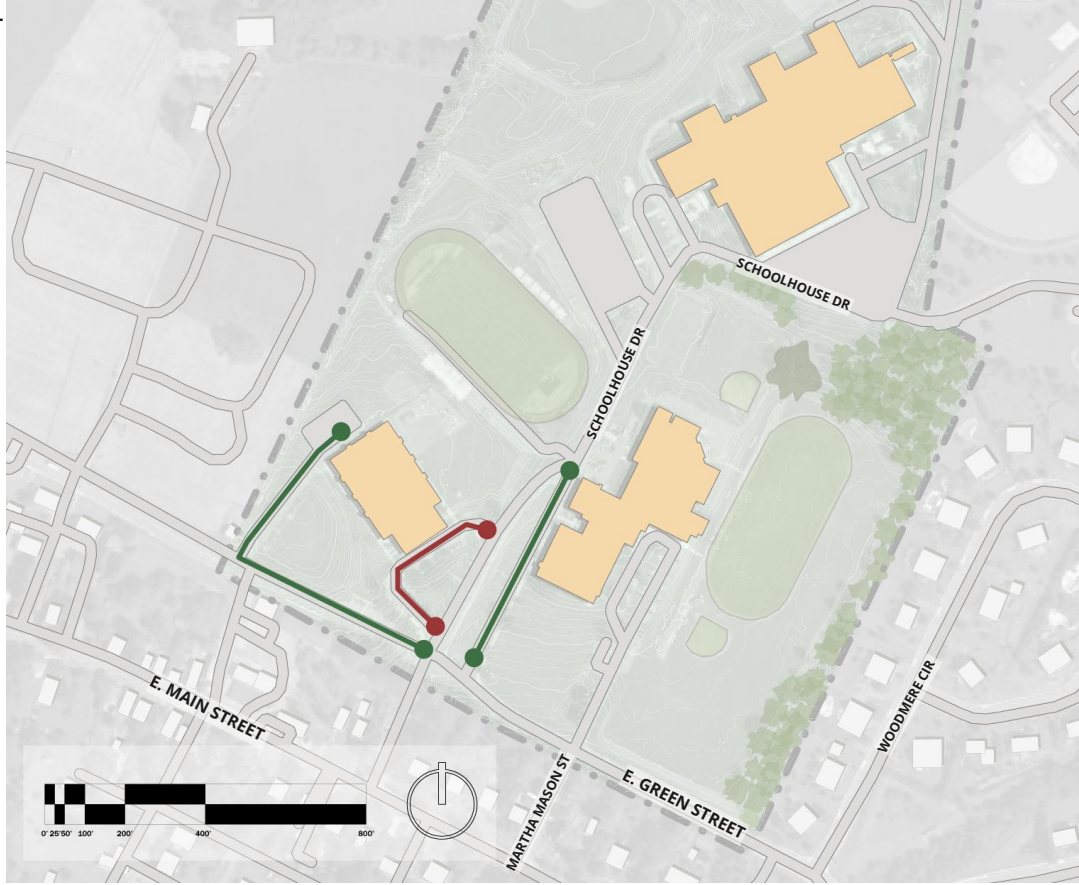
EXISTING SITE TRAFFIC PATTERNS

-  BUS
-  ES CARS
-  MS CARS
-  JOINT TRAFFIC BACKUP
-  PEDESTRIAN
-  DROP OFF SPOT
-  SCHOOL ENTRANCE



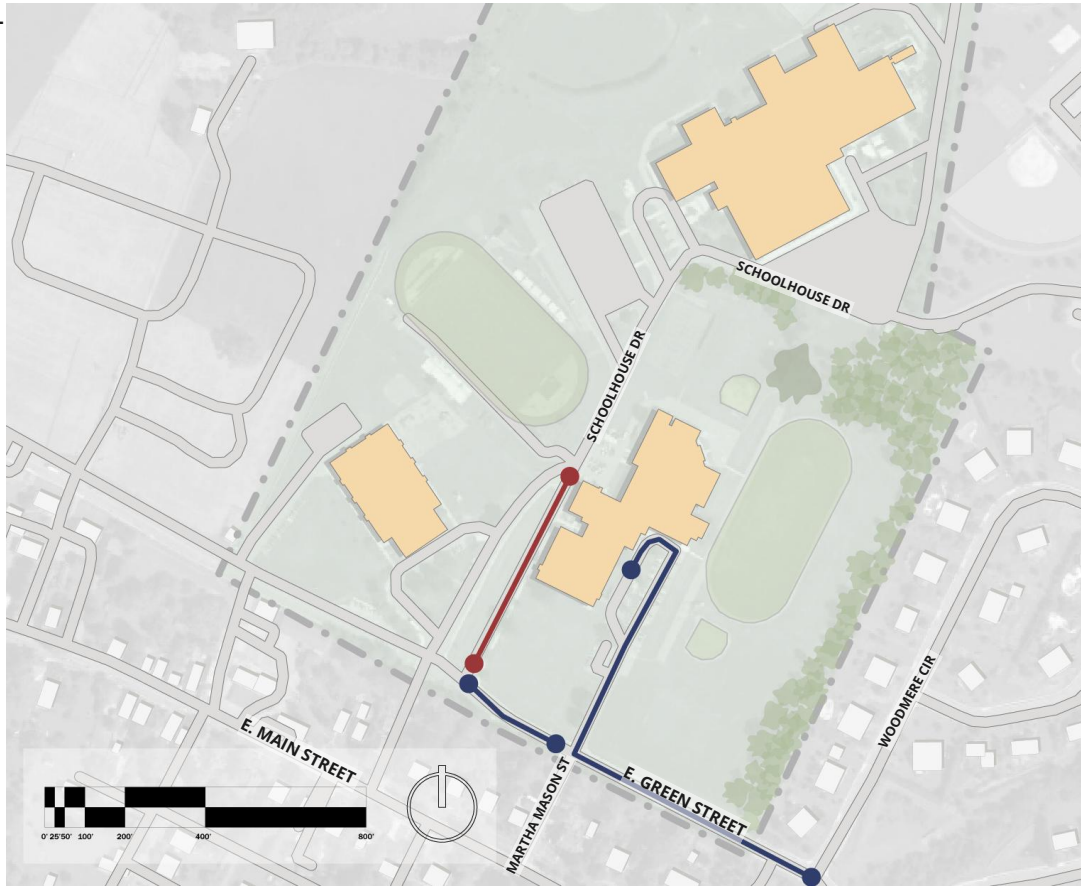
EXISTING SITE STACKING - ELEMENTARY SCHOOL

-  BUS
-  ES CARS



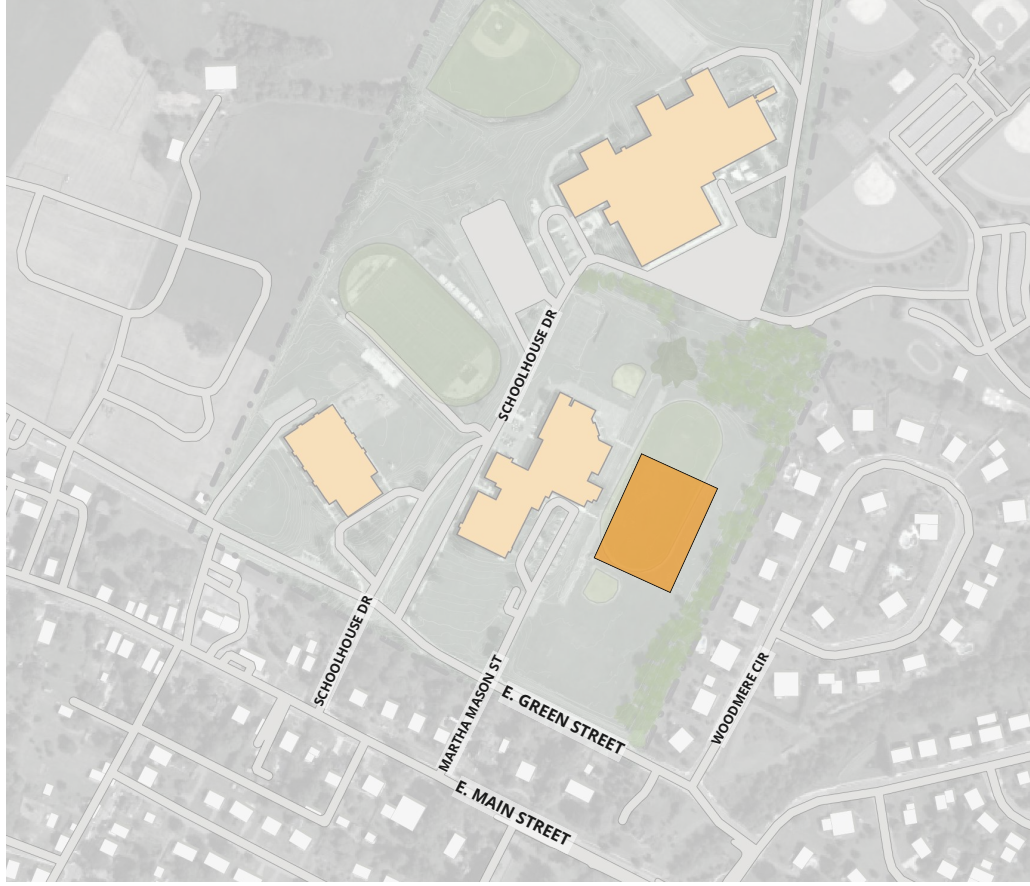
EXISTING SITE STACKING - MIDDLE SCHOOL

-  BUS
-  MS CARS



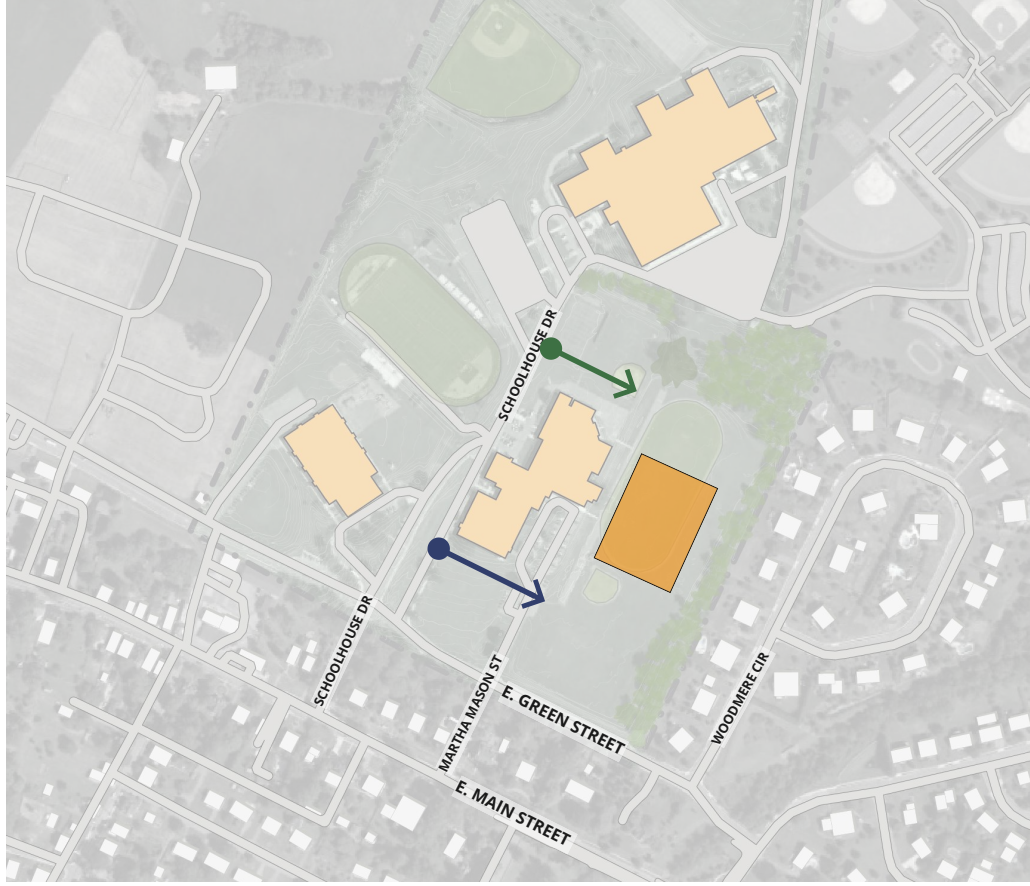
DESIGN STEP 1:

- Locate new school to provide access from multiple sides



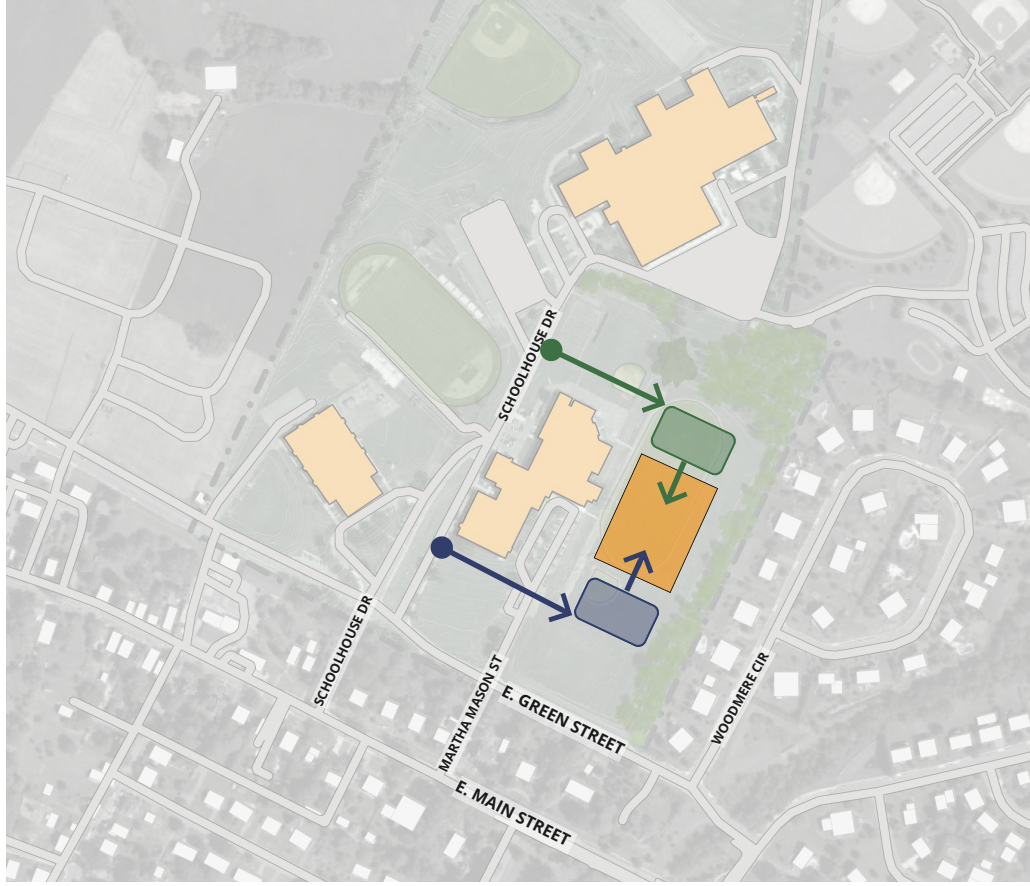
DESIGN STEP 2:

- Locate new school to provide access from multiple sides
- Traffic from Green Street
- Separate ES & MS private vehicle traffic



DESIGN STEP 3:

- Locate new school to provide access from multiple sides
- Traffic from Green Street
- Separate ES & MS private vehicle traffic
- Create drop off and front door for each school



DESIGN STEP 4:

- Locate new school to provide access from multiple sides
- Traffic from Green Street
- Separate ES & MS private vehicle traffic
- Create drop off and front door for each school
- Create separate bus path and drop off

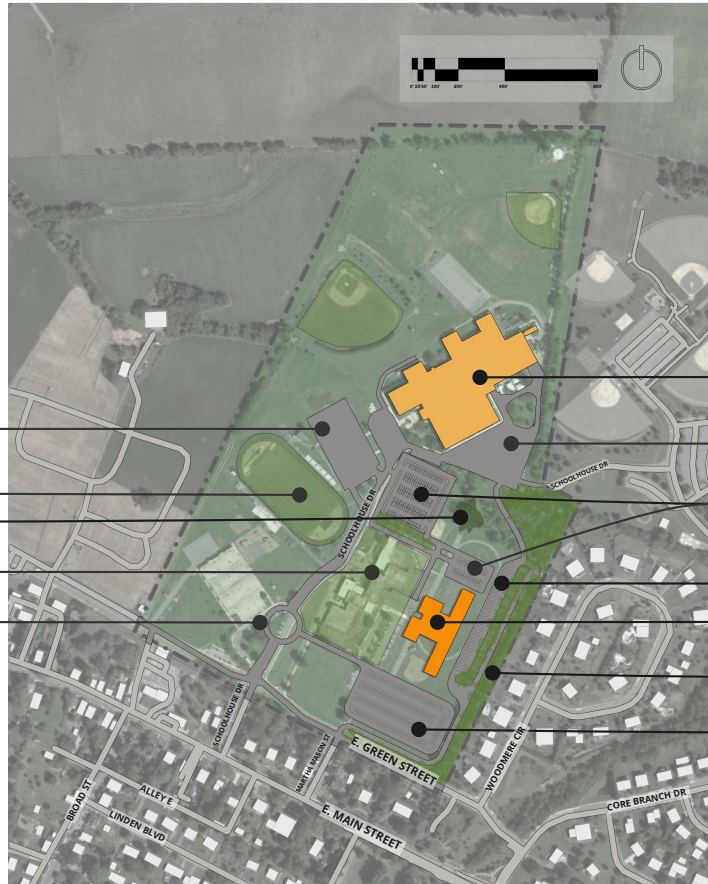


DESIGN STEP 5:

- Locate new school to provide access from multiple sides
- Traffic from Green Street
- Separate ES & MS private vehicle traffic
- Create drop off and front door for each school
- Create separate bus path and drop off
- Create open space for outdoor play



COMPLETION OF PHASE 1 (ES/MS)



EXISTING HS PARKING LOTS

EXISTING STADIUM

COUNTY CHAMPION TREE TO REMAIN

NEW ES/MS PLAY FIELDS

NEW ROUNDABOUT

EXISTING HIGH SCHOOL

EXISTING HS PARKING LOTS

NEW ES PARKING LOT [128 +24 = 152 SPOTS]

NEW COMBINED ES/MS BUS LOT /DROP OFF [25 SPOTS]

NEW ES/MS

ENHANCED NATURAL BUFFER BETWEEN SCHOOL AND COMMUNITY

NEW MS PARKING LOT [232 SPOTS]

PHASE 1a

- CONSTRUCTION OF (ES/MS)
- NEW PARTIAL MS PARKING LOT
- NEW ES PARKING LOT
- NEW BUS DROP-OFF

EXISTING HS PARKING LOT

EXISTING STADIUM

EXISTING ES PARKING/DROP OFF

EXISTING ELEMENTARY SCHOOL

EXISTING ES BUS STAGING

EXISTING MS BUS STAGING

EXISTING MS PARKING/DROP OFF

EXISTING HIGH SCHOOL

EXISTING HS PARKING LOT

COUNTY CHAMPION TREE TO REMAIN

NEW ES PARKING LOT

NEW ES PARKING LOT/DROP OFF

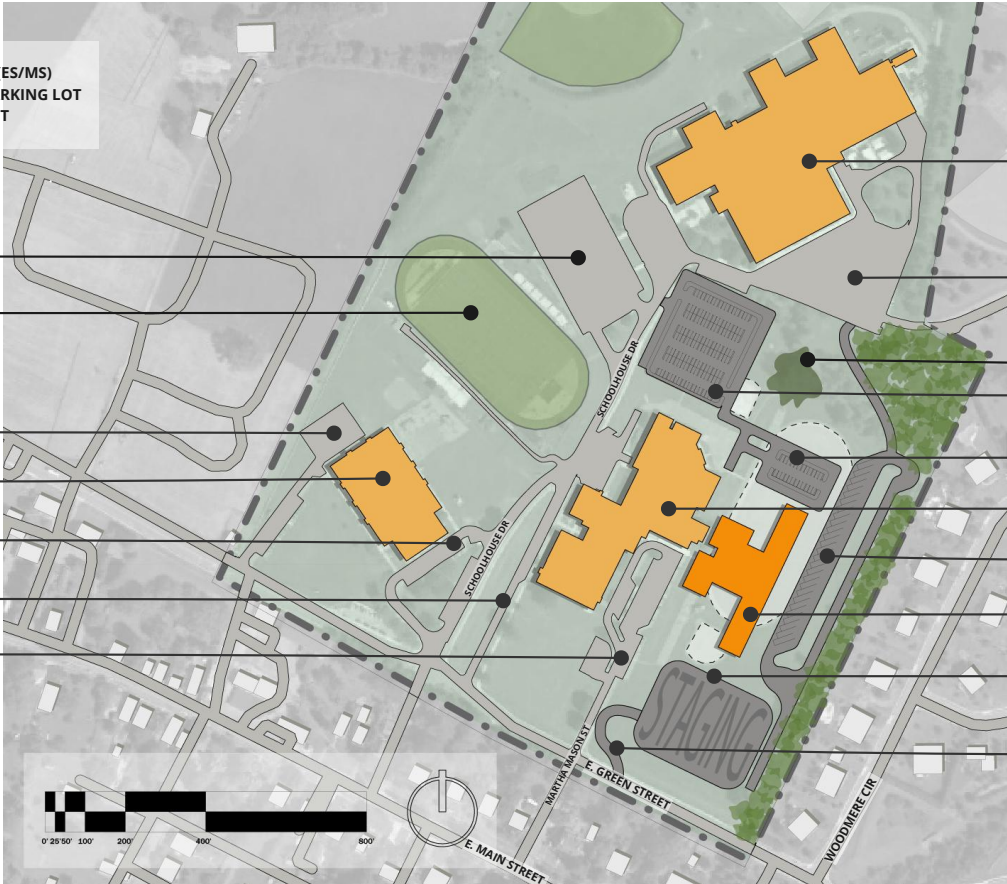
EXISTING MIDDLE SCHOOL

NEW ES/MS JOINT BUS STAGING

NEW ES/MS

TEMPORARY CONSTRUCTION STAGING / TRAILERS

TEMPORARY CONSTRUCTION ROAD



PHASE 1b (SUMMER BREAK)

- DEMOLITION OF EXISTING (ES/MS)
- DEMOLITION OF EXISTING PARKING LOTS
- DEMOLITION OF PARTIAL SCHOOLHOUSE DR. AND CONSTRUCTION OF NEW ROUNDABOUT
- CONNECTION OF NEW ROADS TO NEW PARKING LOTS

DEMO ES
PARKING/DROP OFF

DEMO EXISTING
ELEMENTARY SCHOOL
TEMPORARY
CONSTRUCTION
STAGING / TRAILERS

SCHOOLHOUSE DR.
RECONFIGURATION
AND NEW
ROUNDABOUT

COMPLETE MS
PARKING LOT



DEMO EXISTING
MIDDLE SCHOOL

NEW ES/MS

DEMO EXISTING MS
PARKING/DROP OFF

CONNECT NEW ROAD
TO MARTHA MASON ST

PHASE 1c

- CONSTRUCTION OF NEW GREEN FIELD
- LANDSCAPING










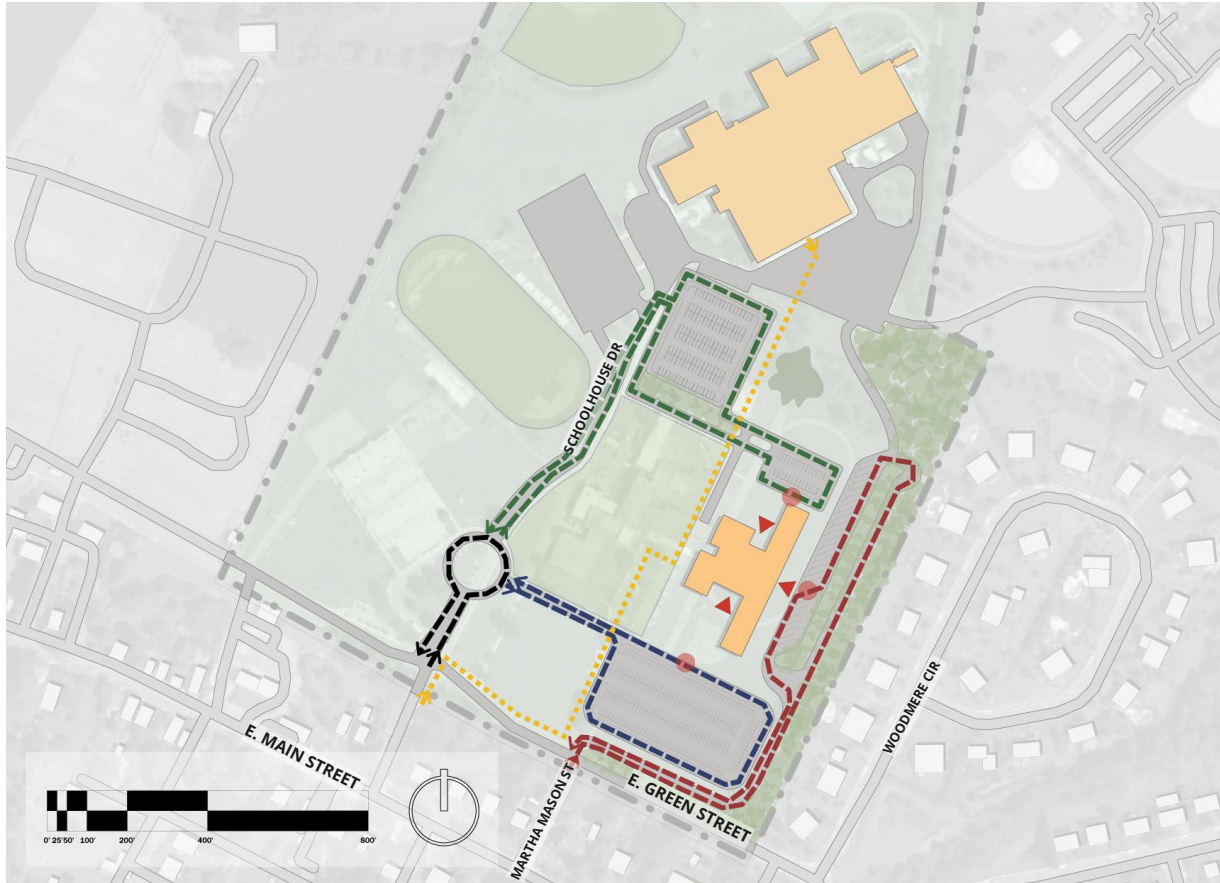
NEW GREEN FIELD

ENHANCED NATURAL
BUFFER BETWEEN
SCHOOL AND
COMMUNITY

IMPROVED TRAFFIC PATTERN ITEMS:

- Separate routes for car and bus traffic
- Schoolhouse Dr expansion
- Traffic Circle at SH Dr MS Parking Intersection [research in development]
- Designated Pedestrian Pathway

-  BUS
-  ES CARS
-  MS CARS
-  JOINT TRAFFIC
-  PEDESTRIAN
-  DROP OFF SPOT
-  SCHOOL ENTRANCE



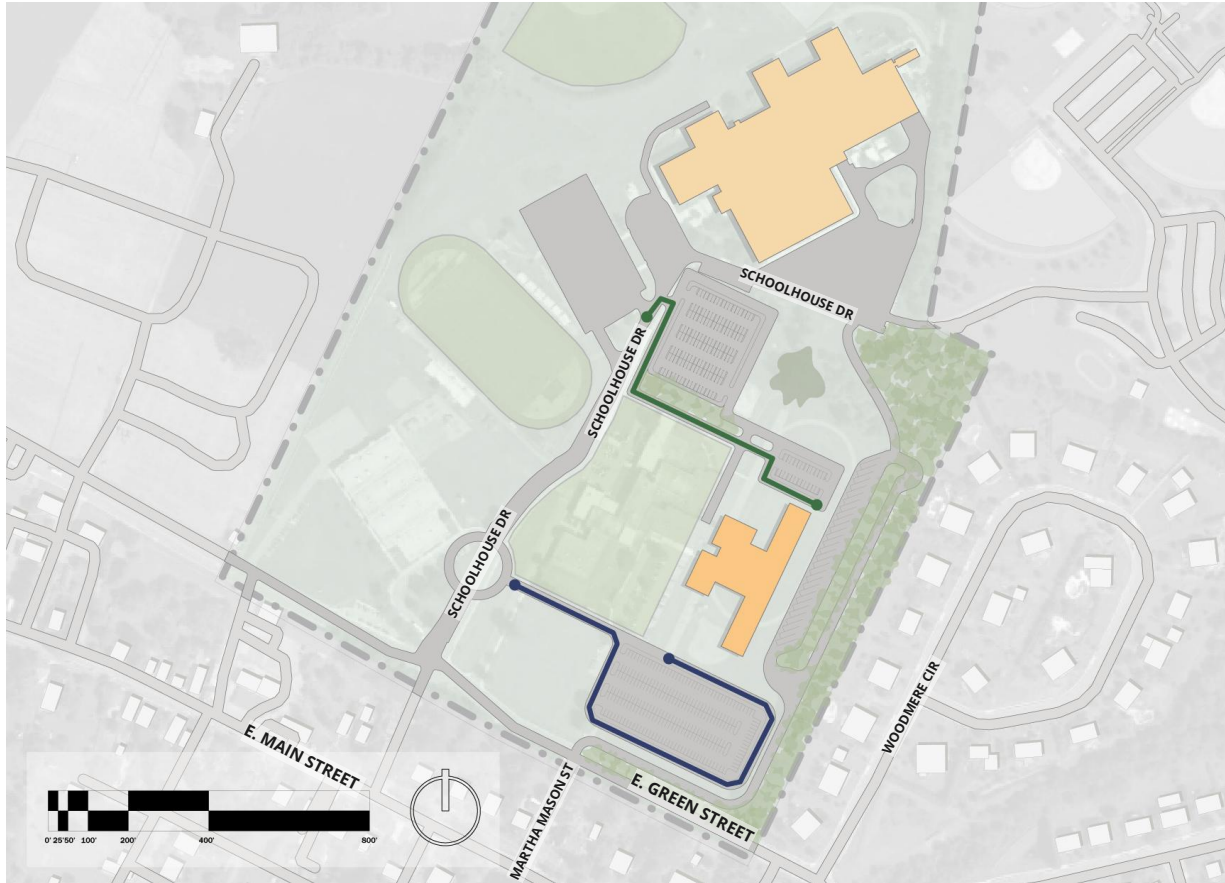
**IMPROVED STACKING
PATTERN ITEMS:**

- Separate MS and ES routes
- Complete retraction of stacking off of Green Street
- No bus interference

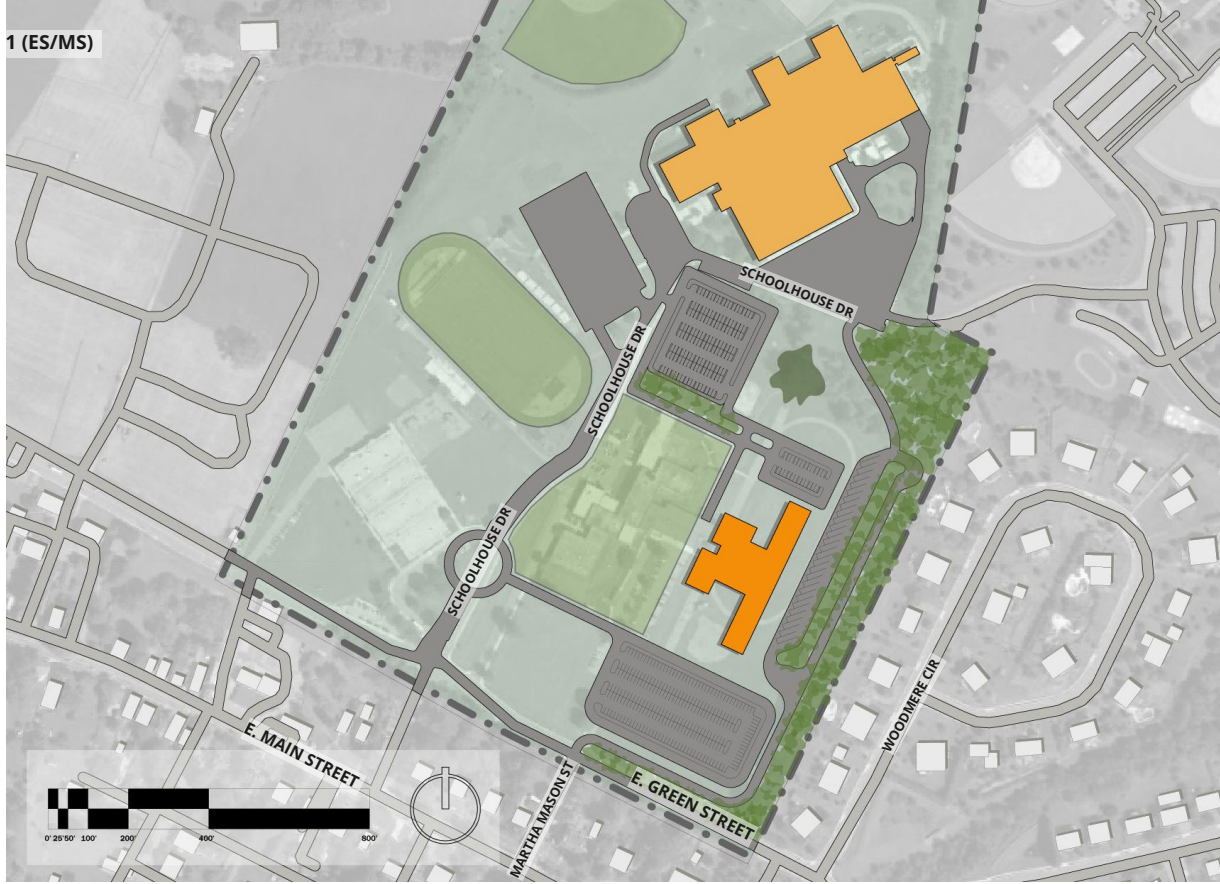
ES
Route 950' = 43 cars

MS
Route 1490' = 67 cars

JOINT
STACKING



COMPLETION OF PHASE 1 (ES/MS)



COMPLETION OF PHASE 1 (ES/MS)

