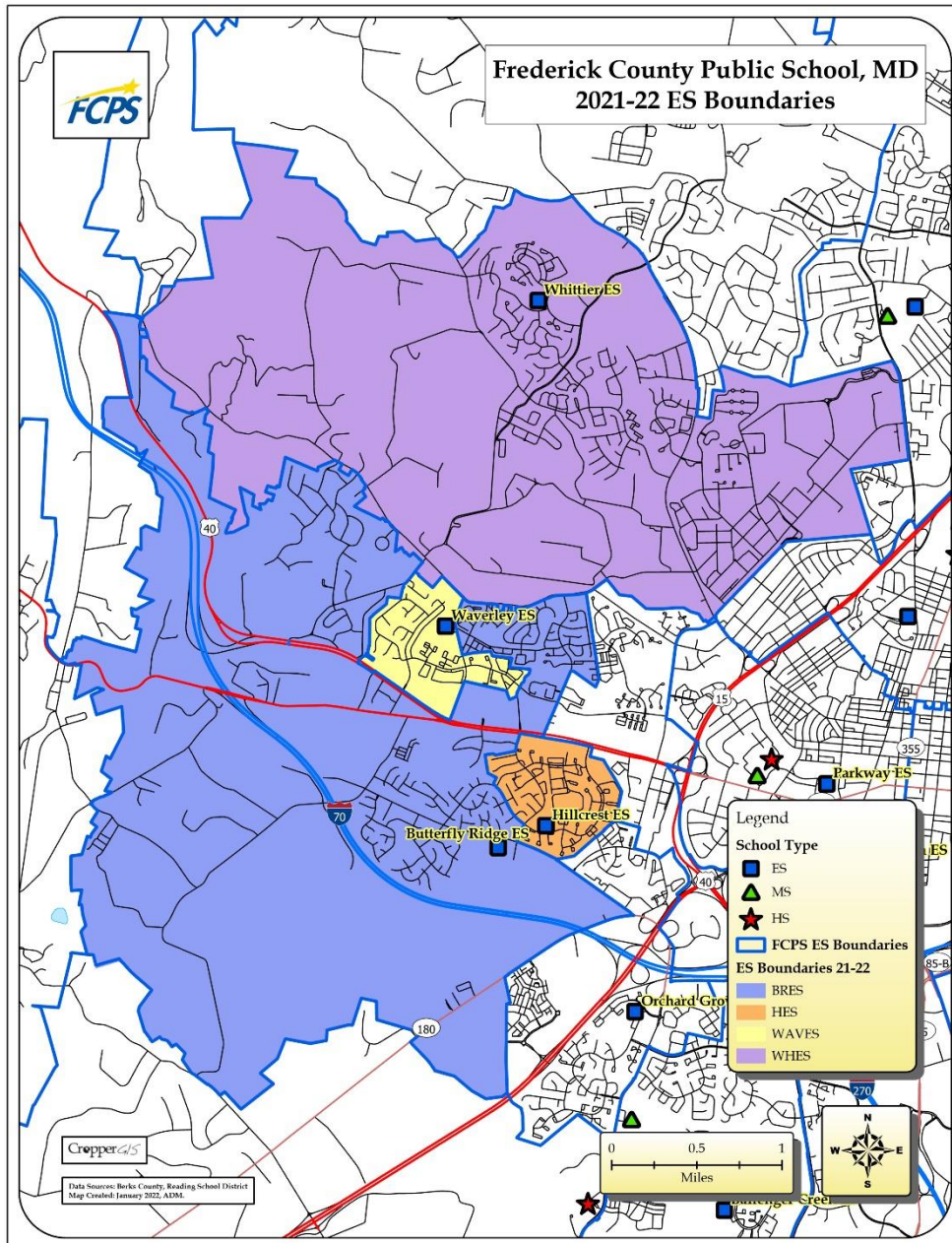




CropperGIS

Frederick County Public Schools Waverley ES Redistricting Superintendent's Recommendation Statistics and Maps

Revised: 01/19/2022



Enrollment Statistics Assumptions

The following document contains a series of tables and maps that depict statistics for current schools and boundaries, as well as the Superintendent's Recommendation. This information will help inform all stakeholders on how schools could be potentially impacted as a result of proposed redistricting adjustments, along with a comparison to current school information

When estimating enrollment for this recommendation, a series of assumptions were made. These assumptions help to ensure that special programs are not compromised by any redistricting adjustment, and that actual enrollments will materialize as close to the estimates as possible. The following assumptions were made:

1. Student counts are based on the 09/30/2021 FCPS student database.
2. Any student living within a school boundary will attend the school for their grade.
3. 73 3- and 4-year-old Special Education Pre-K students move from Hillcrest Elementary to Butterfly Ridge Elementary
4. Enrollment projections utilize historic grade succession rates by cohort and by school

2021-22 Elementary School Enrollment, and Utilization Statistics

| Elementary School | Grade Config | New SRC | PK | K | 1 | 2 | 3 | 4 | 5 | 2021-22 Total Enrollment | 2021-22 Equated Enrollment | Equated Enrollment Utilization |
|--------------------|--------------|--------------|------------|------------|------------|------------|------------|------------|------------|--------------------------|----------------------------|--------------------------------|
| Butterfly Ridge ES | PK-5th | 766 | 75 | 103 | 108 | 95 | 104 | 90 | 111 | 686 | 668 | 91% |
| Hillcrest ES | PK-5th | 537 | 138 | 124 | 116 | 87 | 94 | 126 | 82 | 767 | 718 | 134% |
| Waverley ES | PK-5th | 1019 | 76 | 89 | 85 | 73 | 68 | 77 | 76 | 544 | 516 | 145% |
| Whittier ES | PK-5th | 626 | 88 | 106 | 101 | 118 | 98 | 110 | 109 | 730 | 714 | 114% |
| Total | | 2,948 | 377 | 422 | 410 | 373 | 364 | 403 | 378 | 2,727 | 2,616 | 116% |

**Superintendents Recommended Redistricting
 2021-22 Study Area Estimated Enrollment**

| Elementary School | Grade Config | New SRC | PK | K | 1 | 2 | 3 | 4 | 5 | Equated Total | Estimated Equated Enrollment Utilization | Proposed Total Students Moved Out | Proposed Total Students Moved In |
|--------------------|--------------|--------------|------------|------------|------------|------------|------------|------------|------------|---------------|--|-----------------------------------|----------------------------------|
| Butterfly Ridge ES | PK-5th | 766 | 71 | 78 | 88 | 76 | 78 | 79 | 70 | 540 | 70% | 338 | 198 |
| Hillcrest ES | PK-5th | 537 | 65 | 110 | 96 | 81 | 80 | 108 | 71 | 611 | 114% | 198 | 0 |
| Waverley ES | PK-5th | 1019 | 48 | 150 | 146 | 136 | 133 | 136 | 155 | 904 | 89% | 0 | 358 |
| Whittier ES | PK-5th | 626 | 54 | 110 | 109 | 118 | 104 | 116 | 118 | 729 | 116% | 20 | 0 |
| Total | | 2,948 | 238 | 448 | 439 | 411 | 395 | 439 | 414 | 2,784 | 94% | 556 | 556 |

*Total calculated assuming all live-in students attend their assigned school.

Recommendation Elementary School FARM Statistics

| Elementary School | Grade Config | FARM | |
|--------------------|--------------|------------------------------|--|
| | | 2021-22 Enrollment | Superintendent's Recommendation |
| Butterfly Ridge ES | PK-5th | FARM Enrollment Percent: 63% | FARM Estimated Enrollment Percent: 61% |
| Hillcrest ES | PK-5th | 91% | 89% |
| Waverley ES | PK-5th | 84% | 79% |
| Whittier ES | PK-5th | 36% | 36% |
| Total | | 67% | 66% |

Elementary School Recommendation Impacts

The cells colored in green reflect live-in students who are not moved, and the cells colored in tan show the number of live-in students that are moved, where they are currently zoned, and where they will be zoned per the concept. The first table shows a sum of all students impacted per the concept.

| Student Impact Estimates | | |
|------------------------------------|---------------------------------------|---|
| Recommendation | Total K-5th Live-In Students Impacted | Percent K-5th Live-In Students Impacted |
| ES Superintendent's Recommendation | 483 | 20.3% |

| ES Zone 2020-21 | ES Superintendent's Recommendation | Total K-5th Live-In Students |
|--------------------|------------------------------------|------------------------------|
| Butterfly Ridge ES | Butterfly Ridge ES | 286 |
| Butterfly Ridge ES | Waverley ES | 338 |
| Hillcrest ES | Butterfly Ridge ES | 125 |
| Hillcrest ES | Hillcrest ES | 527 |
| Waverley ES | Waverley ES | 479 |
| Whittier ES | Waverley ES | 20 |
| Whittier ES | Whittier ES | 600 |

Elementary School Feeder Patterns

| Feeder Patterns | | |
|------------------------------------|--------------------------|----------------------|
| Zones | Elementary School Splits | Splits Less than 25% |
| 2020-21 ES Zones | 1 | 0 |
| Superintendent's Recommendation ES | 0 | 0 |

| 2020-21 ES Zone | 2020-21 MS Zone | Total K-5th Live-In | ES Attendance |
|--------------------|-------------------|---------------------|---------------|
| Butterfly Ridge ES | Crestwood MS | 276 | 44% |
| Butterfly Ridge ES | Monocacy MS | 347 | 56% |
| Hillcrest ES | West Frederick MS | 652 | 100% |
| Waverley ES | Monocacy MS | 479 | 100% |
| Whittier ES | West Frederick MS | 621 | 100% |

| Superintendent's Recommendation ES Zone | Superintendent's Recommendation MS Zone | Total K-5th Live-In | ES Attendance |
|---|---|---------------------|---------------|
| Butterfly Ridge ES | Crestwood MS | 411 | 100% |
| Hillcrest ES | West Frederick MS | 527 | 100% |
| Waverley ES | Monocacy MS | 837 | 100% |
| Whittier ES | West Frederick MS | 600 | 100% |

2021-22 Middle School Enrollment, and Utilization Statistics

| Middle School | Grade Config | 2021-22 SRC | 6 | 7 | 8 | 2021-22 Total Enrollment | Enrollment Utilization |
|-------------------|--------------|--------------|------------|------------|------------|--------------------------|------------------------|
| Crestwood MS | 6-8th | 850 | 233 | 211 | 226 | 670 | 79% |
| Monocacy MS | 6-8th | 914 | 303 | 316 | 335 | 954 | 104% |
| West Frederick MS | 6-8th | 1049 | 276 | 281 | 334 | 891 | 85% |
| Total | | 2,813 | 812 | 808 | 895 | 2,515 | 89% |

| Middle School | Grade Config | 2021-22 SRC | Superintendent's Recommendation Estimated Enrollment | | | | Estimated Enrollment Utilization | Proposed Total Students Moved Out | Proposed Total Students Moved In |
|-------------------|--------------|--------------|---|------------|------------|--------------|----------------------------------|-----------------------------------|----------------------------------|
| | | | 6 | 7 | 8 | Total* | | | |
| Crestwood MS | 6-8th | 850 | 276 | 256 | 277 | 809 | 95% | 0 | 71 |
| Monocacy MS | 6-8th | 914 | 340 | 344 | 384 | 1068 | 117% | 10 | 13 |
| West Frederick MS | 6-8th | 1049 | 281 | 285 | 329 | 895 | 85% | 74 | 0 |
| Total | | 2,813 | 897 | 885 | 990 | 2,772 | 99% | 84 | 84 |

*Total calculated assuming all live-in students attend their assigned school.

Recommendation Middle School FARM Statistics

| Middle School | FARM | |
|-------------------|-------------------------|-----------------------------------|
| | 2021-22 Enrollment | Superintendent's Recommendation |
| | FARM Enrollment Percent | FARM Estimated Enrollment Percent |
| Crestwood MS | 53% | 55% |
| Monocacy MS | 56% | 53% |
| West Frederick MS | 60% | 57% |
| Total | 56% | 55% |

Middle School Recommendation Impacts

The cells colored in green reflect live-in students who are not moved, and the cells colored in tan show the number of live-in students that are moved, where they are currently zoned, and where they will be zoned per the concept. The first table shows a sum of all students impacted per the concept.

| Student Impact Estimates | | |
|------------------------------------|---------------------------------------|---|
| Recommendation | Total 6-8th Live-In Students Impacted | Percent 6-8th Live-In Students Impacted |
| MS Superintendent's Recommendation | 84 | 6.9% |

| MS Zone 2020-21 | MS Superintendent's Recommendation | Total 2021-22 Live-In Students |
|-------------------|------------------------------------|--------------------------------|
| Crestwood MS | Crestwood MS | 126 |
| Monocacy MS | Crestwood MS | 10 |
| Monocacy MS | Monocacy MS | 439 |
| West Frederick MS | Crestwood MS | 61 |
| West Frederick MS | Monocacy MS | 13 |
| West Frederick MS | West Frederick MS | 561 |

Middle School Feeder Patterns

| Study Area Feeder Patterns | | |
|------------------------------------|----------------------|----------------------|
| Zones | Middle School Splits | Splits Less than 25% |
| 2020-21 MS Zones | 0 | 0 |
| MS Superintendent's Recommendation | 0 | 0 |

| 2020-21 MS Zone | 2020-21 HS Zone | Total 6-8th Live-In | MS Attendance |
|-------------------|-----------------|---------------------|---------------|
| Crestwood MS | Frederick HS | 126 | 100% |
| Monocacy MS | Gov. T.J. HS | 449 | 100% |
| West Frederick MS | Frederick HS | 635 | 100% |

| Superintendent's Recommendation MS Zone | Superintendent's Recommendation HS Zone | Total 6-8th Live-In | MS Attendance |
|---|---|---------------------|---------------|
| Crestwood MS | Frederick HS | 197 | 100% |
| Monocacy MS | Gov. T.J. HS | 452 | 100% |
| West Frederick MS | Frederick HS | 561 | 100% |

2021-22 High School Enrollment, and Utilization Statistics

| High School | Grade Config | 2021-22 SRC | 9 | 10 | 11 | 12 | 2021-22 Total Enrollment | Enrollment Utilization |
|-----------------------|--------------|--------------|--------------|------------|------------|------------|--------------------------|------------------------|
| Frederick HS | 9-12th | 1601 | 540 | 396 | 368 | 356 | 1660 | 104% |
| Gov Thomas Johnson HS | 9-12th | 2001 | 608 | 428 | 428 | 378 | 1842 | 92% |
| Total | | 3,602 | 1,148 | 824 | 796 | 734 | 3,502 | 97% |

*Total calculated assuming all live-in students attend their assigned school.

| High School | Grade Config | 2021-22 SRC | Superintendent's Recommendation Estimated Enrollment | | | | | Estimated Enrollment Utilization | Proposed Total Students Moved Out | Proposed Total Students Moved In |
|-----------------------|--------------|--------------|---|------------|------------|------------|--------------|----------------------------------|-----------------------------------|----------------------------------|
| | | | 9 | 10 | 11 | 12 | Total* | | | |
| Frederick HS | 9-12th | 1601 | 569 | 414 | 392 | 385 | 1760 | 110% | 9 | 12 |
| Gov Thomas Johnson HS | 9-12th | 2001 | 617 | 450 | 456 | 423 | 1946 | 97% | 12 | 9 |
| Total | | 3,602 | 1,186 | 864 | 848 | 808 | 3,706 | 103% | 21 | 21 |

*Total calculated assuming all live-in students attend their assigned school.

Recommendation High School FARM Statistics

| High School | Grade Config | FARM | |
|-----------------------|--------------|-------------------------|-----------------------------------|
| | | 2021-22 Enrollment | Superintendent's Recommendation |
| | | FARM Enrollment Percent | FARM Estimated Enrollment Percent |
| Frederick HS | 9-12th | 52% | 52% |
| Gov Thomas Johnson HS | 9-12th | 47% | 47% |
| Total | | 49% | 49% |

High School Recommendation Impacts

The cells colored in green reflect live-in students who are not moved, and the cells colored in tan show the number of live-in students that are moved, where they are currently zoned, and where they will be zoned per the concept. The first table shows a sum of all students impacted per the concept.

| Student Impact Estimates | | |
|------------------------------------|--|--|
| Recommendation | Total 9-12th Live-In Students Impacted | Percent 9-12th Live-In Students Impacted |
| HS Superintendent's Recommendation | 21 | 1.3% |

| HS Zone 2020-21 | HS Superintendent's Recommendation | Total 2021-22 Live-In Students |
|-----------------|------------------------------------|--------------------------------|
| Frederick HS | Frederick HS | 1031 |
| Frederick HS | Gov. T.J. HS | 9 |
| Gov. T.J. HS | Frederick HS | 12 |
| Gov. T.J. HS | Gov. T.J. HS | 519 |

Glossary of Terms

State Rated Capacity (SRC) - The State of Maryland defines the State Rated Capacity (SRC) as “the number of students that the Interagency Committee on School Construction (IAC) or its designee determines that an individual school has the physical capacity to enroll and can be reasonably accommodated in a facility.”

2021-22 Total Enrollment - The total number of students attending a given school as of the September 30, 2021. Source is a database export from the Frederick County Public Schools' student information system.

Equated Enrollment - The number of Kindergarten through 5th grade students attending a given school plus the equated Pre-K students attending that school.

Equated Pre-K Students - Are counted as follows: all full day general education pre-k students are counted. 50% of half-day general education pre-k students are counted. 50% of 4-year-old special education students are counted. 25% of 3-year-old special education students are counted.

Utilization - Utilization is the enrollment divided by the state rated capacity (SRC) or Concept Capacity, described as a percentage.

Live-in students - Students residing inside of a school attendance boundary, regardless of where that student attends school.

Live and Attend-in students - Students that live inside a school attendance boundary, and attend that school.

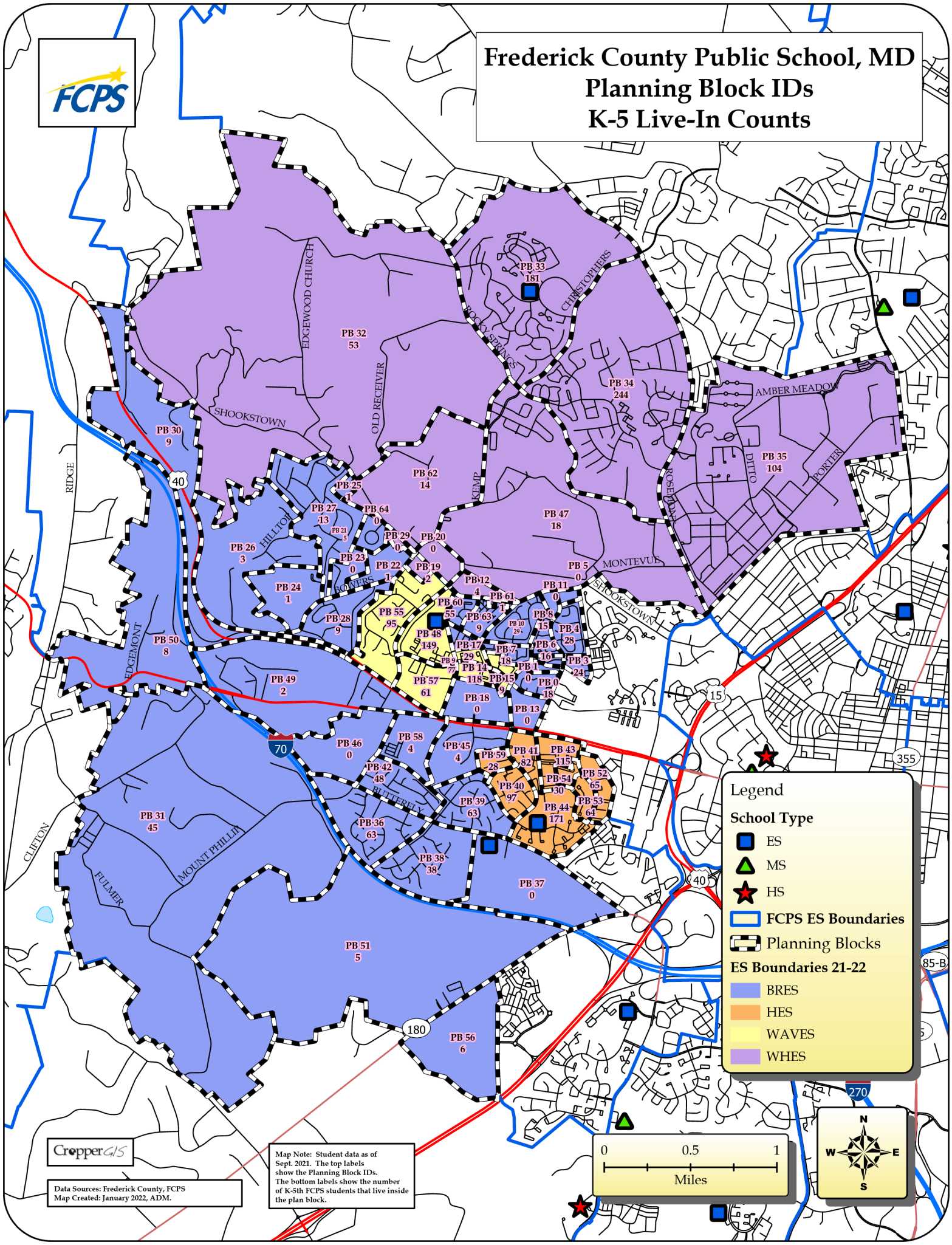
Live-out Attend-in students - Students that live outside of the 2021-22 attendance boundaries for the school that they attend, but attend that school.

FARM - Free and Reduced Meals.

Recommendation Impact - The number of live-in students that change attendance boundaries from the 2021-22 attendance boundaries given each concept. In other words, an estimate of the total number of students that could be impacted by the Superintendent's Recommendation.

Feeder Pattern - Indicates the middle and high schools to which a group of Elementary School students will graduate.

Frederick County Public School, MD Planning Block IDs K-5 Live-In Counts



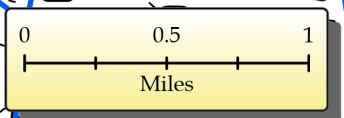
Legend

School Type

- ES
- ▲ MS
- ★ HS

ES Boundaries 21-22

- BRES
- HES
- WAVES
- WHES

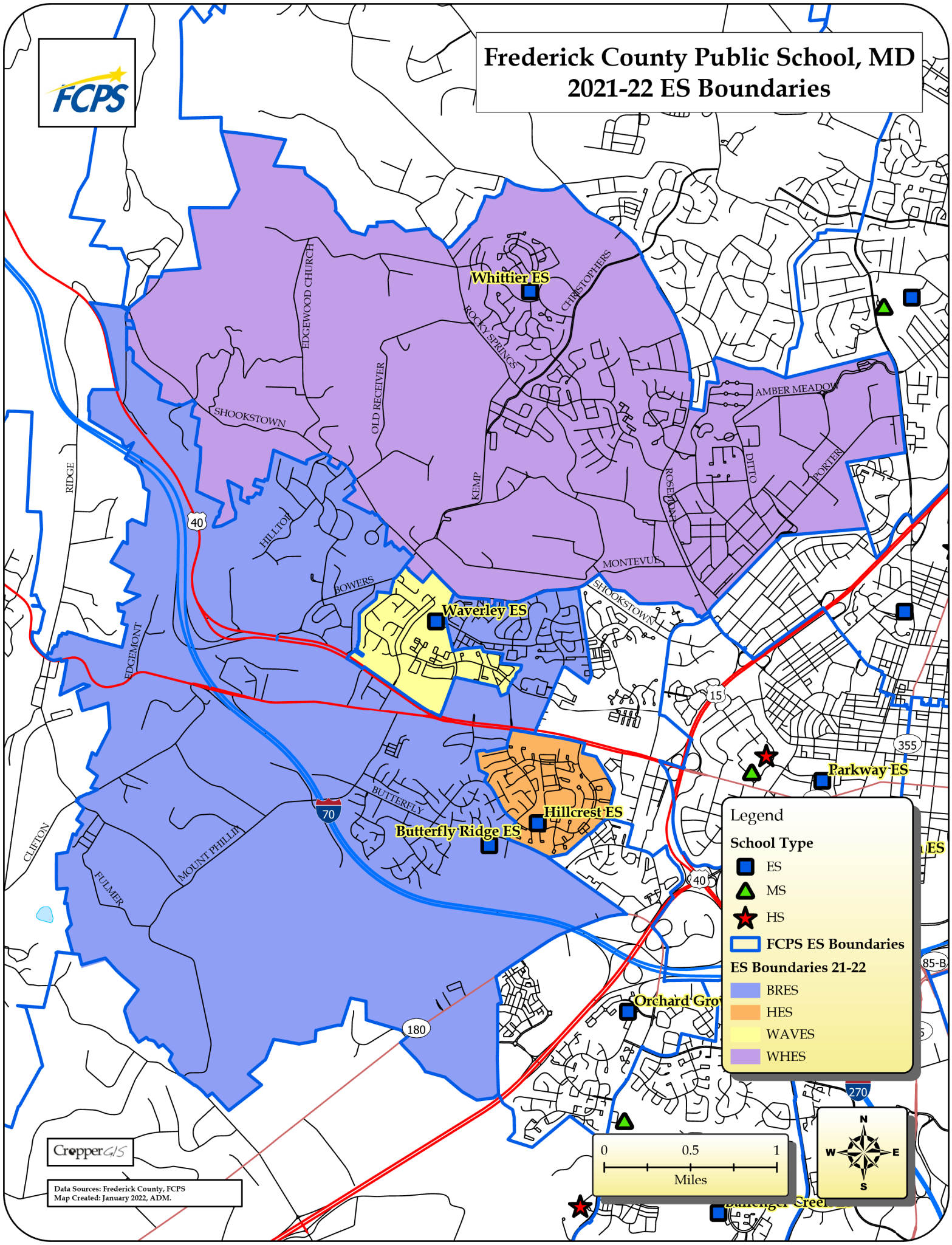


CropperGIS

Data Sources: Frederick County, FCPS
Map Created: January 2022, ADM.

Map Note: Student data as of Sept. 2021. The top labels show the Planning Block IDs. The bottom labels show the number of K-5th FCPS students that live inside the plan block.

Frederick County Public School, MD 2021-22 ES Boundaries



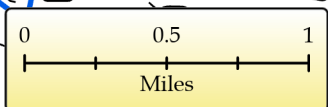
Legend

School Type

- ES
- MS
- HS
- FCPS ES Boundaries

ES Boundaries 21-22

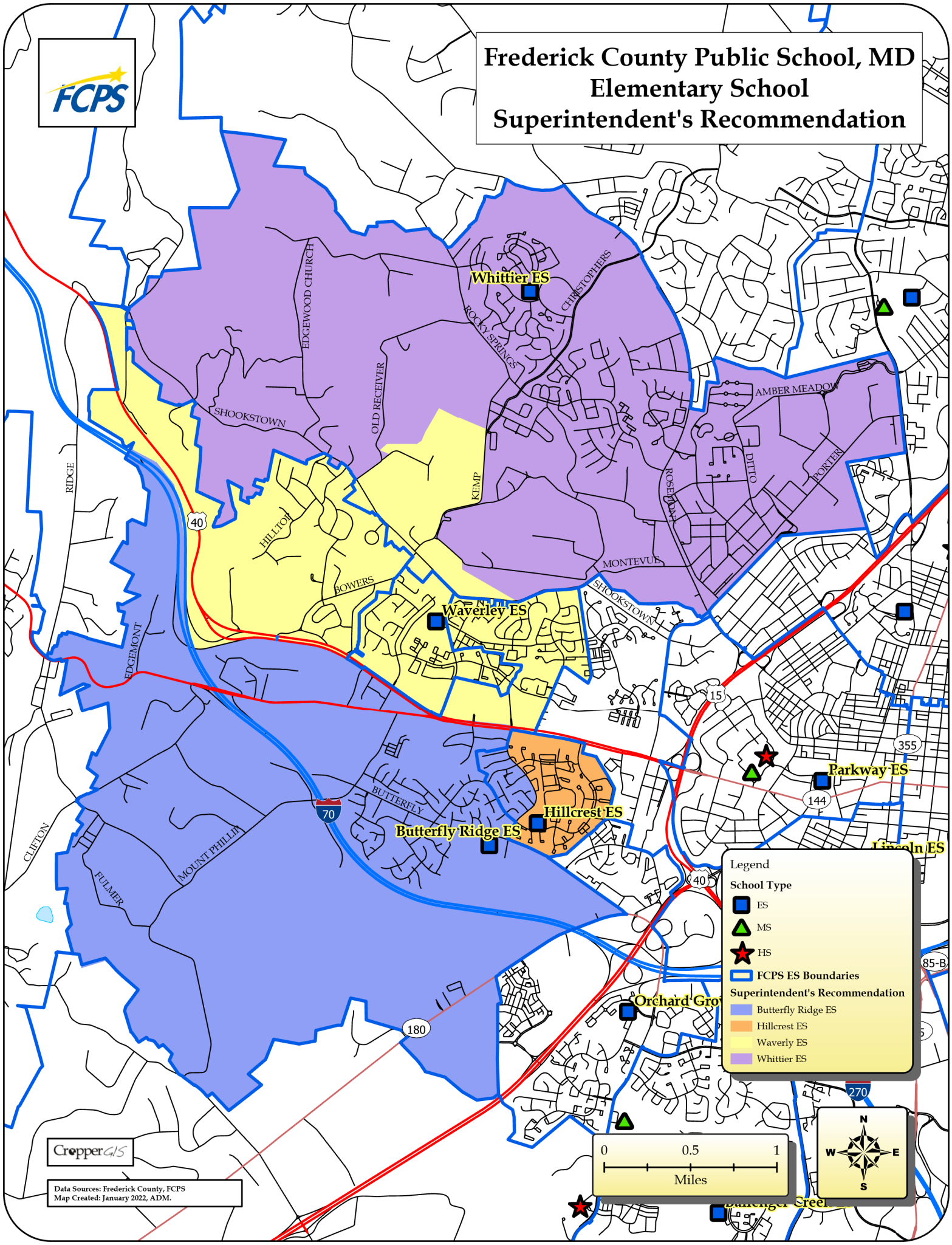
- BRES
- HES
- WAVES
- WHES



CropperGIS

Data Sources: Frederick County, FCPS
Map Created: January 2022, ADM.

Frederick County Public School, MD Elementary School Superintendent's Recommendation



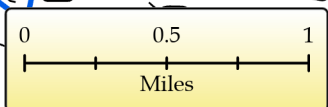
Legend

School Type

- ES
- ▲ MS
- ★ HS
- FCPS ES Boundaries

Superintendent's Recommendation

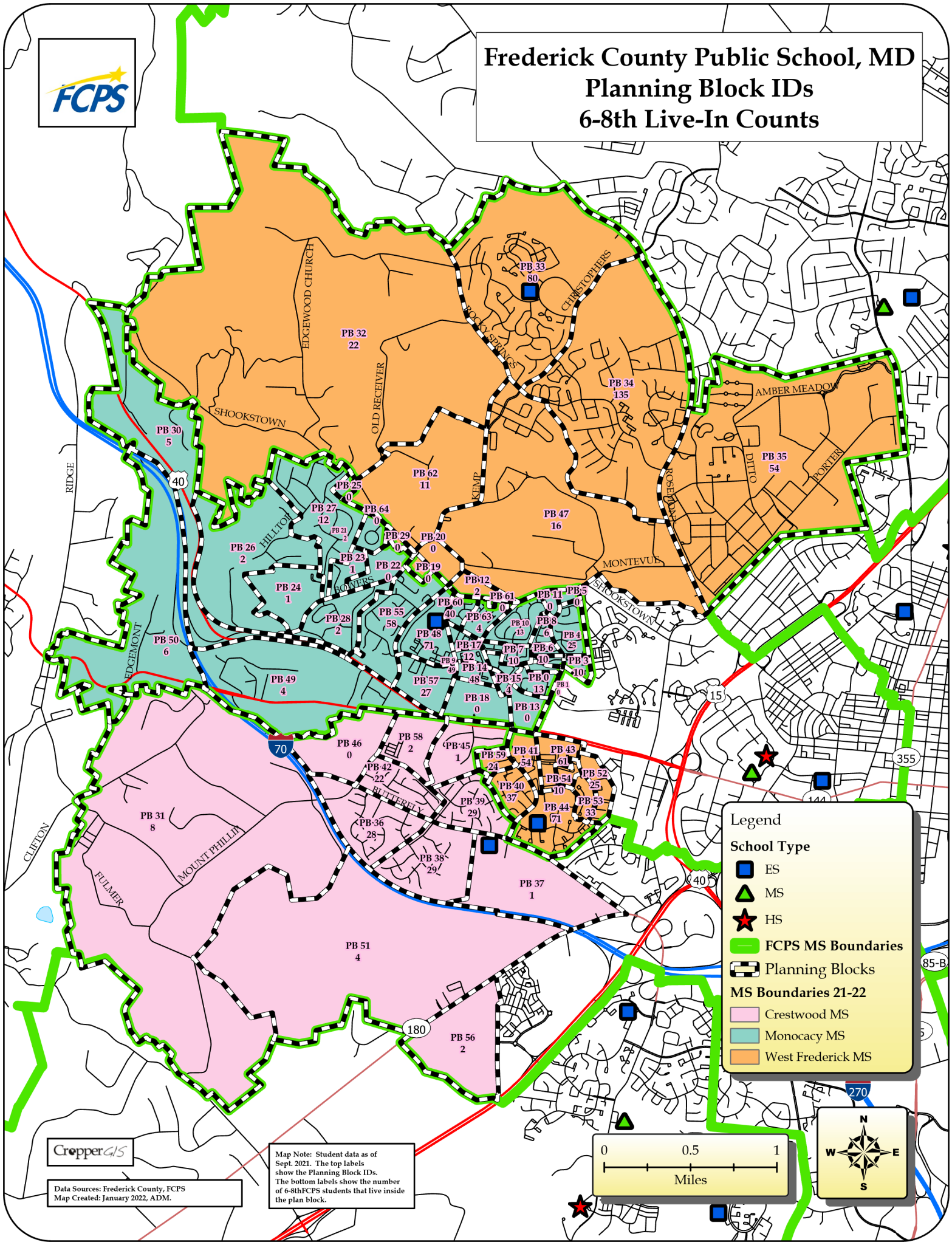
- Butterfly Ridge ES
- Hillcrest ES
- Waverley ES
- Whittier ES



CropperGIS

Data Sources: Frederick County, FCPS
Map Created: January 2022, ADM.

Frederick County Public School, MD Planning Block IDs 6-8th Live-In Counts



Legend

School Type

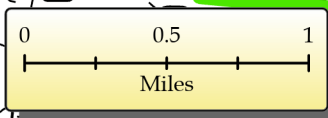
- ES
- ▲ MS
- ★ HS

FCPS MS Boundaries

- FCPS MS Boundaries
- Planning Blocks

MS Boundaries 21-22

- Crestwood MS
- Monocacy MS
- West Frederick MS

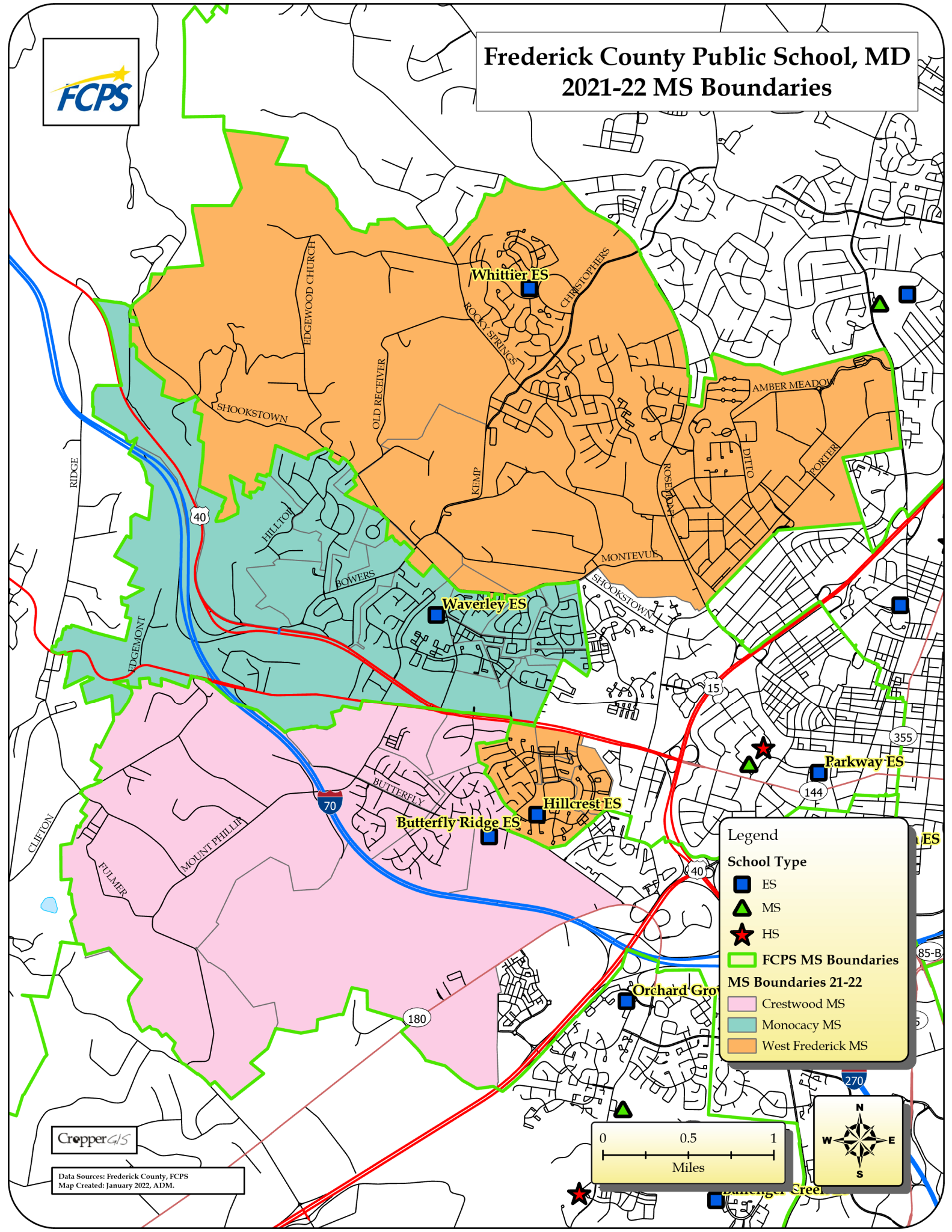


CropperGIS

Data Sources: Frederick County, FCPS
Map Created: January 2022, ADM.

Map Note: Student data as of Sept. 2021. The top labels show the Planning Block IDs. The bottom labels show the number of 6-8th FCPS students that live inside the plan block.

Frederick County Public School, MD 2021-22 MS Boundaries



Legend

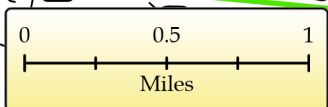
School Type

- ES
- ▲ MS
- ★ HS

FCPS MS Boundaries

MS Boundaries 21-22

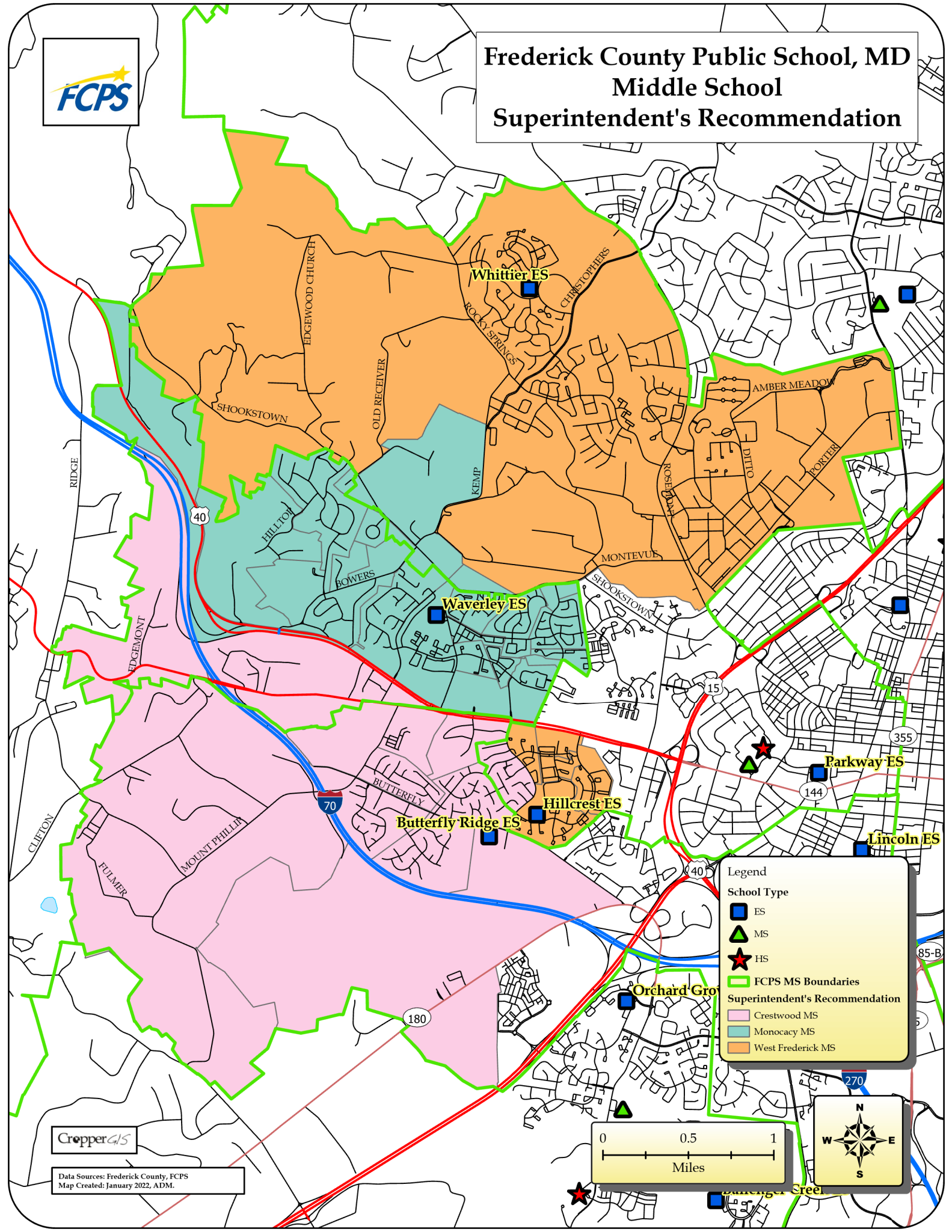
- Crestwood MS
- Monocacy MS
- West Frederick MS



CropperGIS

Data Sources: Frederick County, FCPS
Map Created: January 2022, ADM.

Frederick County Public School, MD Middle School Superintendent's Recommendation



Legend

School Type

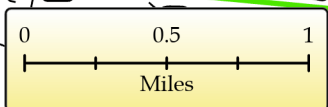
- ES
- ▲ MS
- ★ HS

FCPS MS Boundaries

- FCPS MS Boundaries

Superintendent's Recommendation

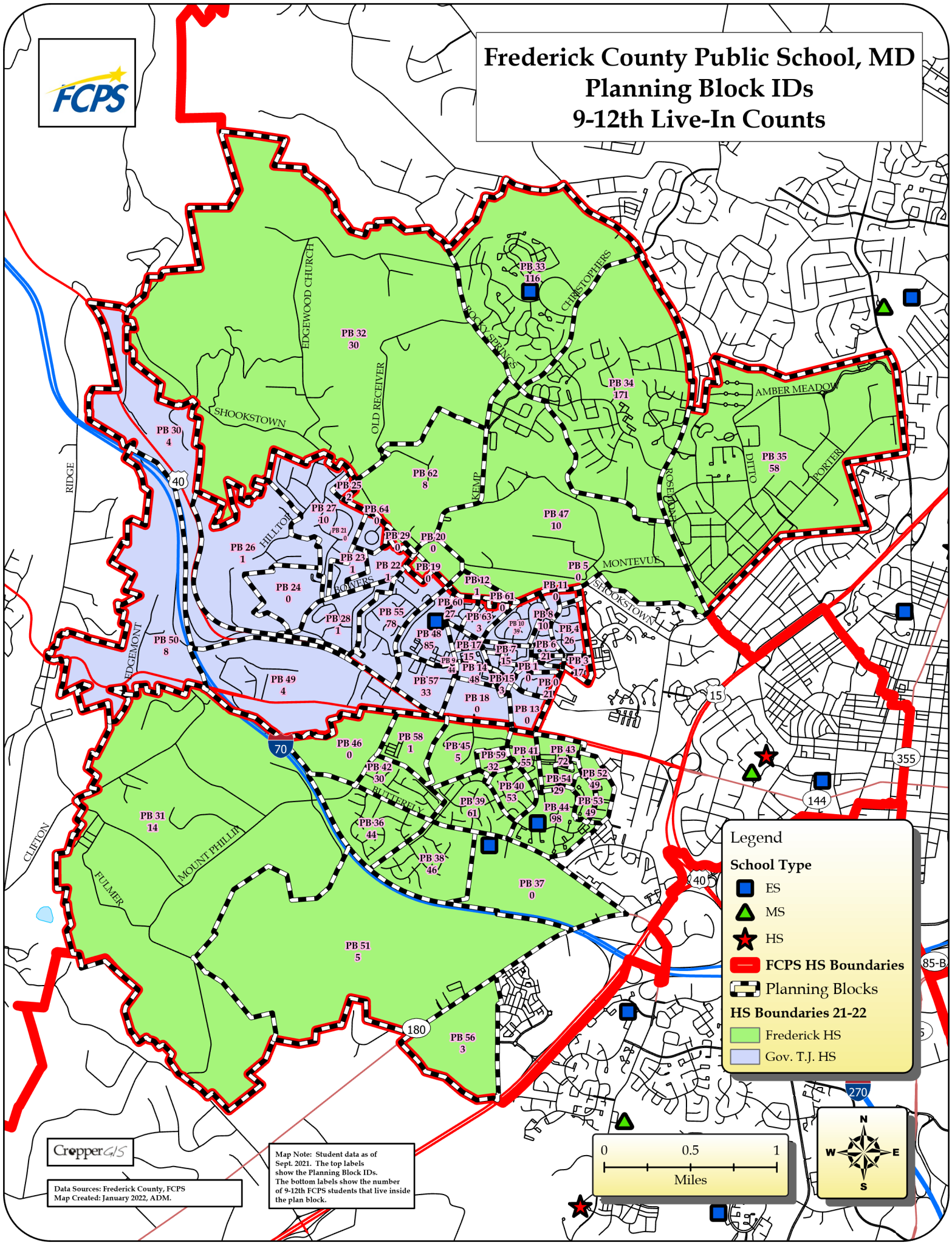
- Crestwood MS
- Monocacy MS
- West Frederick MS



CropperGIS

Data Sources: Frederick County, FCPS
Map Created: January 2022, ADM.

Frederick County Public School, MD Planning Block IDs 9-12th Live-In Counts



Legend

School Type

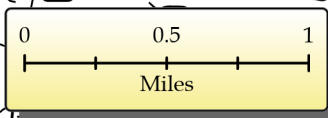
- ES
- ▲ MS
- ★ HS

FCPS HS Boundaries

- Planning Blocks

HS Boundaries 21-22

- Frederick HS
- Gov. T.J. HS

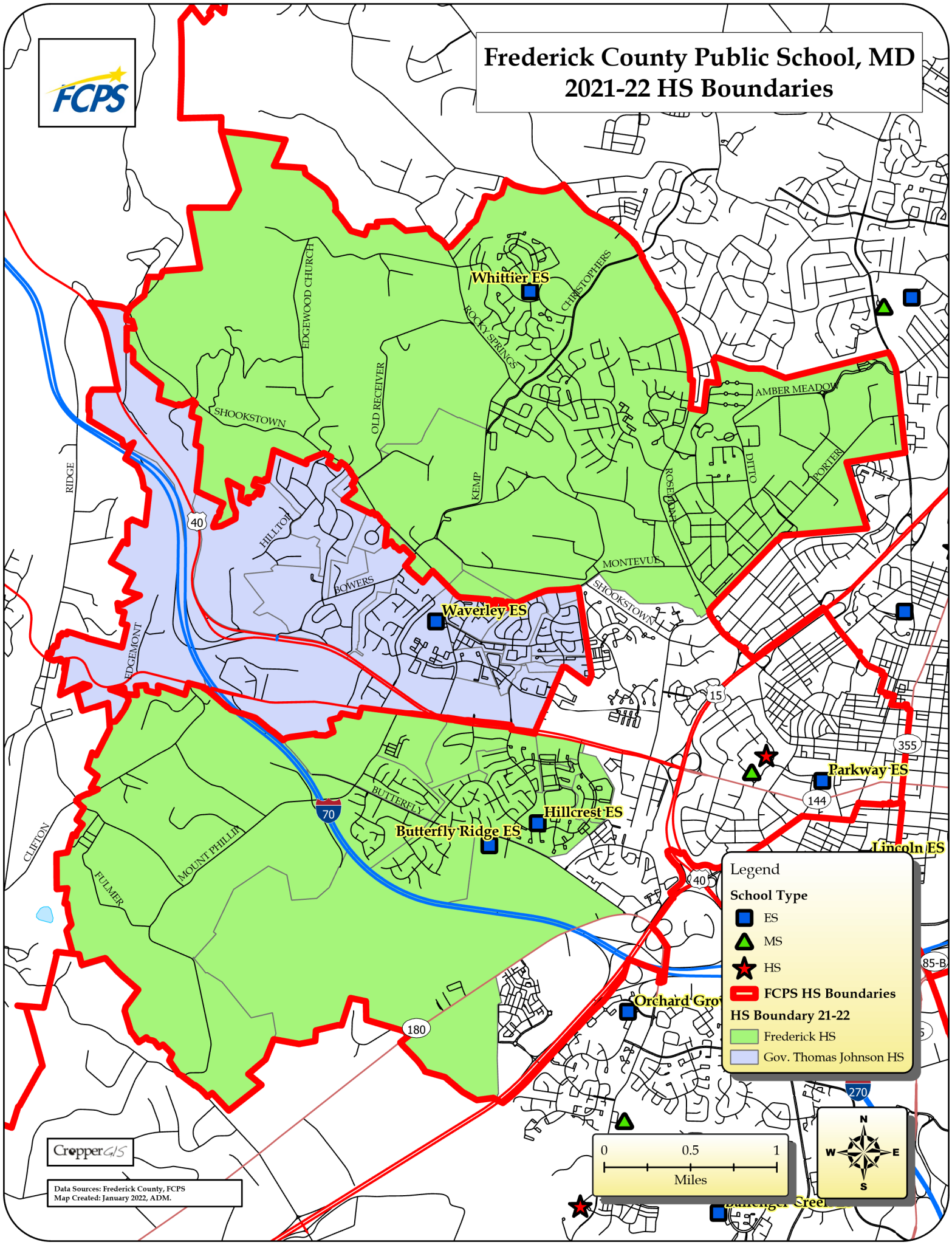


CropperGIS

Data Sources: Frederick County, FCPS
Map Created: January 2022, ADM.

Map Note: Student data as of Sept. 2021. The top labels show the Planning Block IDs. The bottom labels show the number of 9-12th FCPS students that live inside the plan block.

Frederick County Public School, MD 2021-22 HS Boundaries



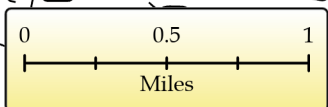
Legend

School Type

- ES
- ▲ MS
- ★ HS
- FCPS HS Boundaries

HS Boundary 21-22

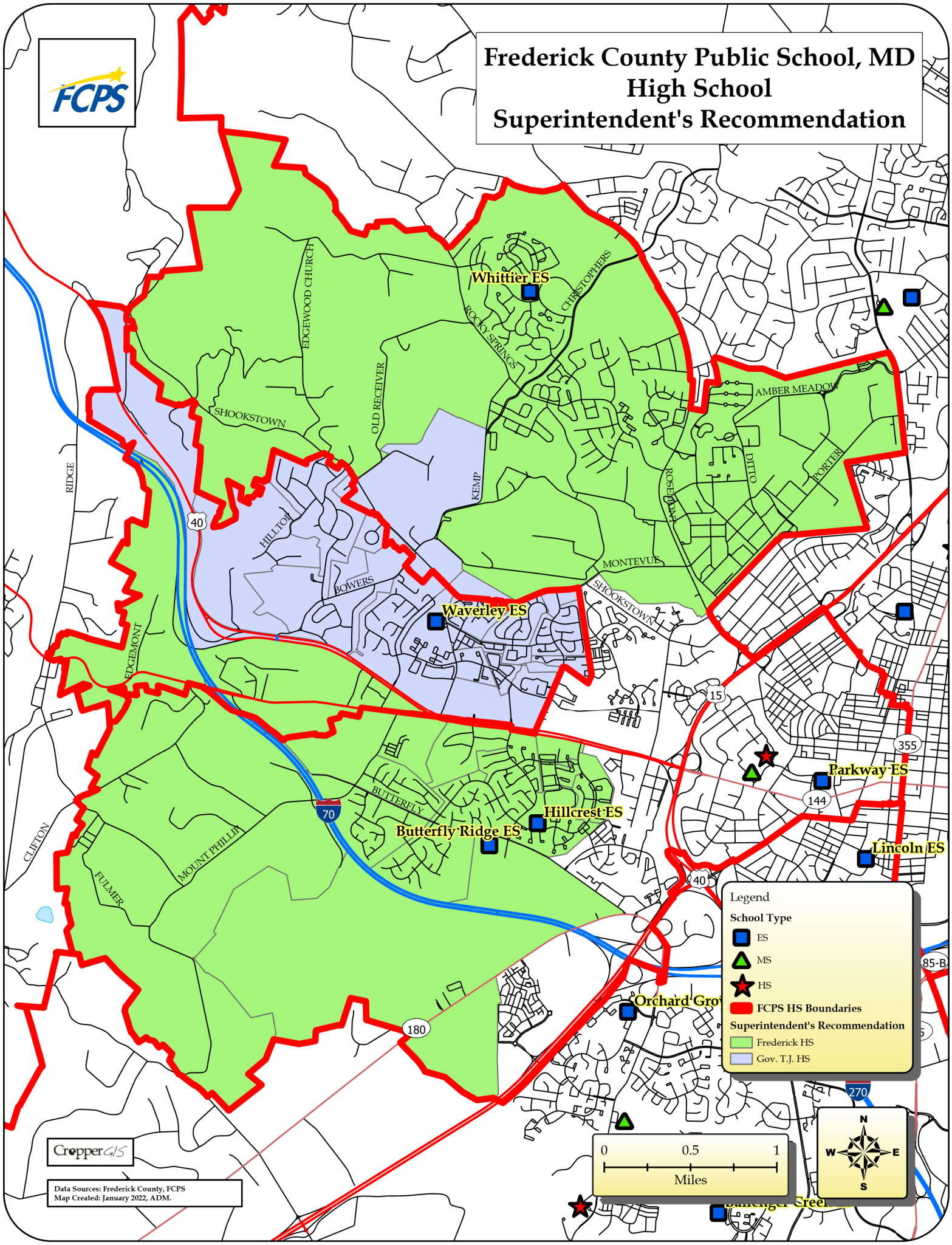
- Frederick HS
- Gov. Thomas Johnson HS



CropperGIS

Data Sources: Frederick County, FCPS
Map Created: January 2022, ADM.

Frederick County Public School, MD High School Superintendent's Recommendation



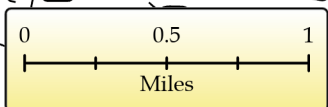
Legend

School Type

- ES
- ▲ MS
- ★ HS
- FCPS HS Boundaries

Superintendent's Recommendation

- Frederick HS
- Gov. T.J. HS



CropperGIS

Data Sources: Frederick County, FCPS
Map Created: January 2022, ADM.