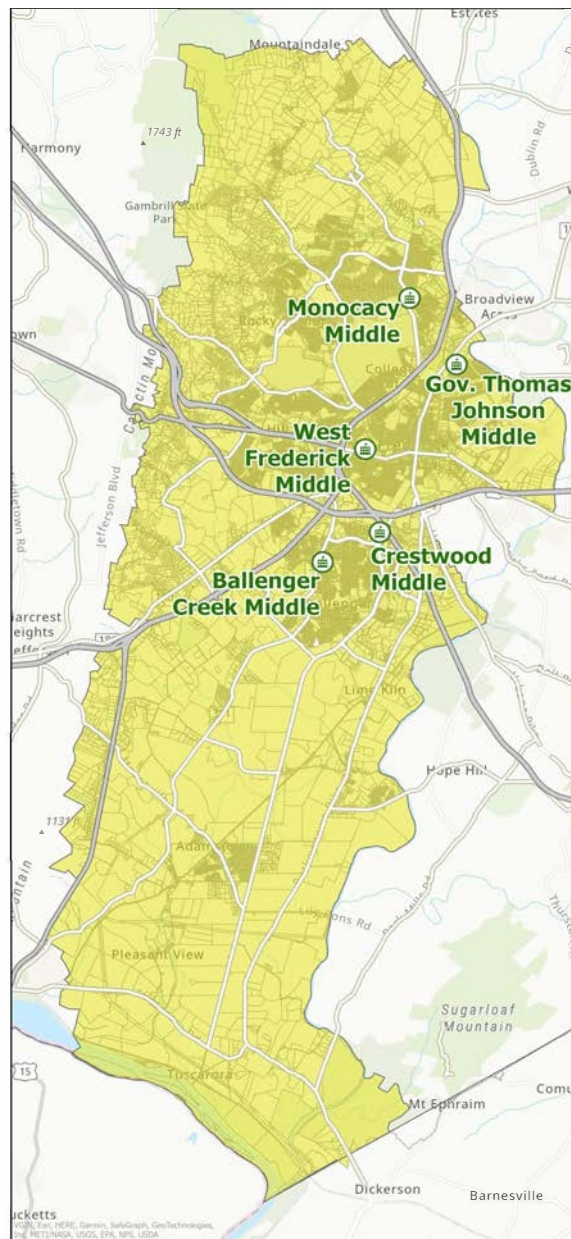


Addendum to the Frederick County Public Schools Crestwood Area Redistricting Study Superintendent's Recommendation



September 6, 2023

TABLE OF CONTENTS

<u>SUPERINTENDENT'S RECOMMENDATION SUMMARY</u>	<u>2</u>
Superintendent's Recommended Changes at Elementary School Level	3
Superintendent's Recommendation: Elementary School Attendance Areas	4
Superintendent's Recommended Changes at Middle School Level	6
Superintendent's Recommendation: Middle School Attendance Areas	7
Superintendent's Recommended Changes at High School Level	9
Superintendent's Recommendation: High School Attendance Areas	10
Superintendent's Recommendation Highlights	11
<u>ALTERNATIVE 1 SUMMARY</u>	<u>12</u>
Alternative 1: Changes at Elementary School Level	13
Alternative 1: Elementary School Attendance Areas	14
Alternative 1: Changes at Middle School Level	16
Alternative 1: Middle School Attendance Areas	17
Alternative 1: Changes at High School Level	19
Alternative 1: High School Attendance Areas	20
Alternative 1 Highlights	21
<u>ALTERNATIVE 2 SUMMARY</u>	<u>23</u>
Alternative 2: Changes at Elementary School Level	24
Alternative 2: Elementary School Attendance Areas	25
Alternative 2: Changes at Middle School Level	27
Alternative 2: Middle School Attendance Areas	28
Alternative 2: Changes at High School Level	30



Alternative 2: High School Attendance Areas	31
Alternative 2 Highlights	32
ALTERNATIVE 3 SUMMARY	34
Alternative 3: Changes at Elementary School Level	35
Alternative 3: Elementary School Attendance Areas	36
Alternative 3: Changes at Middle School Level	38
Alternative 3: Middle School Attendance Areas	39
Alternative 3: Changes at High School Level	41
Alternative 3: High School Attendance Areas	42
Alternative 3 Highlights	43
APPENDIX	44
ENROLLMENTS	45
Elementary School Live-in Enrollments and Projections	45
Middle School Live-in Enrollments and Projections	46
High School Live-in Enrollments and Projections	47
FEEDER PATTERNS	48
NUMBER OF IMPACTED STUDENTS	49
DEMOGRAPHICS	50
Students eligible for Free and Reduced Meals	50
Multilingual Learners	51
Students with an Individualized Education Program (IEP)	52
NON-TRANSPORTED AREAS	53
RESIDENTIAL DEVELOPMENT PIPELINE - SUMMARY	54
RESIDENTIAL DEVELOPMENT PIPELINE - DETAILS	55

The Superintendent's recommendation for the Crestwood Area Redistricting Study was presented to the Board of Education on May 3, 2023. Four community meetings were also held in May to present the recommendation to the school communities and receive comments. In response to community comments, the Board of Education directed staff to prepare alternatives to the Superintendent's recommendation for Board consideration.

FCPS staff evaluated multiple alternatives addressing community comments received to date while also considering the factors included in Board of Education Policy 200. However, not all of the alternatives were able to address all of the comments while at the same time adequately addressing the factors found in the Board of Education's Policy.

Three of the alternatives considered were found to address most of the comments while at the same time meeting many of the Board Policy 200 factors. The following summarizes the Superintendent's recommendation and identifies the changes to existing attendance boundaries for each of the three new alternatives and highlights how the factors found in the Board Policy were considered. It is important to note that neighborhoods not impacted in the Superintendent's initial recommendation may be impacted in one or more of the new alternatives.

Maps of the Superintendent's recommendation and the alternatives can be found after each summary. The data tables for each can be found at the end of the Addendum.

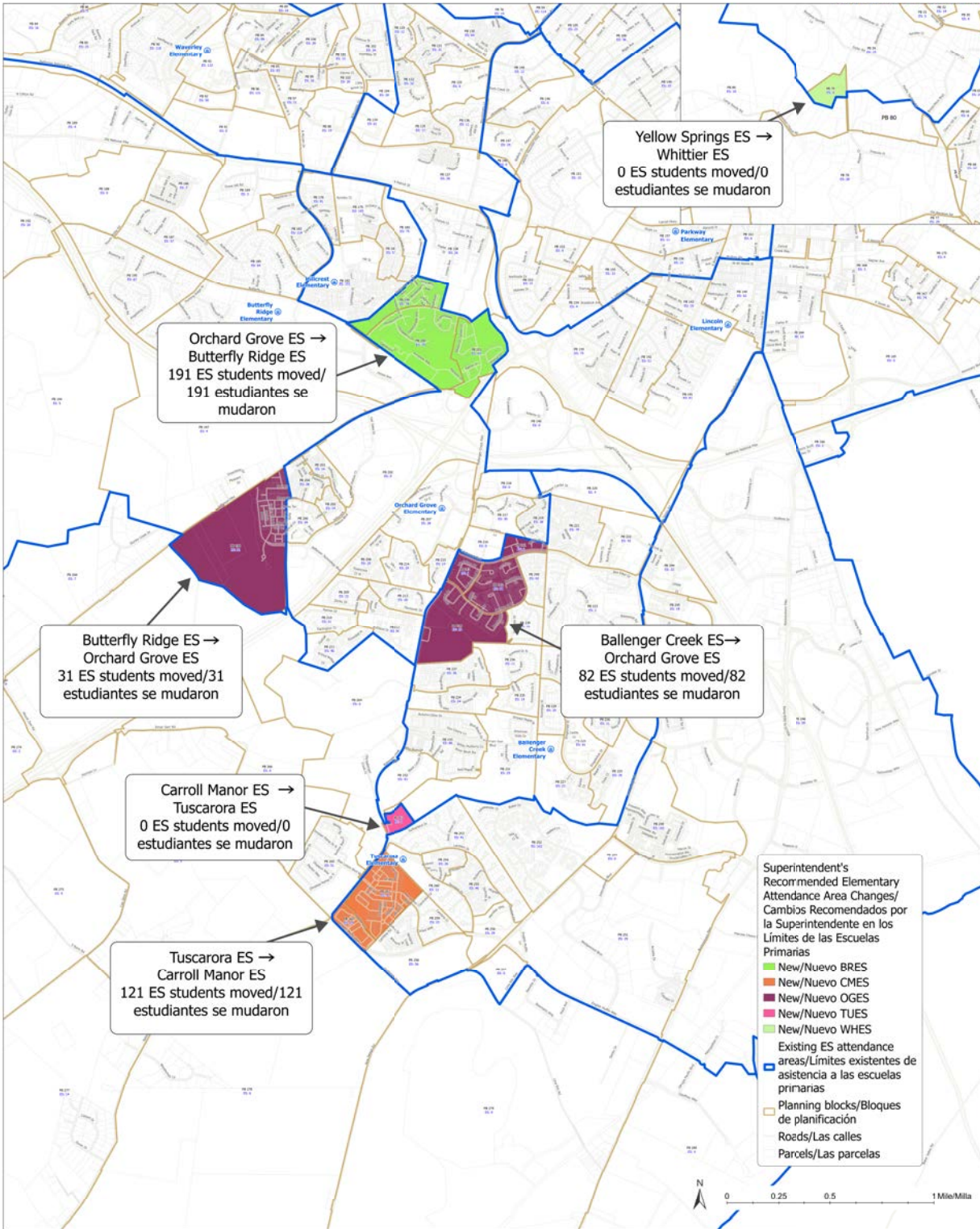
Finally, in reviewing the Superintendent's recommendation to develop alternatives, staff made a correction to the Governor Thomas Johnson HS enrollment projections. The enrollment projections for Governor Thomas Johnson HS are 113% in 2024 and 106% in 2029, and the correction is included in this document. FCPS staff also reconfirmed the other data in the Superintendent's recommendation to validate all the information. In addition, FCPS staff contracted with CropperGIS to review and confirm all the data and the methodology utilized in the Superintendent's recommendation and in this Addendum.

SUPERINTENDENT'S RECOMMENDATION SUMMARY

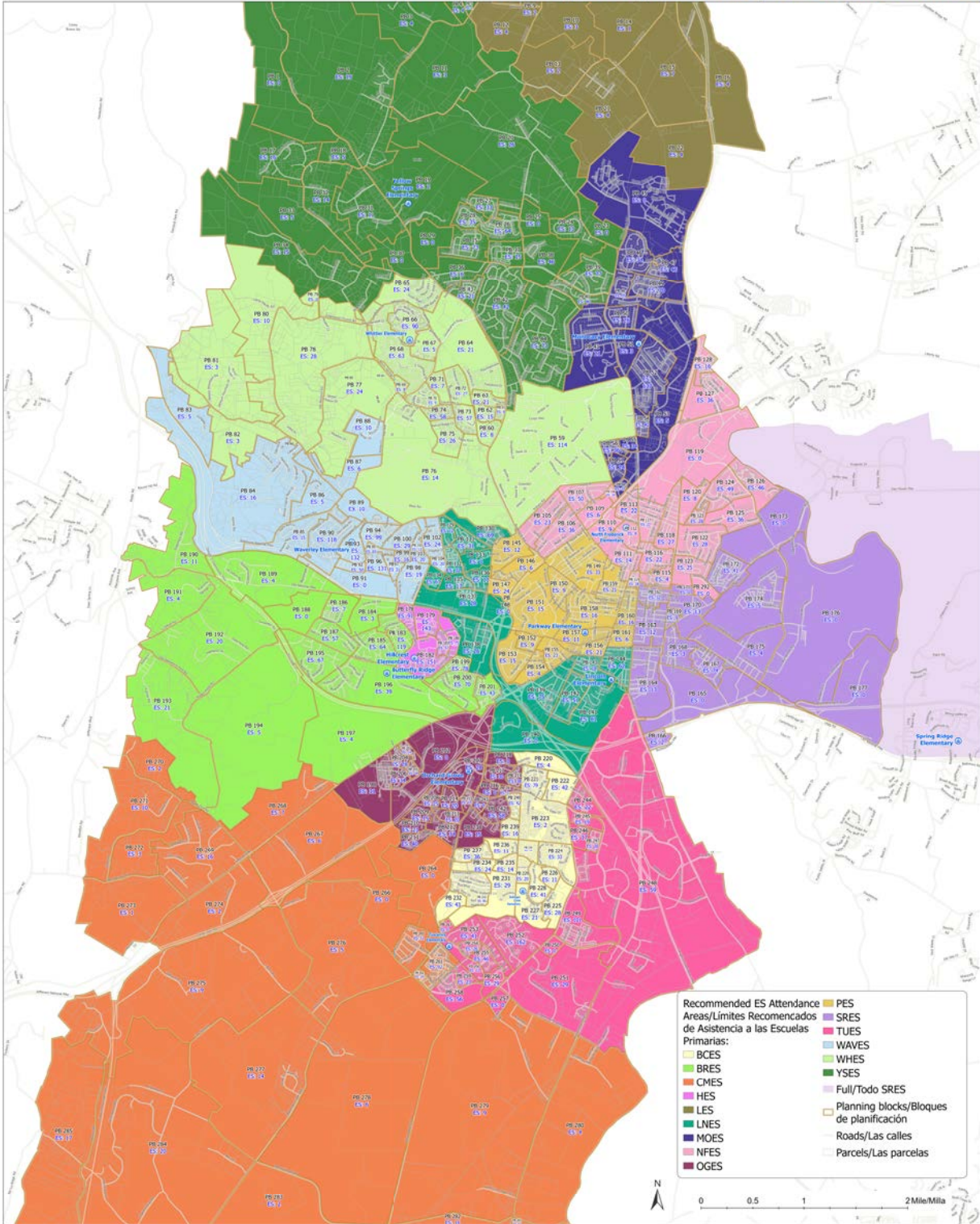
Elementary Schools:

- Move the neighborhoods on Himes Avenue (Planning Blocks 199, 200 and 201) from Orchard Grove ES to Butterfly Ridge ES
- Move the Jefferson Park West neighborhood (Planning 198) from Butterfly Ridge ES to Orchard Grove ES
- Move a portion of the Farmbrook neighborhood (Planning Blocks 238, 241, 242 and 243) on the east side of Ballenger Creek Pike from Ballenger Creek ES to Orchard Grove ES
- Move the Linton East neighborhood on the east side of Ballenger Creek Pike, south of Tuscarora ES, (Planning Blocks 261 and 262) from Tuscarora ES to Carroll Manor ES

Superintendent's Recommended Changes at Elementary School Level



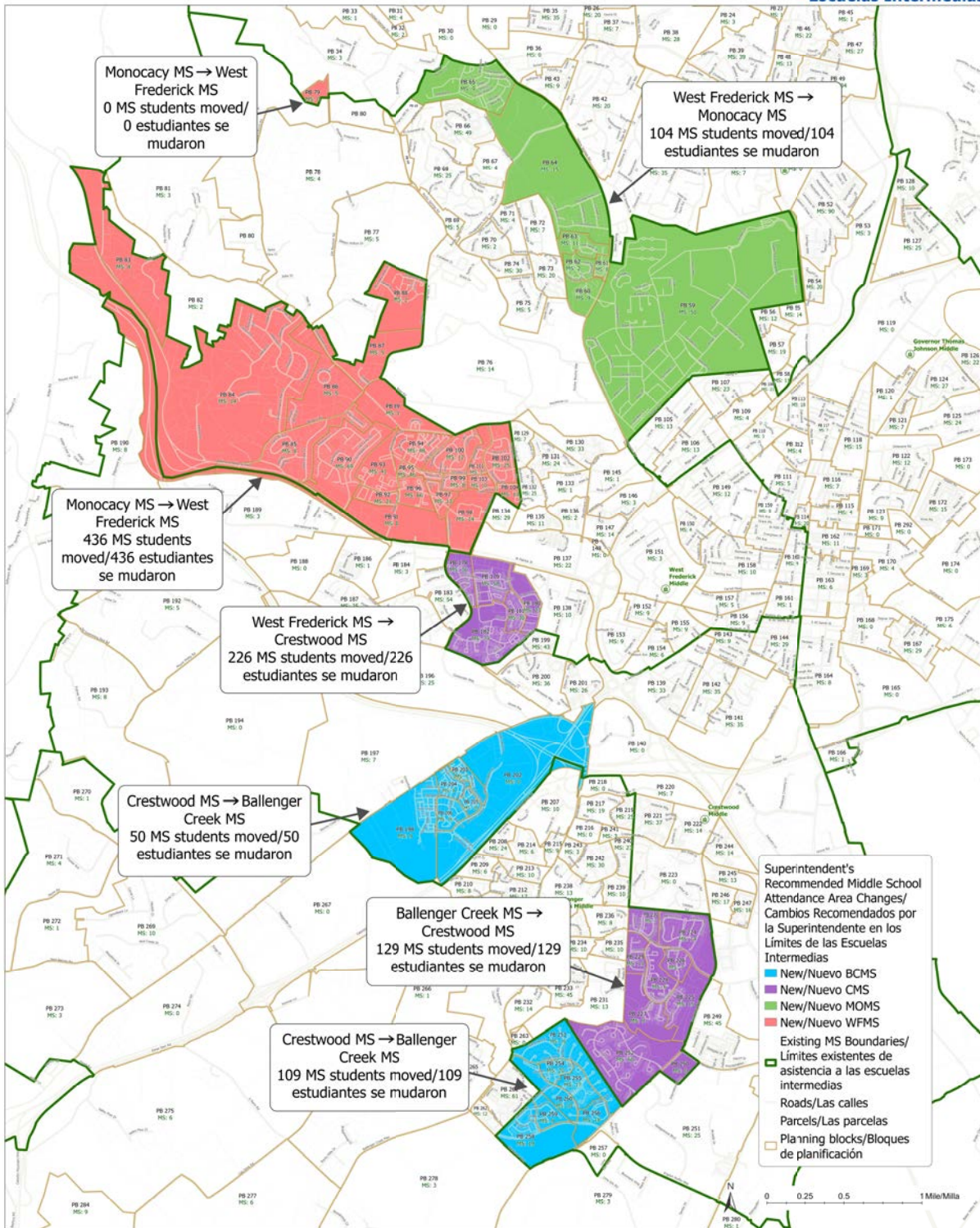
Superintendent's Recommendation: Elementary School Attendance Areas



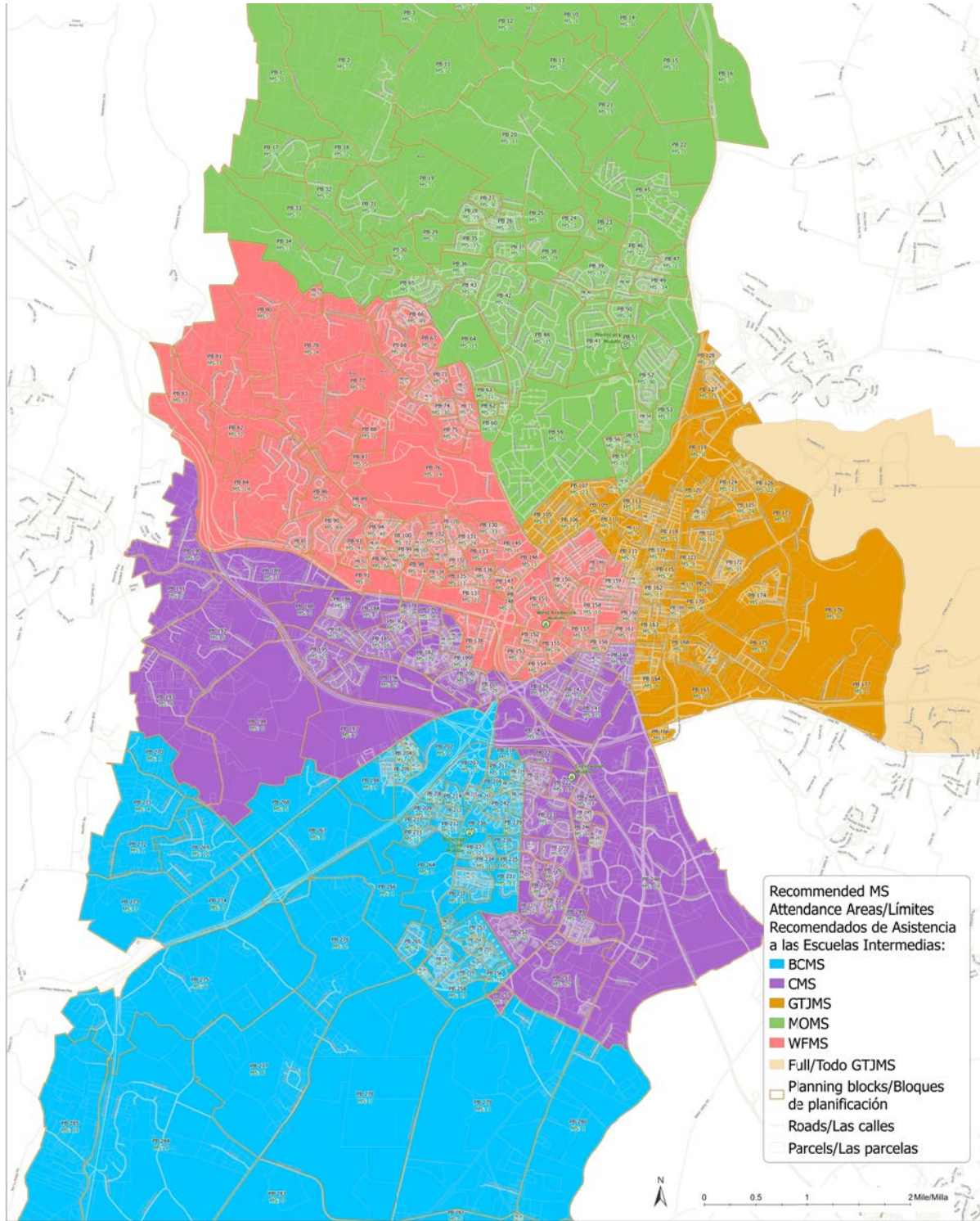
Middle Schools:

- Move the Kellerton Land Bay B, West Hills and Old Farm neighborhoods on the west side of Yellow Springs Road and the Fort Detrick neighborhood (Planning Blocks 59, 60, 61, 62, 63, 64 and 65) from West Frederick MS to Monocacy MS.
- Move the current Waverley ES attendance area (Planning Blocks 83, 84, 85, 86, 87, 88, 89, 90, 91, 92, 93, 94, 95, 96, 97, 98, 99, 100, 101, 102, 103 and 104) from Monocacy MS to West Frederick MS
- Move the current Hillcrest ES attendance area (Planning Blocks 178, 179, 180, 181 and 182) from West Frederick MS to Crestwood MS
- Move the Jefferson Park West and Jefferson Tech Park neighborhoods (Planning Blocks 198, 202, 203, 204, 205 and 206) from Crestwood MS to Ballenger Creek MS
- Move the Wellington Trace and Manors at Ballenger Creek neighborhoods (Planning Blocks 253, 254, 255, 256, 258, 259, 260) from Crestwood MS to Ballenger Creek MS
- Move Robin Meadows, Kingscrest Apartments and Kingsbrook neighborhoods (Planning Blocks 224, 225, 226, 227, 228, 229, 230, 250 and 252) from Ballenger Creek MS to Crestwood MS

Superintendent's Recommended Changes at Middle School Level



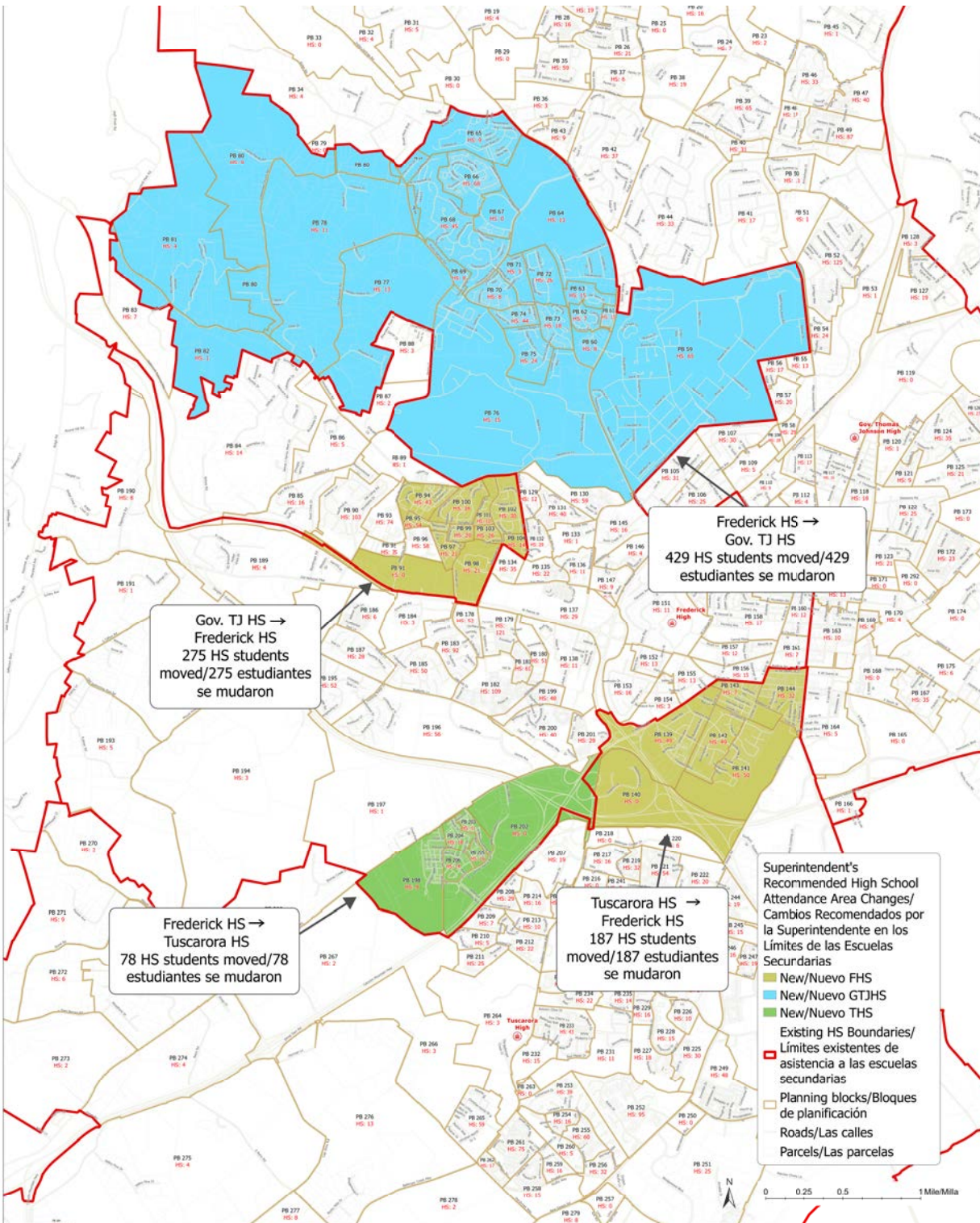
Superintendent's Recommendation: Middle School Attendance Areas



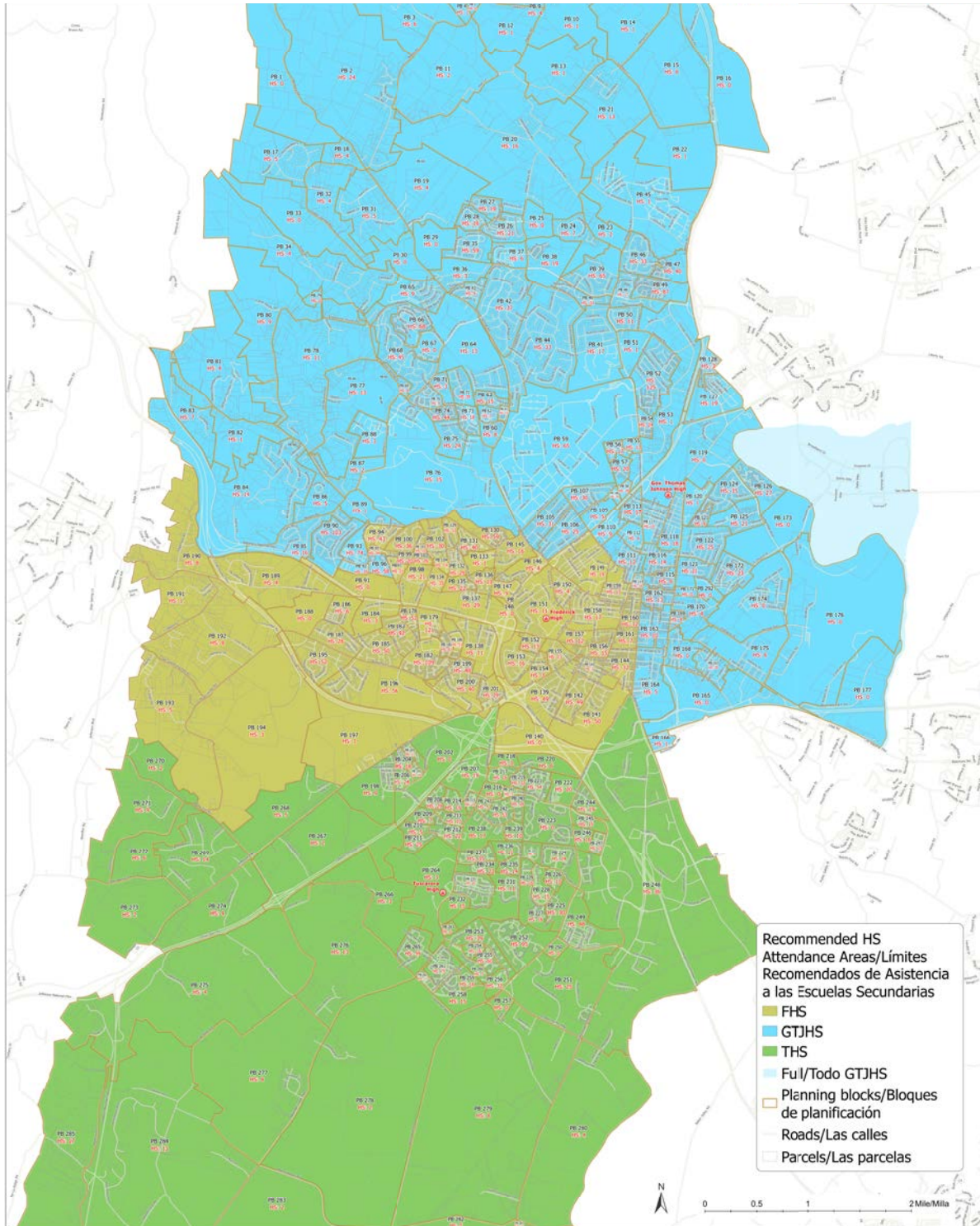
High Schools:

- Move the current Whittier ES attendance area (Planning Blocks 59, 60, 61, 62, 63, 64, 65, 66, 67, 68, 69, 70, 71, 72, 73, 74, 75, 76, 77, 78, 80, 81 and 82) from Frederick HS to Governor Thomas Johnson HS
- Move the Waverley View, Commons of Avalon, Overlook at Avalon, Coventry, Baker Place Apartments, Little Brook, Willowdale Apartments, Willowcrest and the Residences at the Manor neighborhoods (Planning Blocks 91, 94, 95, 97, 98, 99, 100, 101, 102, 103 and 104) from Governor Thomas Johnson HS to Frederick HS
- Move Jefferson Park West and Jefferson Tech Park neighborhoods (Planning Blocks 198, 202, 203, 204, 205 and 206) from Frederick HS to Tuscarora HS
- Move neighborhoods surrounding Lincoln ES, Carrollton Park, Mt. Olivet Cemetery and McCurdy Field (Planning Blocks 139, 140, 141, 142, 143 and 144) from Tuscarora HS to Frederick HS

Superintendent's Recommended Changes at High School Level



Superintendent's Recommendation: High School Attendance Areas



Superintendent's Recommendation Highlights

The Superintendent's recommendation impacts a total of 2,448 students – 1,054 students at the middle school level, 425 students at the elementary school level and 969 students at the high school level. However, by moving these students, middle school enrollments are better balanced resulting in all five middle schools below 100% of capacity in August 2029. In addition, enrollments at both Ballenger Creek and Tuscarora elementary schools are reduced by 5 and 9 percentage points respectively, from the projections with current attendance boundaries. Both schools are projected to be significantly over capacity if no attendance boundary adjustments are made.

While the recommendation creates a split feeder at Whittier ES and West Frederick MS, the split is relatively balanced at Whittier (33% moving to Monocacy MS and 67% moving to West Frederick MS) and very evenly balanced at West Frederick MS (53% moving to FHS and 47% to Governor Thomas Johnson HS). In addition, the recommendation provides a better balance of the Ballenger Creek ES split to Ballenger Creek (50%) and Crestwood (50%) middle schools, and eliminates the split feeder at Orchard Grove ES.

In considering the indicators of students requiring additional support, the Superintendent's recommendation reduces the percentage of students eligible for Free and Reduced Meals at Monocacy MS by 15 percentage points while percentages at Crestwood MS and West Frederick MS are only marginally increased by 8 and 4 percentage points respectively. The percentage of students eligible for Free and Reduced Meals at Frederick HS increased by 10 percentage points while the percentage of the same students decreased by 6 percentage points at Governor Thomas Johnson HS. The percentage of students eligible for Free and Reduced Meals at the elementary school level changed by no more than 1 or 2 percentage points.

The number of multilingual learners increased by 9 percentage points to 19% at CMS while it decreases by 10 percentage points at Monocacy MS to 5%. No changes in multilingual learners were seen at Ballenger Creek MS or Governor Thomas Johnson MS while West Frederick saw a decrease in 1 percentage point to 19% multilingual learners.

The number of students with individual education plans remains relatively unchanged at all schools other than 1 or 2 percentage points.

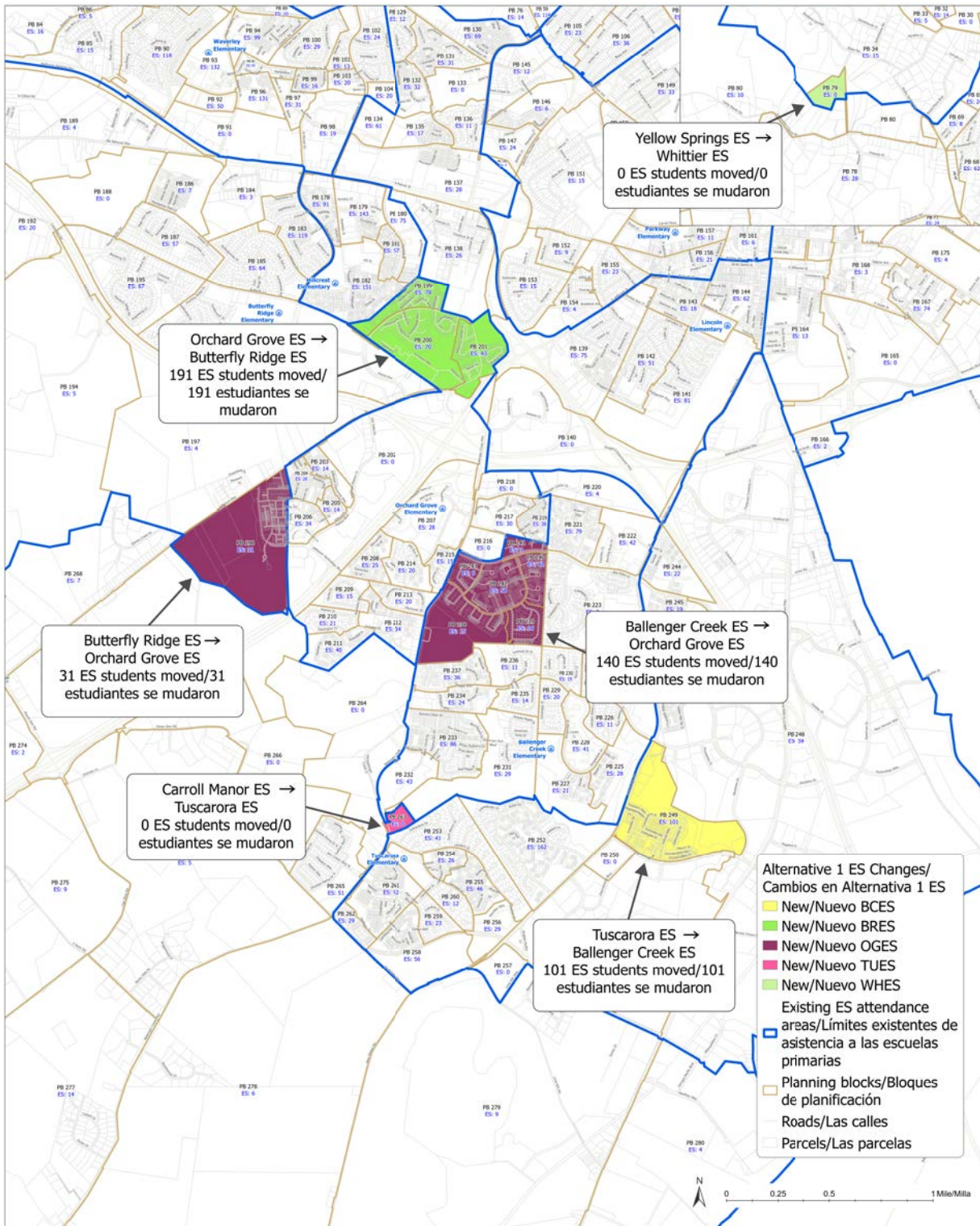
Finally, the Superintendent's recommendation increases the number of walkers at the middle school level by 109 students and by 187 students at the high school level while there are 121 fewer walkers at the elementary level.

ALTERNATIVE 1 SUMMARY

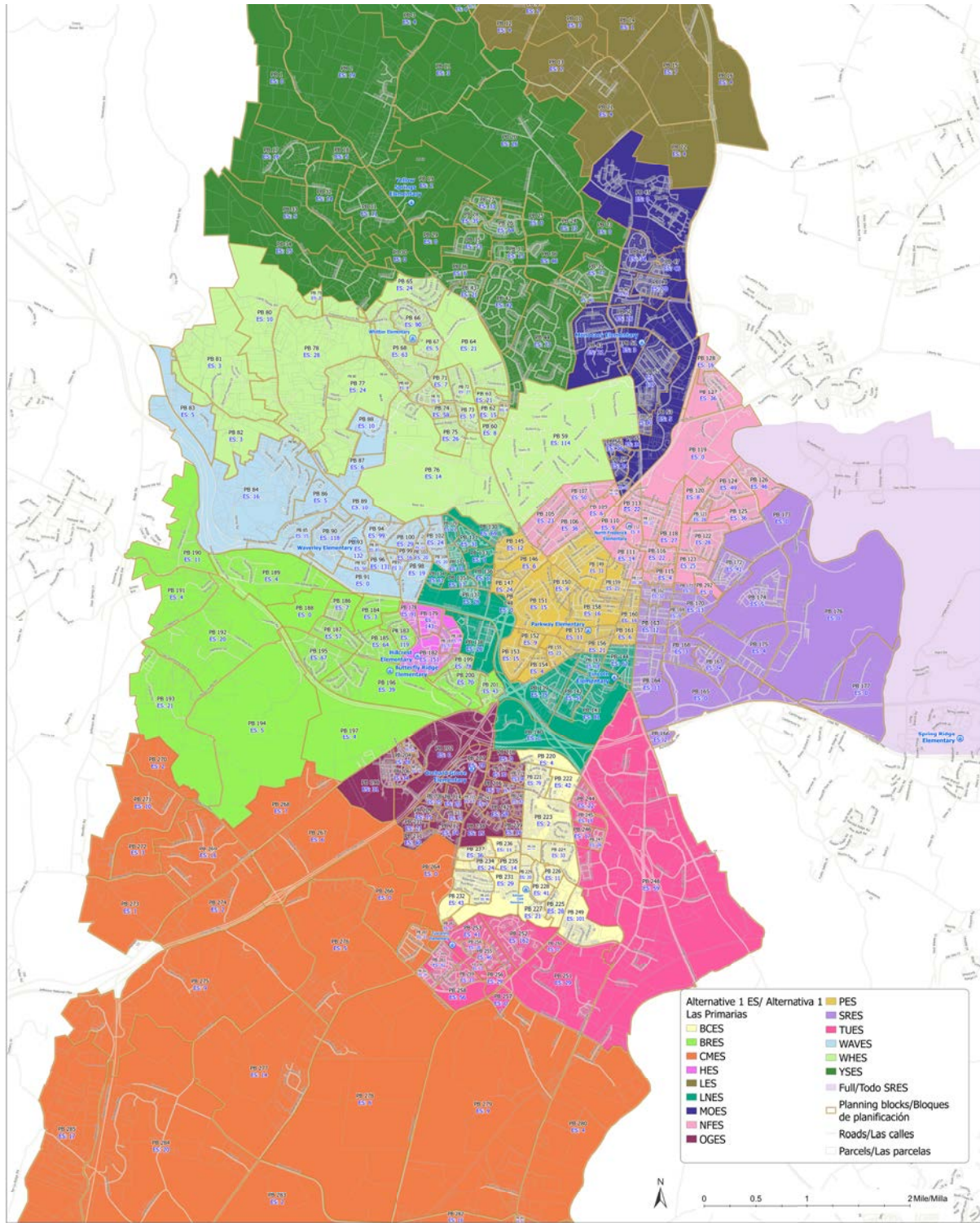
Elementary Schools:

- Move the neighborhoods on Himes Avenue (Planning Blocks 199, 200 and 201) from Orchard Grove ES to Butterfly Ridge ES
- Move the Jefferson Park West neighborhood (Planning 198) from Butterfly Ridge ES to Orchard Grove ES
- Move the Farmbrook neighborhood (Planning Blocks 238, 239, 240, 241, 242, and 243) on the east side of Ballenger Creek Pike from Ballenger Creek ES to Orchard Grove ES
- Move Westview South (Planning Block 249) from Tuscarora ES to Ballenger Creek ES

Alternative 1: Changes at Elementary School Level



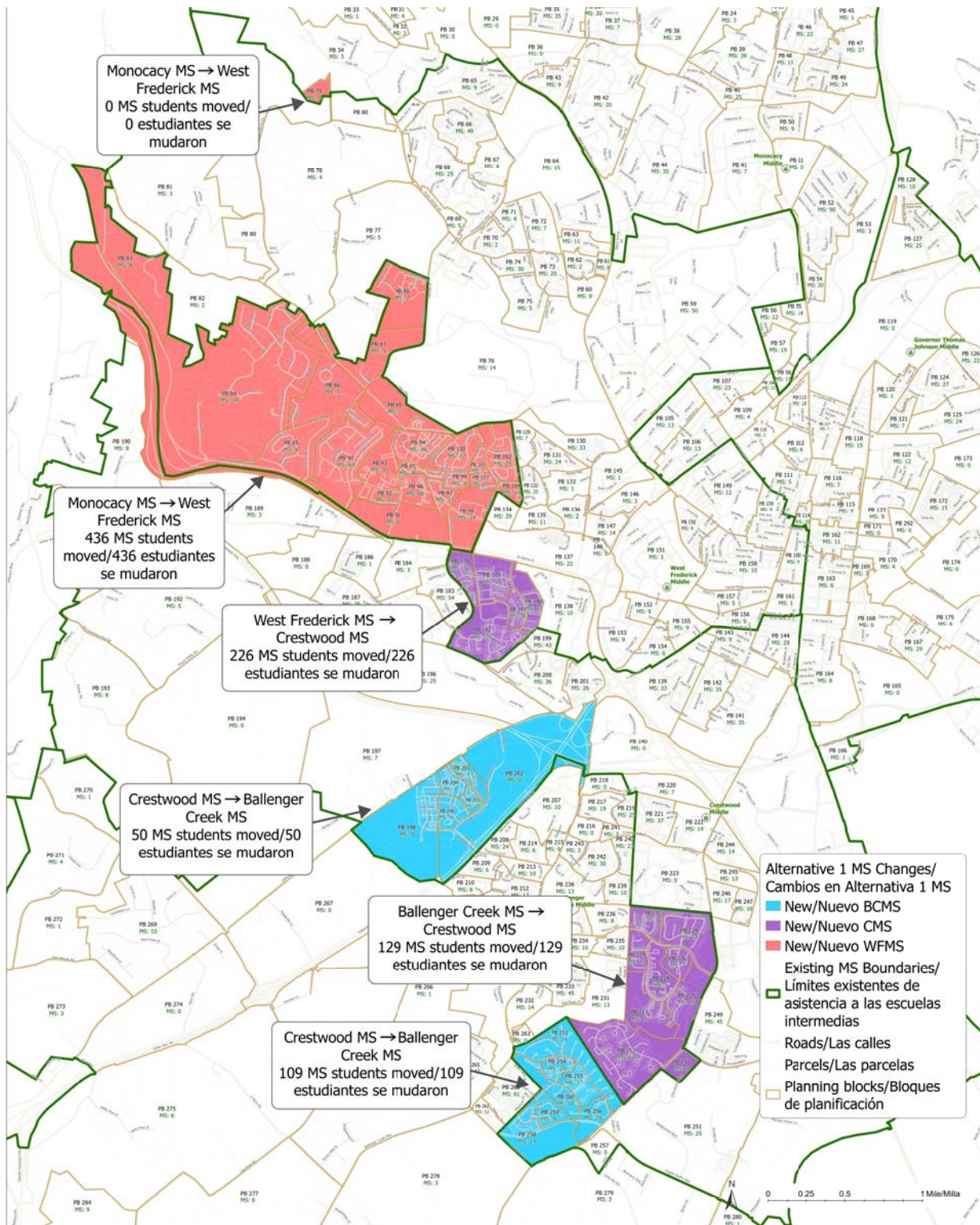
Alternative 1: Elementary School Attendance Areas



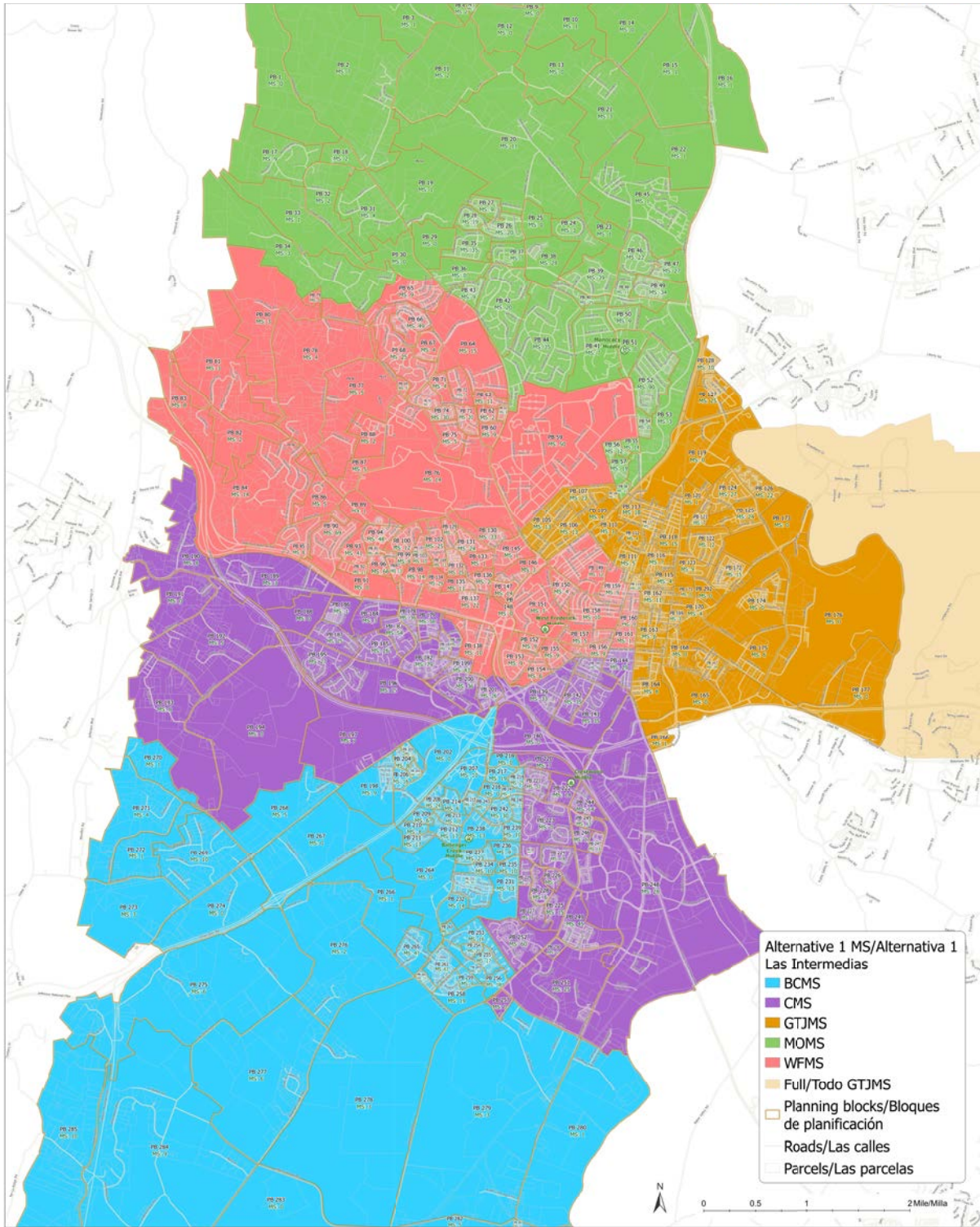
Middle Schools:

- Move the current Waverley ES attendance area (Planning Blocks 83, 84, 85, 86, 87, 88, 89, 90, 91, 92, 93, 94, 95, 96, 97, 98, 99, 100, 101, 102, 103 and 104) from Monocacy MS to West Frederick MS
- Move the current Hillcrest ES attendance area (Planning Blocks 178, 179, 180, 181 and 182) from West Frederick MS to Crestwood MS
- Move the Jefferson Park West and Jefferson Tech Park neighborhoods (Planning Blocks 198, 202, 203, 204, 205 and 206) from Crestwood MS to Ballenger Creek MS
- Move the Wellington Trace and Manors at Ballenger Creek neighborhoods (Planning Blocks 253, 254, 255, 256, 258, 259, 260) from Crestwood MS to Ballenger Creek MS
- Move Robin Meadows, Kingscrest Apartments and Kingsbrook neighborhoods (Planning Blocks 224, 225, 226, 227, 228, 229, 230, 250 and 252) from Ballenger Creek MS to Crestwood MS

Alternative 1: Changes at Middle School Level



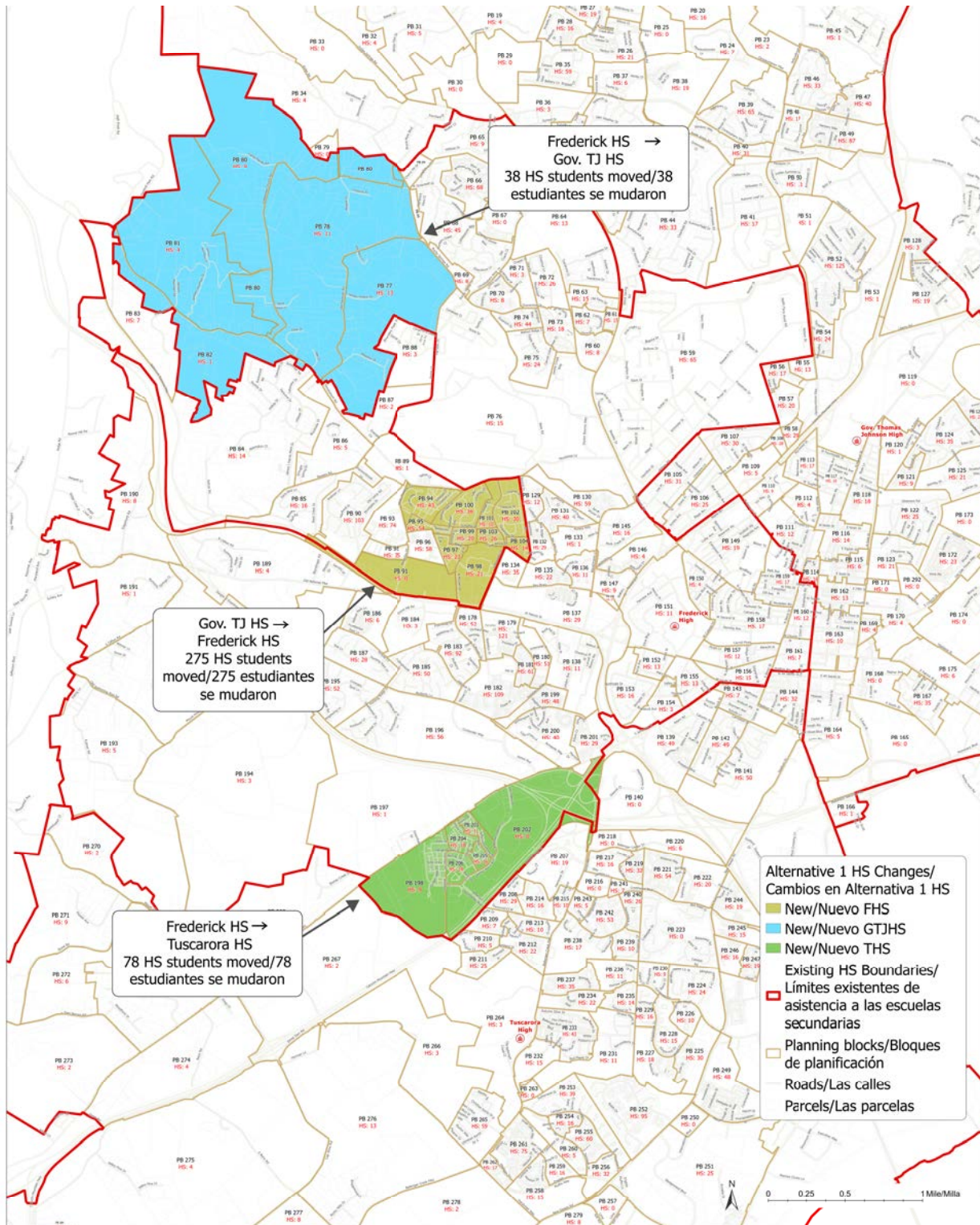
Alternative 1: Middle School Attendance Areas



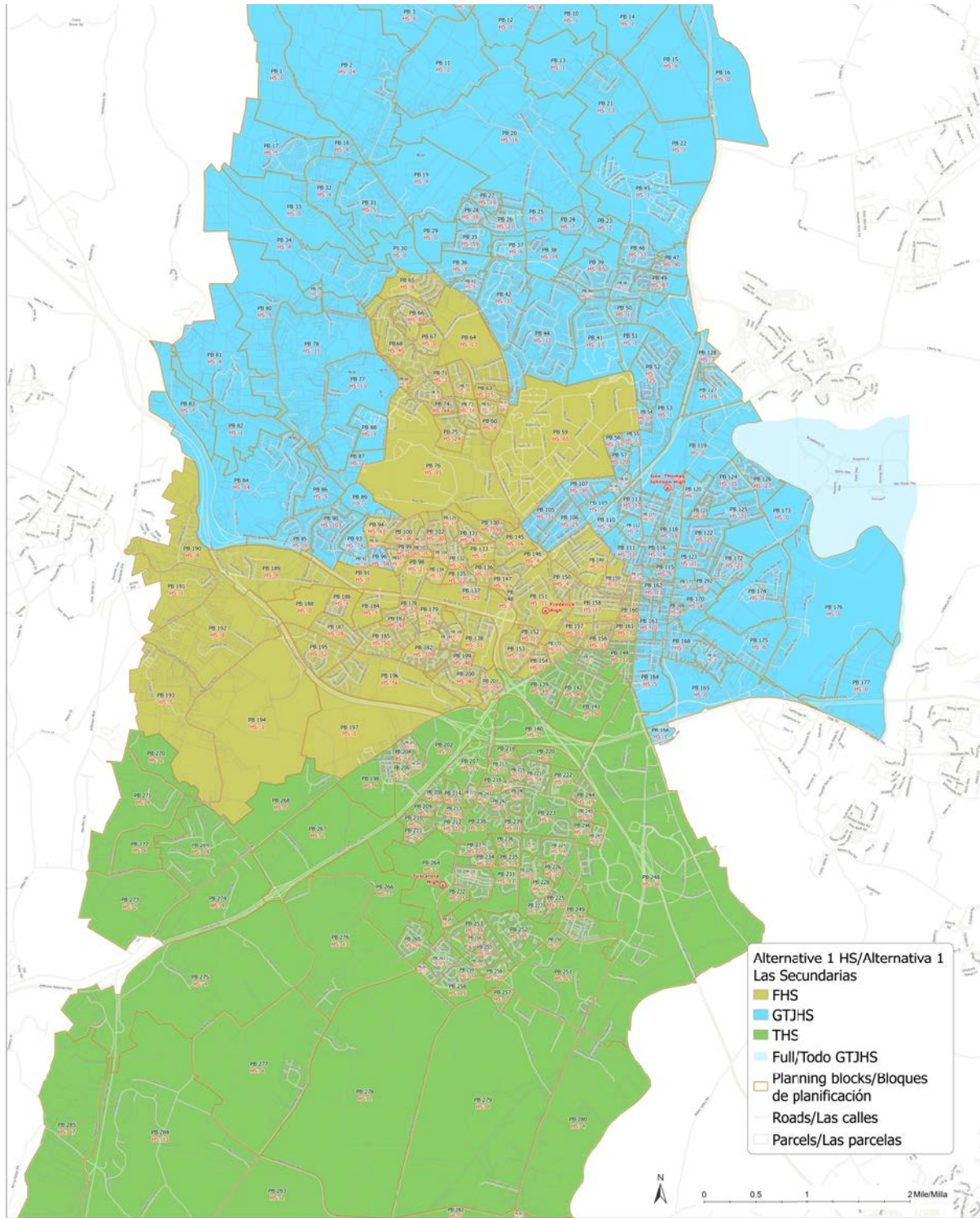
High Schools:

- Move the current Whittier ES attendance area west of Rocky Springs Road and Kemp Lane (Planning Blocks 77, 78, 80, 81 and 82) from Frederick HS to Governor Thomas Johnson HS
- Move the Waverley View, Commons of Avalon, Overlook at Avalon, Coventry, Baker Place Apartments, Little Brook, Willowdale Apartments, Willowcrest and the Residences at the Manor neighborhoods (Planning Blocks 91, 94, 95, 97, 98, 99, 100, 101, 102, 103 and 104) from Governor Thomas Johnson HS to Frederick HS
- Move Jefferson Park West and Jefferson Tech Park neighborhoods (Planning Blocks 198, 202, 203, 204, 205 and 206) from Frederick HS to Tuscarora HS

Alternative 1: Changes at High School Level



Alternative 1: High School Attendance Areas



Alternative 1 Highlights

In response to community comments, Alternative 1 impacts less students than the Superintendent's recommendation by moving a total of 1,804 students - 950 at the middle schools, 463 at the elementary schools and 391 at the high schools.

In contrast to the Superintendent's recommendation, neighborhoods on the west side of Yellow Springs Road and the Fort Detrick neighborhood remain in the West Frederick MS attendance area in Alternative 1. At the high school level, neighborhoods in the Whittier ES attendance area on the east side of Rocky Springs Road and Kemp Lane remain in the Frederick HS attendance area, and the neighborhoods surrounding Lincoln ES, Carrollton Park and McCurdy field remain in the Tuscarora HS attendance area.

All middle schools are below capacity in 2029 in Alternative 1, but Monocacy MS and West Frederick MS are not as equally balanced with Monocacy MS at 60% of capacity while West Frederick MS is at 88% of capacity. At the high school level, both Governor Thomas Johnson and Tuscarora high schools are under capacity in 2029 at 90% and 95% respectively, and Frederick HS is over capacity (123%). While Frederick HS is over capacity in both the Superintendent's recommendation and in Alternative 1, Frederick HS is over capacity at a greater magnitude in Alternative 1 than in the Superintendent's recommendation (110%).

At the elementary school level in Alternative 1, the Linton East neighborhood adjoining Tuscarora ES to the south remains in the Tuscarora ES attendance area, the Westview South neighborhood moves from Tuscarora ES to Ballenger Creek ES and the remainder of the Farmbrook neighborhood moves from Ballenger Creek ES to Orchard Grove ES. In 2029, Tuscarora ES enrollment (136%) and Ballenger Creek ES enrollment (143%) are higher in Alternative 1 than in the Superintendent's recommendation.

As in the Superintendent's recommendation, Orchard Grove ES is no longer a split feeder. In Alternative 1, Whittier ES is also not a split feeder and feeds entirely to West Frederick MS. Ballenger Creek ES feeds to both Ballenger Creek (38%) and Crestwood (62%) middle schools in Alternative 1, but the split is not as balanced as in the Superintendent's recommendation. In contrast, the split at Tuscarora ES to Ballenger Creek MS (51%) and Crestwood MS (49%) is better balanced in Alternative 1 than in the Superintendent's recommendation. Crestwood MS feeds to Frederick HS and Tuscarora HS in both the Superintendent's recommendation and Alternative 1. However, the split to the two high schools is better balanced in Alternative 1 with 52% of Crestwood MS going to Frederick HS and 48% going to Tuscarora HS. West Frederick MS feeds to both Frederick HS and Governor Thomas Johnson HS in both the Superintendent's recommendation and Alternative 1, but the split is better balanced in the Superintendent's recommendation with 53% attending Frederick HS and 47% attending Governor Thomas Johnson HS in contrast to 74% to Frederick HS and 26% to Governor Thomas Johnson HS in Alternative 1. Monocacy MS feeds entirely to Governor Thomas Johnson HS, and Ballenger Creek MS feeds entirely to Tuscarora HS.

Students eligible for Free and Reduced Meals is slightly less at Ballenger Creek ES in Alternative 1 than in the Superintendent's recommendation but is essentially the same at all other elementary schools. At the middle school level, students eligible for Free and Reduced Meals at West Frederick

MS is two percentage points less in Alternative 1 than in the Superintendent's recommendation but the same at all other middle schools. Finally, at the high school level, students eligible for Free and Reduced Meals at Frederick HS is lower in Alternative 1 than in the Superintendent's recommendation but higher at both Governor Thomas Johnson and Tuscarora high schools.

The number of multilingual learners is slightly less at Ballenger Creek ES in Alternative 1 but essentially the same as the Superintendent's recommendation for all other elementary schools. At the middle school level, the number of multilingual learners is slightly less at West Frederick MS in Alternative 1 but essentially the same as the Superintendent's recommendation at all other middle schools, differing by no more than 1 percentage point. At the high school level, the number of multilingual learners is slightly less at Frederick HS and slightly more Governor Thomas Johnson HS in Alternative 1 than in the Superintendent's recommendation.

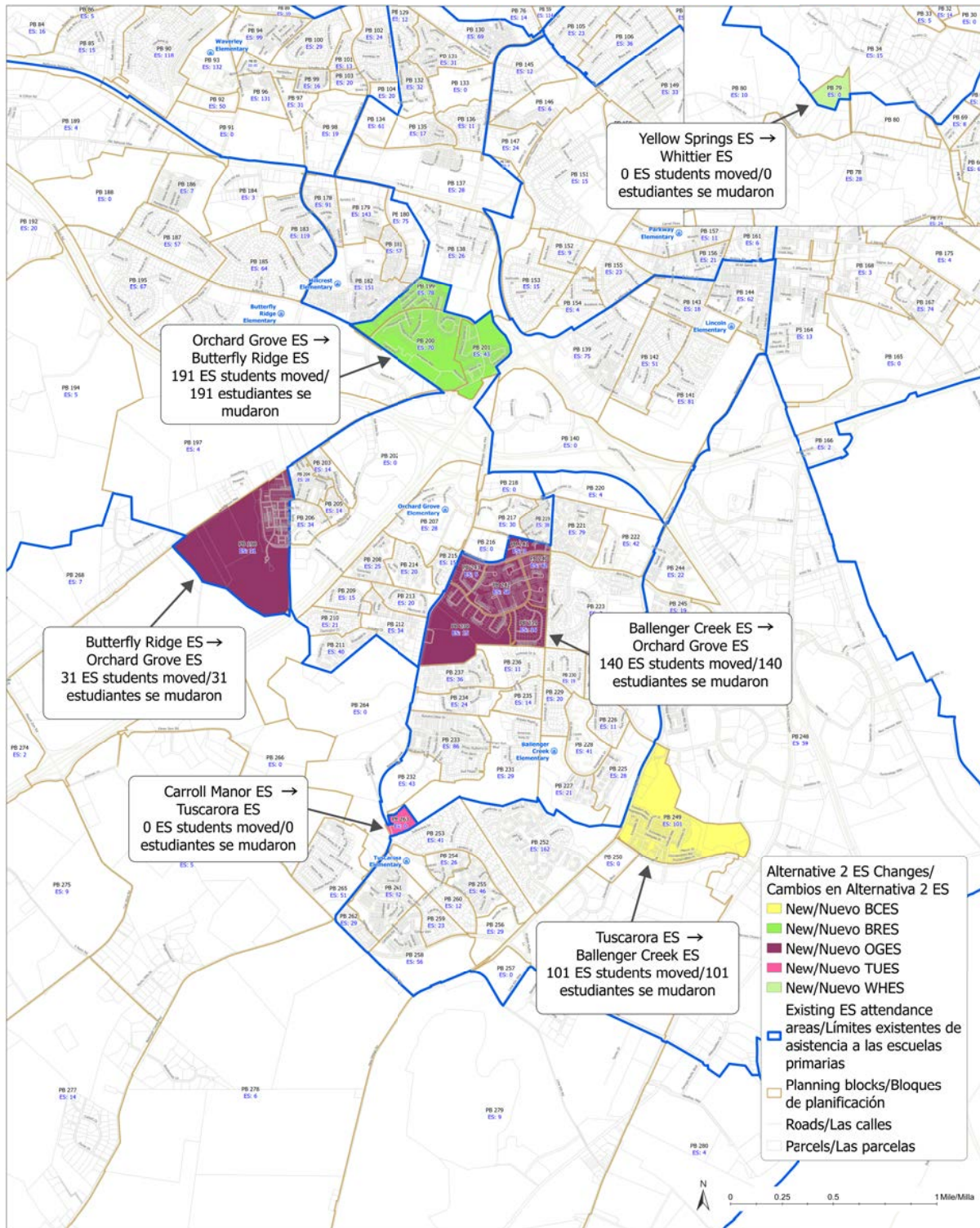
The number of walkers at the schools within the study area in Alternative 1 is less than those in the Superintendent's recommendation.

ALTERNATIVE 2 SUMMARY

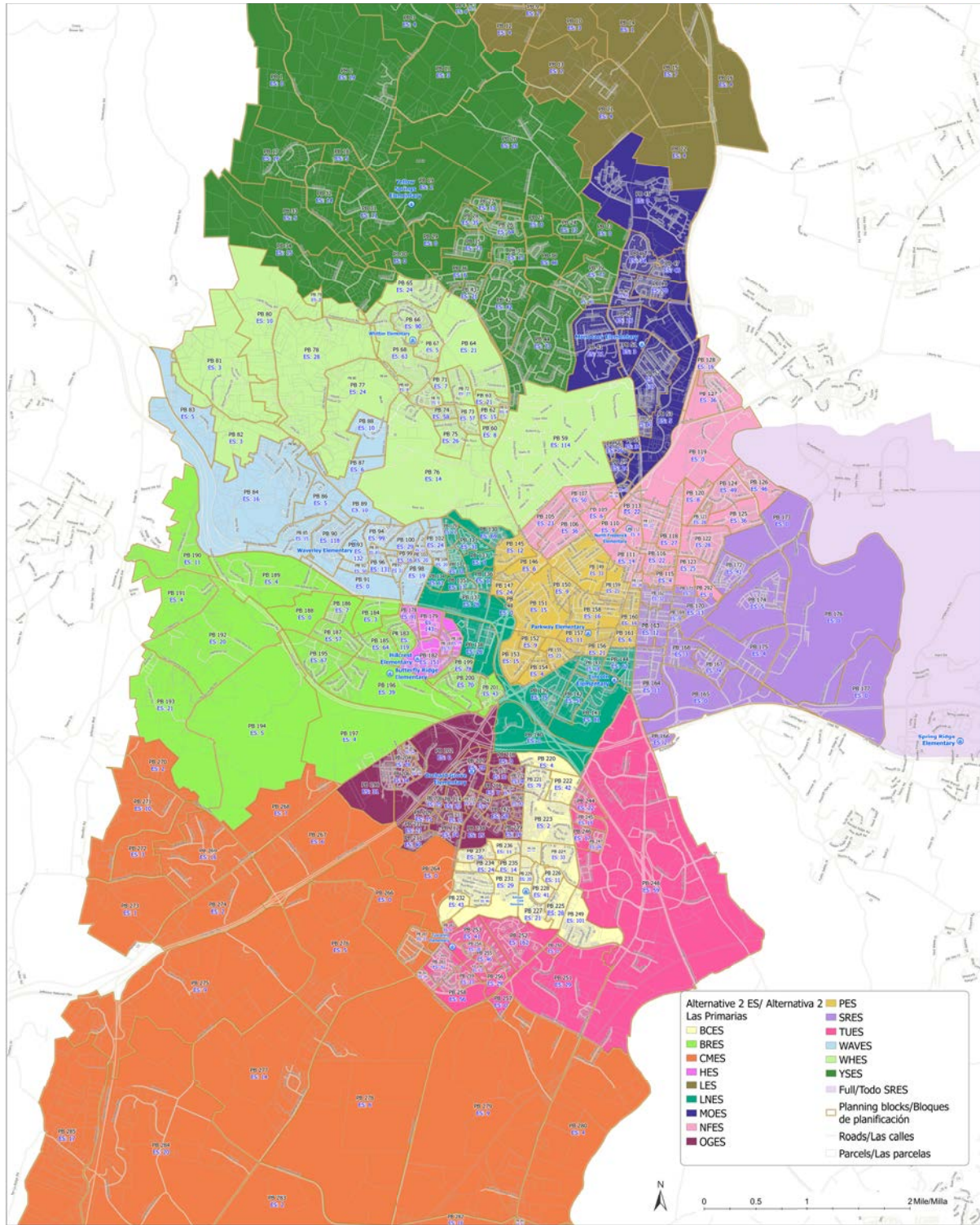
Elementary Schools:

- Move the neighborhoods on Himes Avenue (Planning Blocks 199, 200 and 201) from Orchard Grove ES to Butterfly Ridge ES
- Move the Jefferson Park West neighborhood (Planning 198) from Butterfly Ridge ES to Orchard Grove ES
- Move the Farmbrook neighborhood (Planning Blocks 238, 239, 240, 241, 242, and 243) on the east side of Ballenger Creek Pike from Ballenger Creek ES to Orchard Grove ES
- Move Westview South (Planning Block 249) from Tuscarora ES to Ballenger Creek ES

Alternative 2: Changes at Elementary School Level



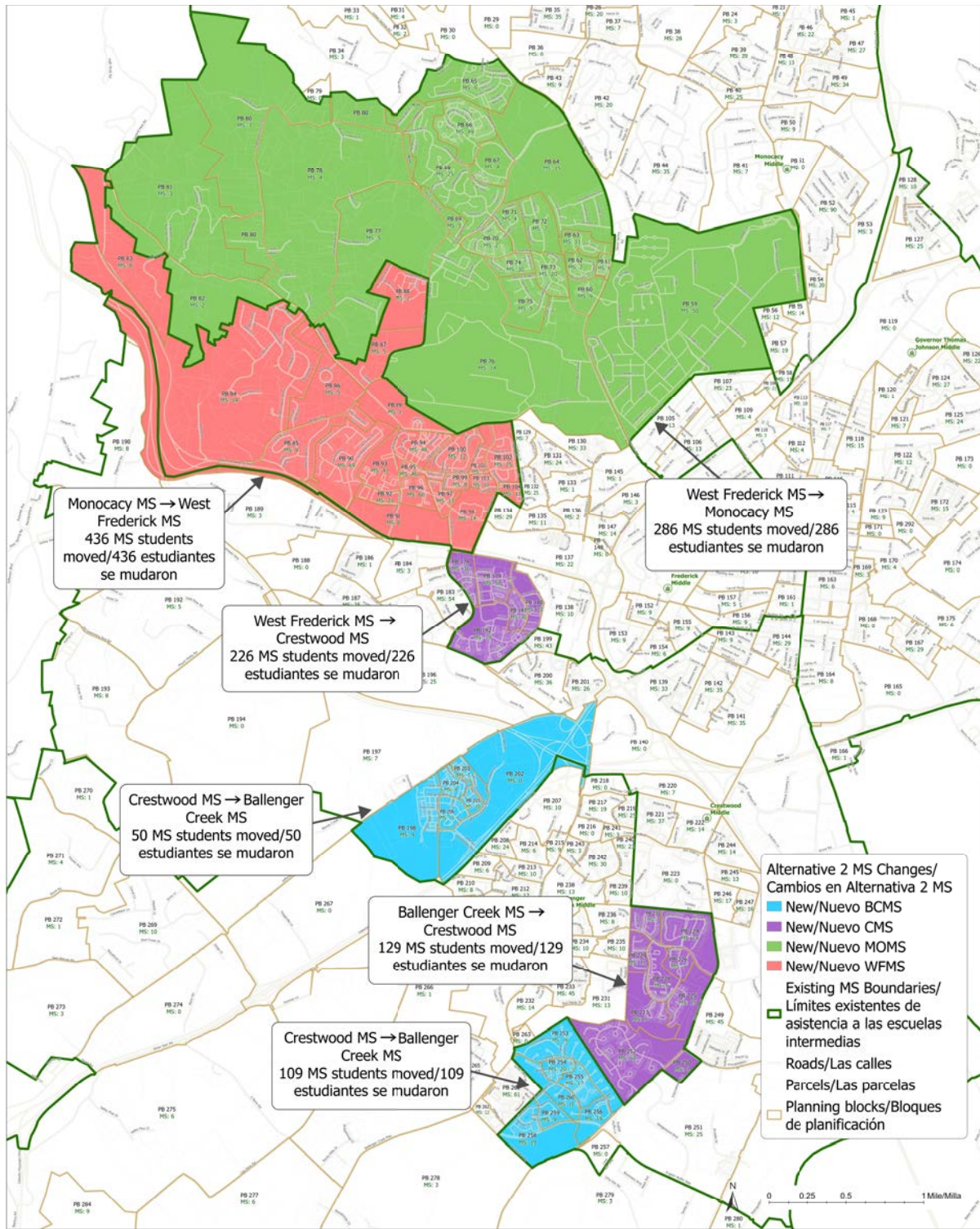
Alternative 2: Elementary School Attendance Areas



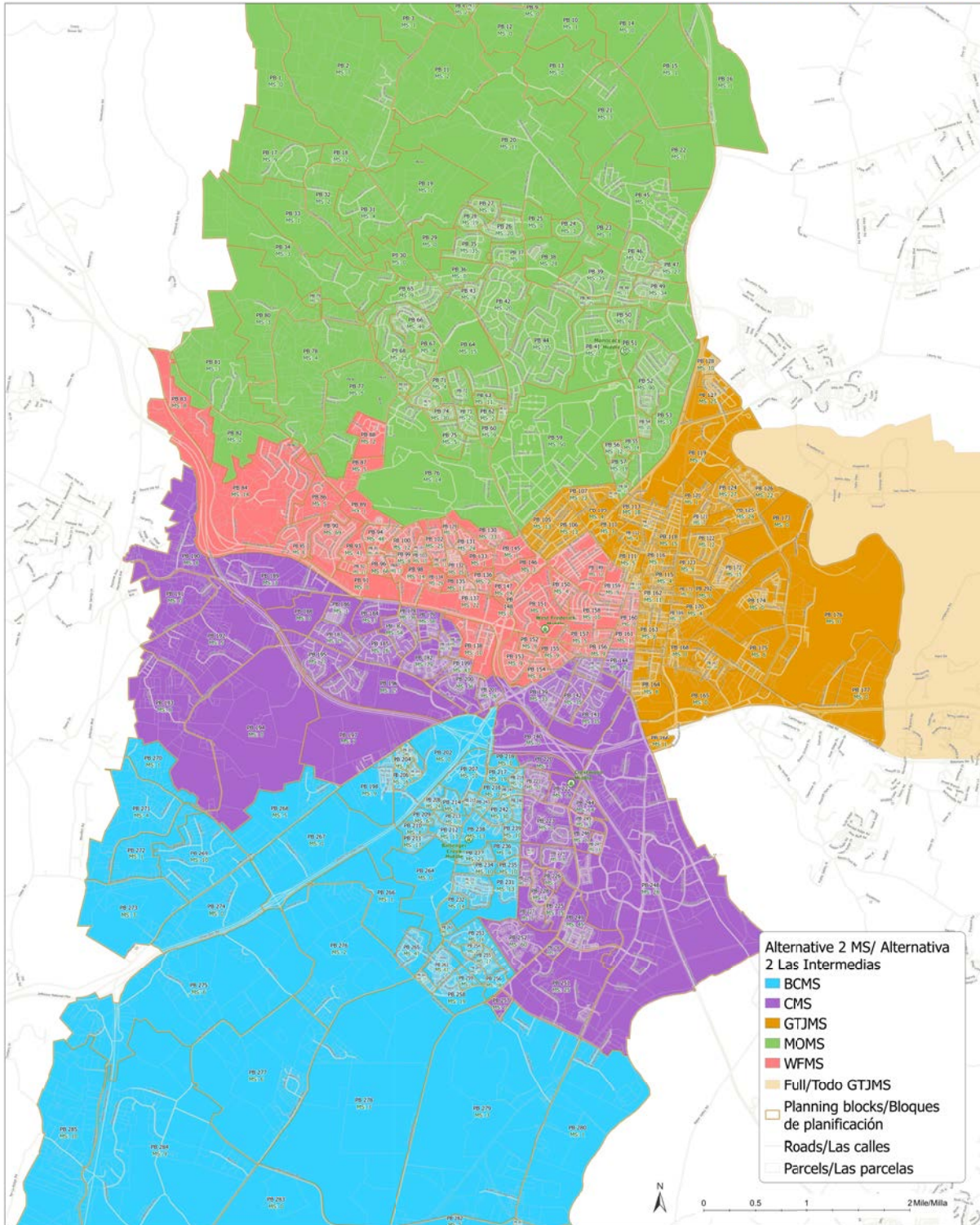
Middle Schools:

- Move current Waverley ES attendance area (Planning Blocks 83, 84, 85, 86, 87, 88, 89, 90, 91, 92, 93, 94, 95, 96, 97, 98, 99, 100, 101, 102, 103 and 104) from Monocacy MS to West Frederick MS
- Move current Whittier ES attendance area (Planning Blocks 59, 60, 61, 62, 63, 64, 65, 66, 67, 68, 69, 70, 71, 72, 73, 74, 75, 76, 77, 78, 80, 81, and 82) from West Frederick MS to Monocacy MS
- Move the current Hillcrest ES attendance area (Planning Blocks 178, 179, 180, 181 and 182) from West Frederick MS to Crestwood MS
- Move the Jefferson Park West and Jefferson Tech Park neighborhoods (Planning Blocks 198, 202, 203, 204, 205 and 206) from Crestwood MS to Ballenger Creek MS
- Move the Wellington Trace and Manors at Ballenger Creek neighborhoods (Planning Blocks 253, 254, 255, 256, 258, 259, 260) from Crestwood MS to Ballenger Creek MS
- Move Robin Meadows, Kingscrest Apartments and Kingsbrook neighborhoods (Planning Blocks 224, 225, 226, 227, 228, 229, 230, 250 and 252) from Ballenger Creek MS to Crestwood MS

Alternative 2: Changes at Middle School Level



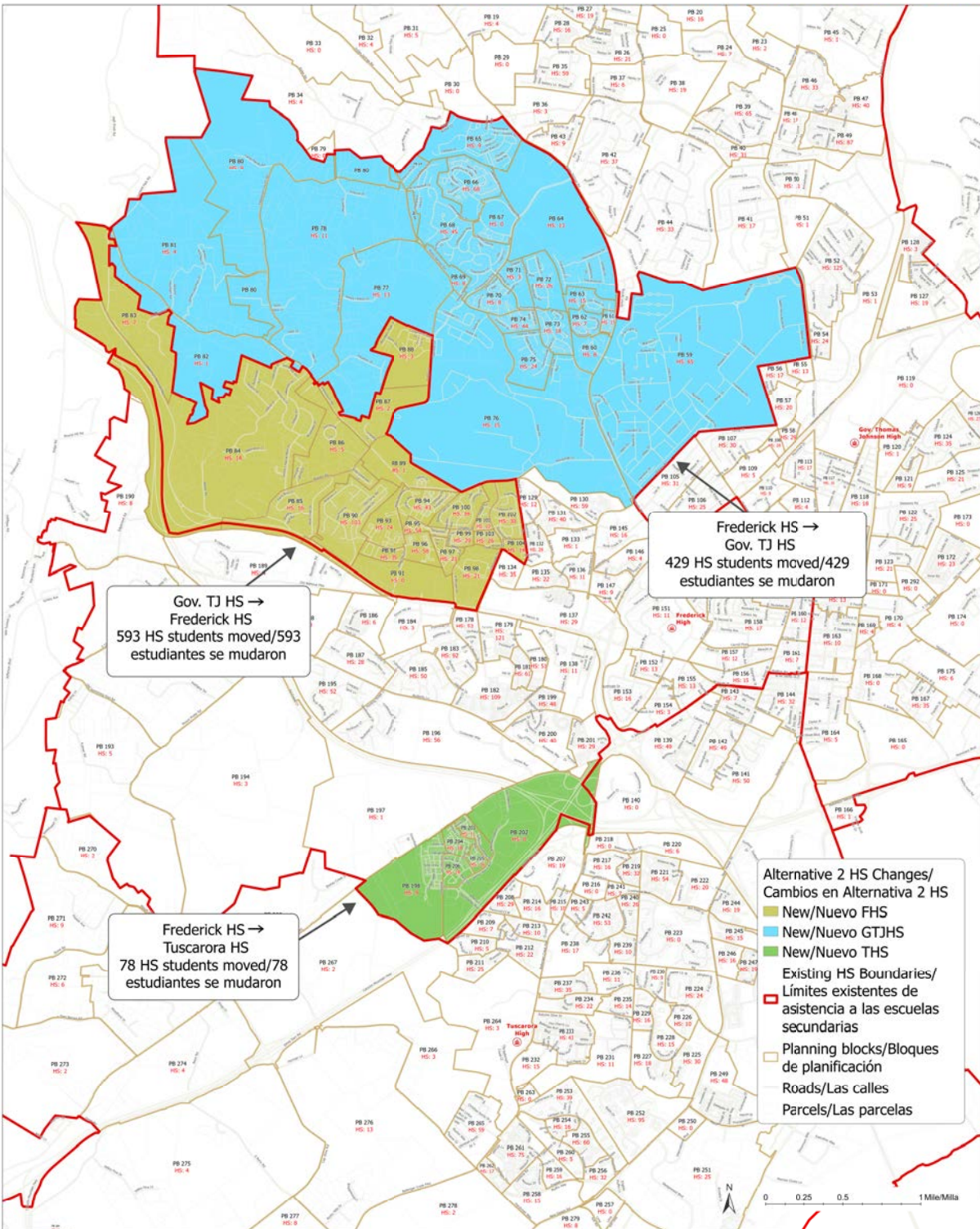
Alternative 2: Middle School Attendance Areas



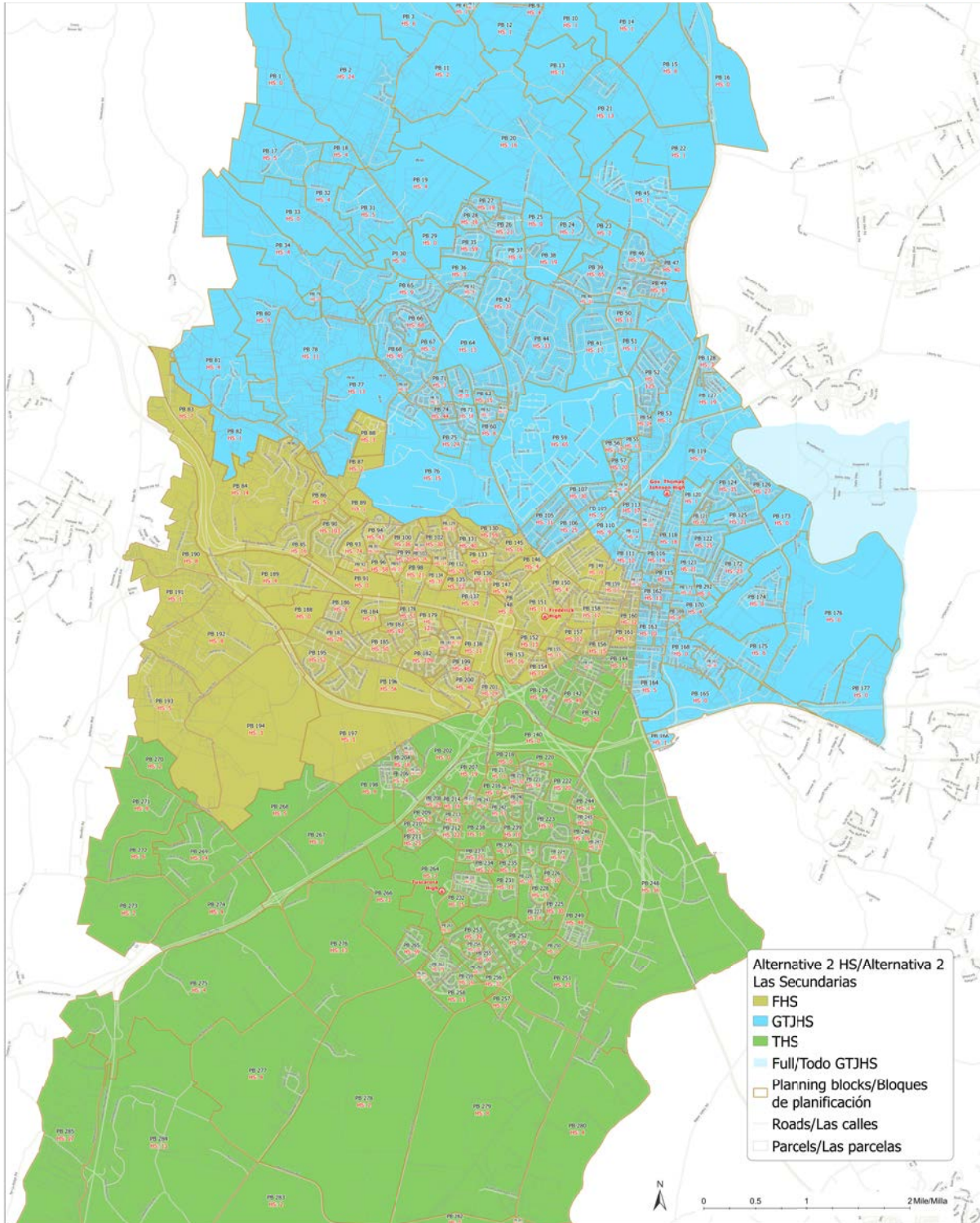
High Schools:

- Move current Waverley ES attendance area (Planning Blocks 83, 84, 85, 86, 87, 88, 89, 90, 91, 92, 93, 94, 95, 96, 97, 98, 99, 100, 101, 102, 103 and 104) from Governor Thomas Johnson HS to Frederick HS
- Move current Whittier ES attendance area (Planning Blocks 59, 60, 61, 62, 63, 64, 65, 66, 67, 68, 69, 70, 71, 72, 73, 74, 75, 76, 77, 78, 80, 81, and 82) from Frederick HS to Governor Thomas Johnson HS
- Move Jefferson Park West and Jefferson Tech Park neighborhoods (Planning Blocks 198, 202, 203, 204, 205 and 206) from Frederick HS to Tuscarora HS

Alternative 2: Changes at High School Level



Alternative 2: High School Attendance Areas



Alternative 2 Highlights

At a total of 2,799 students, the number of students impacted in Alternative 2 is higher than the Superintendent's recommendation and the other alternatives.

In contrast to the Superintendent's recommendation and Alternative 1, Alternative 2 moves the entire existing Whittier ES attendance area from West Frederick MS to Monocacy MS. At the high school level, the entire existing Whittier ES attendance area moves from Frederick HS to Governor Thomas Johnson HS and the existing Waverley ES attendance area moves from Governor Thomas Johnson HS to Frederick HS. The neighborhoods surrounding Lincoln ES, Carrollton Park and McCurdy field remain in the Tuscarora HS attendance area in Alternative 2. At the elementary level, Alternative 2 keeps the Linton East neighborhood adjoining Tuscarora ES to the south in the Tuscarora ES attendance area, moves the Westview South neighborhood to Ballenger Creek ES and moves the entire Farmbrook neighborhood from Ballenger Creek ES to Orchard Grove ES.

The attendance boundary changes in Alternative 2 not only eliminates the split at Orchard Grove ES, but also eliminates the split at Whittier ES in the Superintendent's recommendation so that all of Whittier ES feeds entirely to Monocacy MS. As in Alternative 1, the split at Tuscarora ES is better balanced than in the Superintendent's recommendation but the split at Ballenger Creek ES is less balanced. In Alternative 2, West Frederick MS is no longer split as it is in the Superintendent's recommendation and Alternative 1.

In Alternative 2, all middle schools are below capacity in 2029. However, the enrollments are not quite as balanced in this alternative as in the Superintendent's recommendation or other alternatives. West Frederick MS is at 61% capacity in 2029 while the other middle schools are projected to be at 91% (Ballenger Creek), 97% (Crestwood), 92% (Governor Thomas Johnson) and 93% (Monocacy). At the high school level, Frederick HS is over capacity in 2029 at 115% which is higher than the Superintendent's recommendation but lower than Alternative 1. Both Governor Thomas Johnson and Tuscarora high schools are under 100% of capacity.

Since proposed elementary school attendance boundaries are the same in Alternative 2 as in Alternative 1, the comparison of enrollment projections to the Superintendent's recommendation is the same as the comparison to Alternative 1 above.

Students eligible for Free and Reduced Meals at the middle school level in Alternative 2 are slightly less at Monocacy MS (41%) than in the Superintendent's recommendation and Alternative 1, but 7 to 9 percentage points higher at West Frederick MS (70%). At the high school level, students eligible for Free and Reduced Meals are higher at Frederick HS and lower at Governor Thomas Johnson HS in Alternative 2 than in the Superintendent's recommendation and Alternative 1. At Tuscarora HS, students eligible for Free and Reduced Meals in Alternative 2 is higher than the Superintendent's recommendation and the same as Alternative 1.

The number of multilingual learners at West Frederick MS in Alternative 2 is higher than the Superintendent's recommendation and Alternative 1. The number of multilingual learners at the other

middle schools is the same as in both the Superintendent recommendation and Alternative 1. At the high school level, the number of multilingual learners at Frederick HS is higher in Alternative 2 than in the Superintendent's recommendation and Alternative 1 while the number of multilingual learners at Governor Thomas Johnson HS is less.

The number of students with an individualized education program at each of the schools in the study area is the same for Alternative 2 as for the Superintendent's recommendation and Alternative 1.

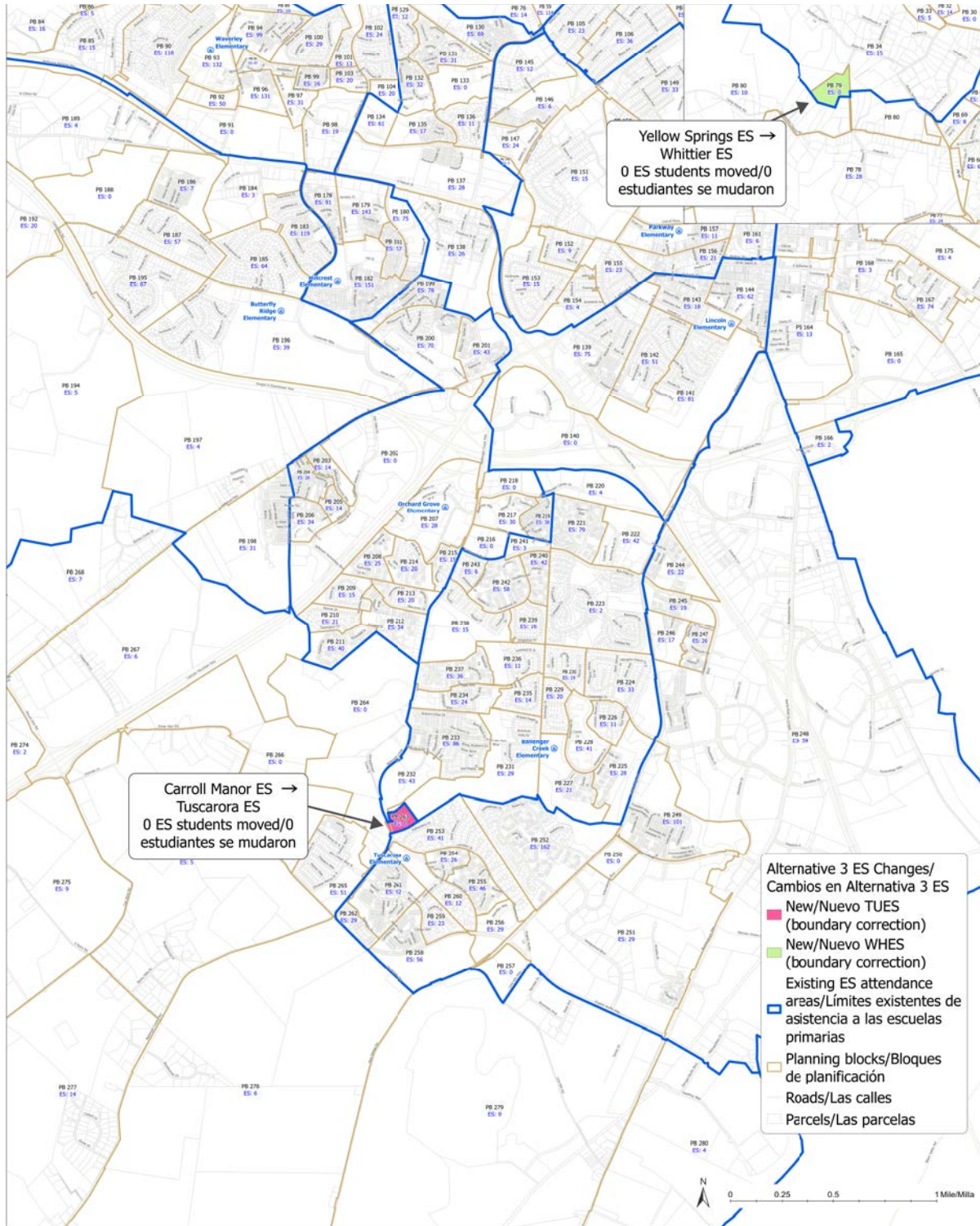
The number of walkers in Alternative 2 is the same as in Alternative 1 but less than the Superintendent's recommendation.

ALTERNATIVE 3 SUMMARY

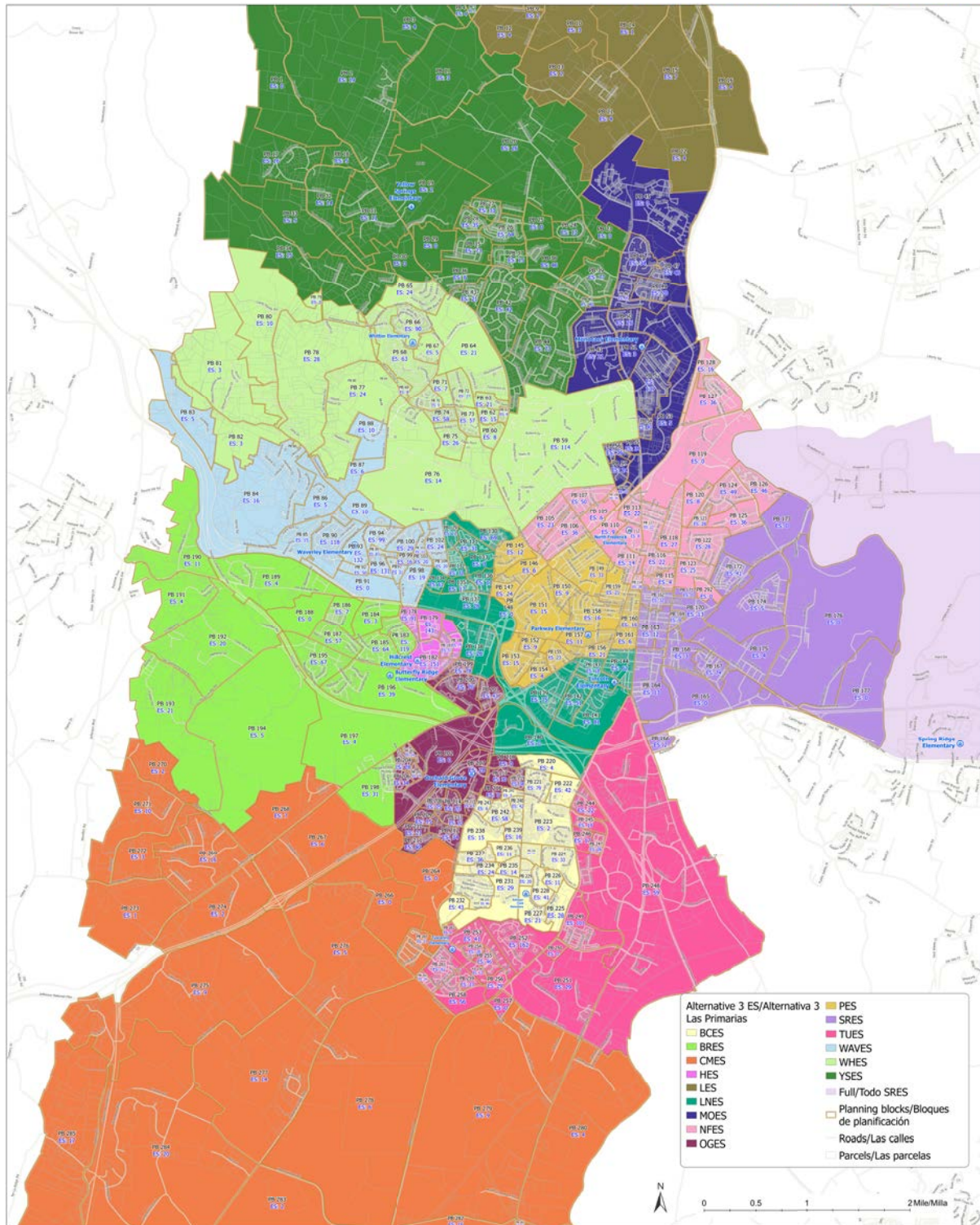
Elementary Schools:

- There are no changes to the current elementary attendance boundaries proposed except for Planning Blocks 79 and 263 which correct attendance boundaries to address transportation concerns

Alternative 3: Changes at Elementary School Level



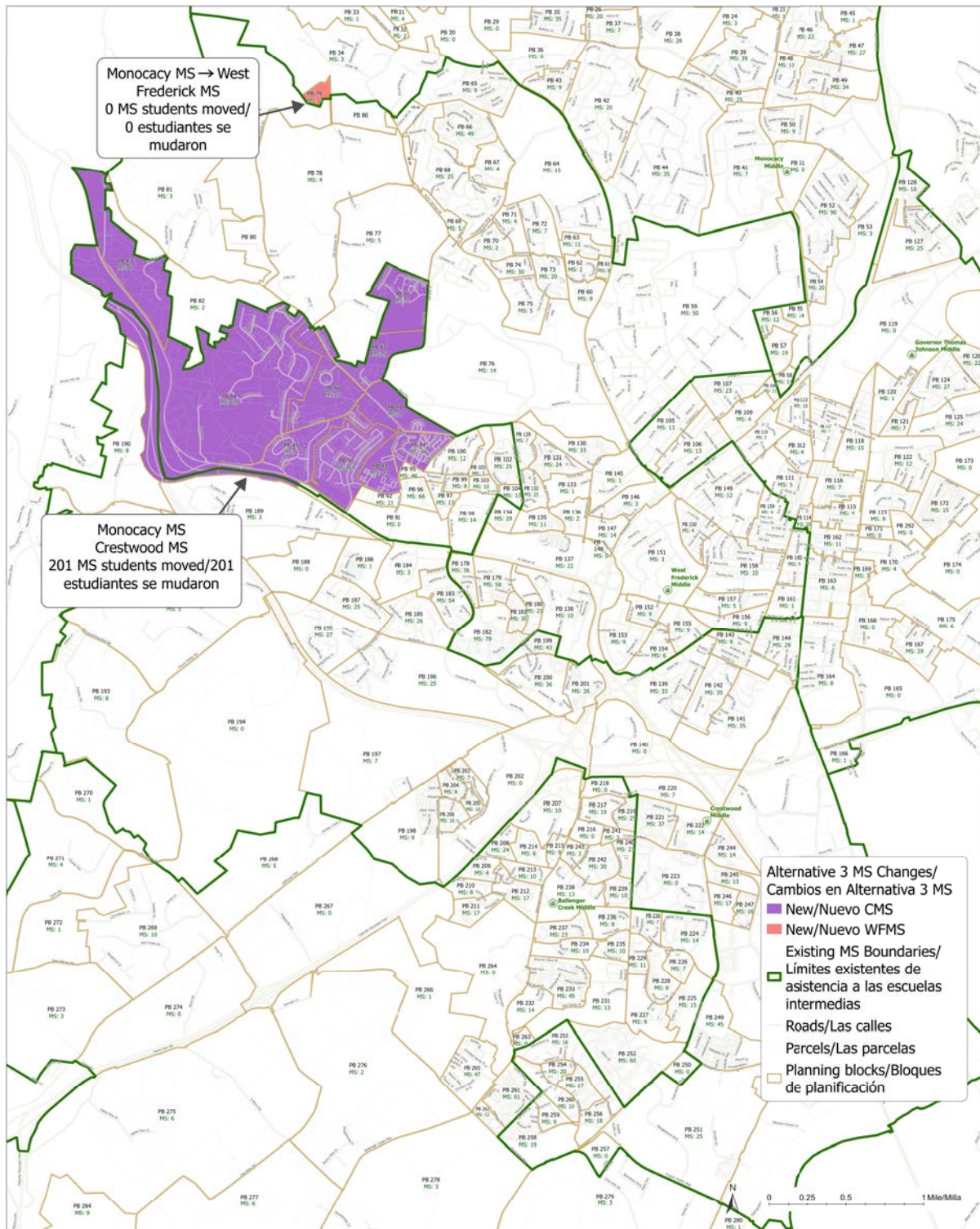
Alternative 3: Elementary School Attendance Areas



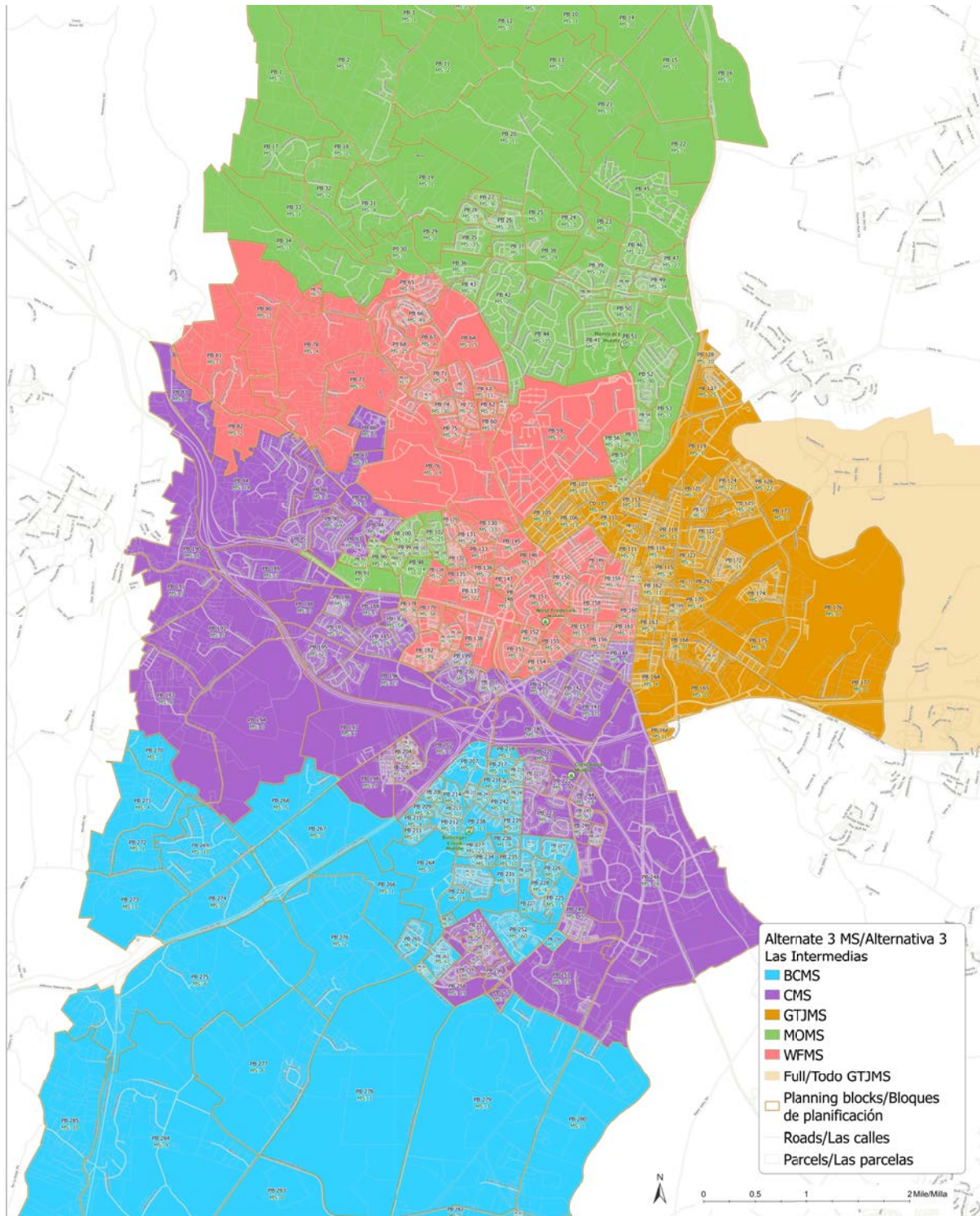
Middle Schools:

- Move the neighborhoods in the current Waverley ES attendance area west of Waverley Drive (excluding Elmwood Terrace) as well as the Waverley View neighborhood (Planning Blocks 83, 84, 85, 86, 87, 88, 89, 90, 93, and 94) from Monocacy MS to Crestwood MS

Alternative 3: Changes at Middle School Level



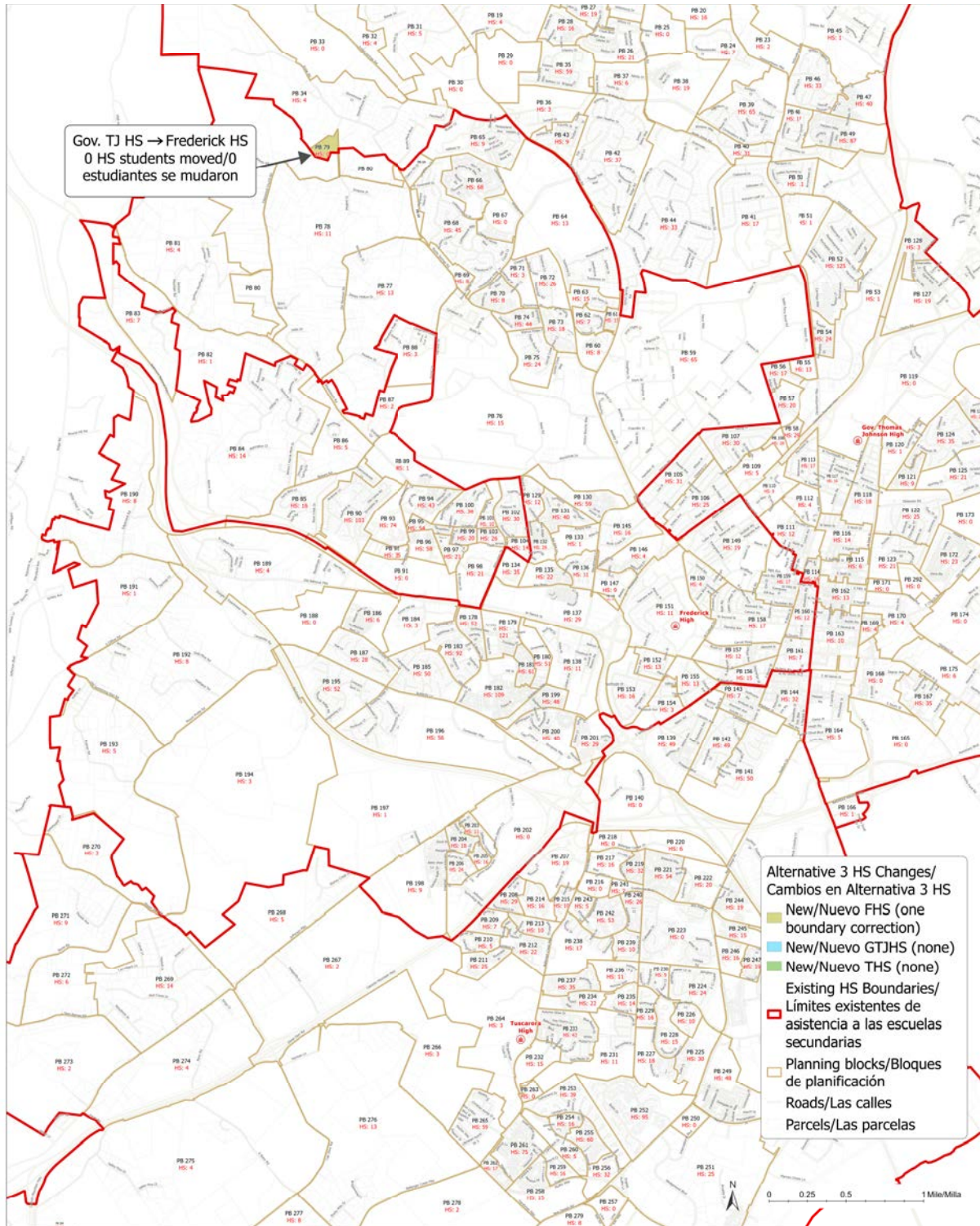
Alternative 3: Middle School Attendance Areas



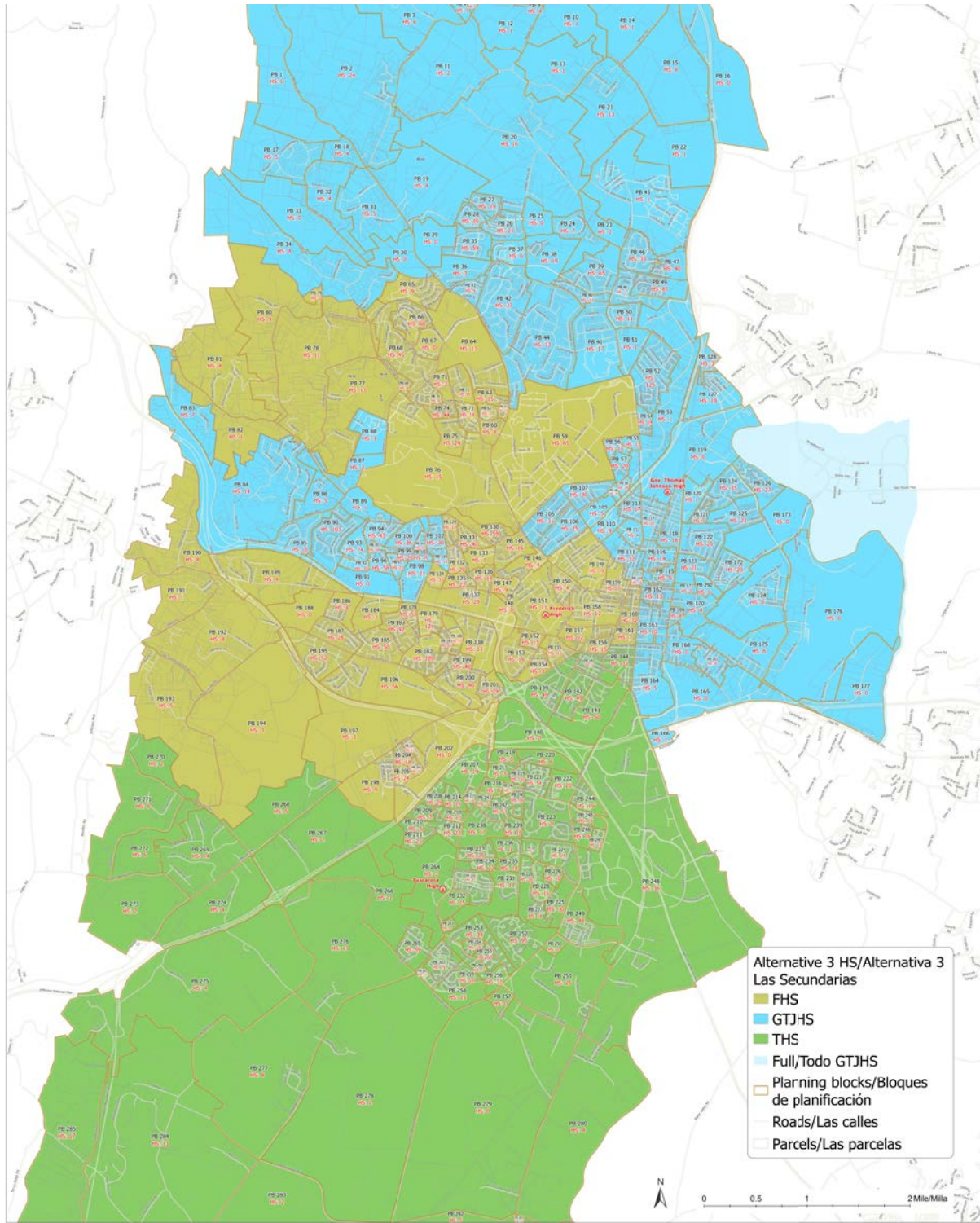
High Schools:

- There are no changes to the current high school attendance boundaries proposed except for Planning Block 79 which corrects attendance boundaries to address transportation concerns

Alternative 3: Changes at High School Level



Alternative 3: High School Attendance Areas



Alternative 3 Highlights

Alternative 3 addresses comments received regarding the number of students moved in the Superintendent's recommendation while meeting the primary intent of the redistricting scope of work to adjust middle school attendance boundaries in the study area to better balance enrollments at the five middle schools. Alternative 3 adjusts attendance boundaries at the middle school level only. This option moves the least number of students, moving just 201 students from Monocacy MS to Crestwood MS. No changes to the elementary or high school attendance boundaries are proposed in this alternative.

While this alternative does adjust middle school boundaries, it is the least balanced of the Superintendent's recommendation and three alternatives. In Alternative 3, Ballenger Creek MS is at 94% of capacity in 2029, Crestwood MS is at 101%, Governor Thomas Johnson MS is at 92%, Monocacy MS is at 80% and West Frederick MS is at 67%. Since no changes were made at the elementary and high school attendance areas, no relief is provided to either Ballenger Creek or Tuscarora elementary schools and their projected enrollments in 2029 are 144% and 143% respectively.

In Alternative 3, Crestwood MS will now be split to three high schools with students attending Frederick HS (34%), Governor Thomas Johnson HS (20%) and Tuscarora HS (46%). In addition, Alternative 3 creates a split feeder at Waverley ES with 49% attending Crestwood MS and 51% attending Monocacy MS. Orchard Grove ES remains a split feeder and the split feeder at Ballenger Creek ES remains at 81% to Ballenger Creek MS and 19% to Crestwood MS.

Students eligible for Free and Reduced Meals at Crestwood MS (61%) and West Frederick MS (59%) are slightly less than the other options while those at Monocacy MS (55%) are higher. At the high school level, students eligible for Free and Reduced Meals remains the same as they are now but are less than the other options at Frederick HS (51%) and more than the other options at Governor Thomas Johnson HS (51%).

Similarly, multilingual learners are less at Crestwood MS (14%) than the other options while those at WFMS (20%) are slightly higher than the Superintendent's recommendation and Alternative 1 but lower than Alternative 2. The percentage of multilingual learners at Frederick HS (17%) is lower than the other options while the percentage at Governor Thomas Johnson HS (14%) is higher. The number of students with individualized education programs at each of the schools in the study area is essentially the same for Alternative 3 as for the other options, differing by 1 percentage point at most.

The number of walkers in Alternative 3 is less than the Superintendent's recommendation (175 less) and Alternatives 1 and 2 (109 less).



APPENDIX



ENROLLMENTS

Elementary School Live-in Enrollments and Projections

		2022-23 Equated Live-in Enrollments (1)/ Viviendo dentro equivalentes (1)								Projected 2024-25 Equated Live-in Enrollments (1)/ Proyectado Matricula equivalente (1)								Projected 2029-30 Equated Live-in Enrollments (1)/ Proyectado Matricula equivalente (1)							
Elementary School/ Escuela Primaria	SRC/ Capacidad Nominal Estatal	Superintendent's Recommendation/ Recomendación de la Superintendente		Alternative 1/ Alternativa 1		Alternative 2/ Alternativa 2		Alternative 3/ Alternativa 3		Superintendent's Recommendation/Re comendación de la Superintendente		Alternative 1/ Alternativa 1		Alternative 2/ Alternativa 2		Alternative 3/ Alternativa 3		Superintendent's Recommendation/ Recomendación de la Superintendente		Alternative 1/ Alternativa 1		Alternative 2/ Alternativa 2		Alternative 3/ Alternativa 3	
		Ballenger Creek ES	588 **	621	106%	664	113%	664	113%	703	120%	725	123%	775	132%	775	132%	800	136%	816	139%	840	143%	840	143%
Butterfly Ridge ES	704 *	727	103%	727	103%	727	103%	567	81%	695	99%	695	99%	695	99%	590	84%	630	89%	630	89%	630	89%	630	89%
Carroll Manor ES	592 *	654	110%	533	90%	533	90%	533	90%	608	103%	526	89%	526	89%	526	89%	546	92%	546	92%	546	92%	546	92%
Hillcrest ES	534	597	112%	597	112%	597	112%	597	112%	572	107%	572	107%	572	107%	572	107%	556	104%	556	104%	556	104%	556	104%
Lewistown ES (2)	209	175	84%	175	84%	175	84%	175	84%	201	96%	201	96%	201	96%	201	96%	199	95%	199	95%	199	95%	199	95%
Lincoln ES	706 *	648	92%	648	92%	648	92%	648	92%	660	93%	660	93%	660	93%	660	93%	646	92%	646	92%	646	92%	646	92%
Monocacy ES	504 **	615	122%	615	122%	615	122%	615	122%	583	116%	583	116%	583	116%	583	116%	567	113%	567	113%	567	113%	567	113%
North Frederick ES	755	645	85%	645	85%	645	85%	645	85%	657	87%	657	87%	657	87%	657	87%	660	87%	660	87%	660	87%	660	87%
Orchard Grove ES	618 *	552	89%	610	99%	610	99%	630	102%	575	93%	606	98%	606	98%	622	101%	584	94%	584	94%	584	94%	592	96%
Parkway ES	236	261	111%	261	111%	261	111%	261	111%	278	118%	278	118%	278	118%	278	118%	271	115%	271	115%	271	115%	271	115%
Spring Ridge ES (2)	588 **	696	118%	696	118%	696	118%	696	118%	681	116%	681	116%	681	116%	681	116%	661	112%	661	112%	661	112%	661	112%
Tuscarora ES	610 *	708	116%	728	119%	728	119%	829	136%	767	126%	781	128%	781	128%	869	142%	820	134%	828	136%	828	136%	874	143%
Waverley ES	1016 *	906	89%	906	89%	906	89%	906	89%	934	92%	934	92%	934	92%	934	92%	933	92%	933	92%	933	92%	933	92%
Whittier ES	624	717	115%	717	115%	717	115%	717	115%	741	119%	741	119%	741	119%	741	119%	768	123%	768	123%	768	123%	768	123%
Yellow Springs ES	720 ***	683	95%	683	95%	683	95%	683	95%	662	92%	662	92%	662	92%	662	92%	604	84%	604	84%	604	84%	604	84%
Total	9004																								

*State Rated Capacity (SRC) updated by FCPS staff, August 2023
 *Capacidad nominal estatal actualizada por el personal de FCPS, agosto de 2023
 **SRC reflects capacity when current renovation is completed fall 2024 and 2025
 **La capacidad nominal estatal refleja la capacidad cuando se complete la renovación actual en el otoño de 2024 y 2025
 ***Yellow Springs ES SRC reflects SRC after replacement school opens in fall 2026
 ***Yellow Springs ES SRC refleja SRC después de que la escuela de reemplazo abra en el otoño de 2026

- (1) Equated enrollments include students who live within the recommended attendance area, students who attend a special program from outside the attendance area, and the number of equated preK seats
 (1) Las inscripciones equivalentes incluyen estudiantes que viven dentro del área de asistencia recomendada, estudiantes que asisten a un programa especial fuera del área de asistencia y la cantidad de cupos de preKínder equiparados
 (2) Enrollments at Spring Ridge ES and Lewistown ES reflect the entire attendance area for the school rather than the study area portion (west of the Monocacy River and Monocacy Middle School feeder portion only, respectively)



Middle School Live-in Enrollments and Projections

Middle School/ Escuela Intermedia	SRC/ Capacidad Nominal Estatal	2022-23 Live-in(1)/ Viviendo Dentro(1)						Projected 2024-25 Enrollment(1)/ Proyectado 2024-25 Matricula(1)						Projected 2029-30 Enrollment(1)/ Proyectado 2029-30 Matricula(1)											
		Superintendent's Recommendation/ Recomendación de la Superintendente		Alternative 1/ Alternativa 1		Alternative 2/ Alternativa 2		Alternative 3/ Alternativa 3		Superintendent's Recommendation/ Recomendación de la Superintendente		Alternative 1/ Alternativa 1		Alternative 2/ Alternativa 2		Alternative 3/ Alternativa 3		Superintendent's Recommendation/ Recomendación de la Superintendente		Alternative 1/ Alternativa 1		Alternative 2/ Alternativa 2		Alternative 3/ Alternativa 3	
Ballenger Creek MS	859	870	101%	870	101%	870	101%	840	98%	808	94%	808	94%	808	94%	779	91%	784	91%	775	90%	779	91%	805	94%
Crestwood MS	1168 *	1017	87%	1017	87%	1017	87%	1022	88%	1071	92%	1071	92%	1068	91%	1095	94%	1130	97%	1136	97%	1136	97%	1185	101%
Gov. Thomas Johnson MS (2)	838	608	73%	608	73%	608	73%	608	73%	602	72%	602	72%	602	72%	602	72%	773	92%	773	92%	773	92%	773	92%
Monocacy MS	914	698	76%	594	65%	880	96%	829	91%	674	74%	581	64%	859	94%	778	85%	649	71%	547	60%	847	93%	729	80%
West Frederick MS	1094	901	82%	1005	92%	719	66%	795	73%	815	74%	904	83%	633	58%	715	65%	864	79%	961	88%	664	61%	738	67%
Total	4873																								

*State Rated Capacity (SRC) updated by FCPS staff, August 2023

*Capacidad nominal estatal actualizada por el personal de FCPS, agosto de 2023

(1)Live-in enrollments include students who live within the recommended attendance area and students who attend a special program from outside the attendance area

(1)Las "inscripciones viviendo dentro" incluyen estudiantes que viven dentro del área de asistencia recomendada y estudiantes que asisten a un programa especial fuera del área de asistencia

(2) Enrollments at Gov. Thomas Johnson MS reflect the entire attendance area for the school rather than the study area portion (west of the Monocacy River)

(2) Las inscripciones en Gov. Thomas Johnson MS reflejan el área de asistencia completa de la escuela en lugar de la parte del área de estudio (al oeste del río Monocacy)

Note: The 5 year enrollment projections reflect proposed attendance boundaries for each of the alternatives, historic grade succession rates for each attendance area, and anticipated impact of residential developments currently under construction and anticipated to begin construction within the next five years. However, the impact of other residential developments within the study area that have initial development approval but require additional approvals to begin to record lots has not been included in this five year projection series. Anticipated enrollments from these developments cannot be accurately incorporated into a five year projection until the remainder of the development approvals are secured and anticipated start of construction is known.

Nota: Las proyecciones de inscripción en 5 años reflejan los límites de asistencia propuestos para cada una de las alternativas, las tasas históricas de sucesión de grados para cada área de asistencia y el impacto previsto de los desarrollos residenciales actualmente en construcción y que se prevé que comiencen a construirse dentro de los próximos cinco años. Sin embargo, el impacto de otros desarrollos residenciales dentro del área de estudio que cuentan con aprobación de desarrollo inicial pero requieren aprobaciones adicionales para comenzar a registrar lotes no se ha incluido en esta serie de proyecciones de cinco años. Las inscripciones anticipadas de estos desarrollos no se pueden incorporar con precisión en una proyección de cinco años hasta que se obtenga el resto de las aprobaciones de desarrollo y se conozca el inicio previsto de la construcción.



High School Live-in Enrollments and Projections

		2022-23 Live-in(1)/ Viviendo Dentro(1)								Projected 2024-25 Enrollment(1)/ Proyectado 2024-25 Matricula(1)								Projected 2029-30 Enrollment(1)/ Proyectado 2029-30 Matricula(1)							
High School/ Escuela Secundaria	SRC/ Capacidad Nominal Estatal	Superintendent's Recommendation/ Recomendación de la Superintendente		Alternative 1/ Alternativa 1		Alternative 2/ Alternativa 2		Alternative 3/ Alternativa 3		Superintendent's Recommendation/ Recomendación de la Superintendente		Alternative 1/ Alternativa 1		Alternative 2/ Alternativa 2		Alternative 3/ Alternativa 3		Superintendent's Recommendation/ Recomendación de la Superintendente		Alternative 1/ Alternativa 1		Alternative 2/ Alternativa 2		Alternative 3/ Alternativa 3	
Frederick HS	1601	1733	108%	1937	121%	1864	116%	1778	111%	1859	116%	2078	130%	2024	126%	1866	117%	1758	110%	1965	123%	1845	115%	1714	107%
Gov. Thomas Johnson HS (2)	2171	2288	105%	1897	87%	1970	91%	2134	98%	2456	113%	2045	94%	2100	97%	2338	108%	2310	106%	1948	90%	2077	96%	2242	103%
Tuscarora HS	1749	1687	96%	1874	107%	1874	107%	1796	103%	1644	94%	1815	104%	1815	104%	1744	100%	1523	87%	1659	95%	1659	95%	1642	94%
Total	5521																								

(1)Enrollments include students who live within the recommended attendance area and students who attend a special program from outside the attendance area
 (1)Las "inscripciones viviendo dentro" incluyen estudiantes que viven dentro del área de asistencia recomendada y estudiantes que asisten a un programa especial fuera del área de asistencia
 (2) Enrollment at Gov. Thomas Johnson HS reflects the entire attendance area for the school rather than the study area portion (west of the Monocacy River)
 (2) Las inscripciones en Gov. Thomas Johnson HS reflejan el área de asistencia completa de la escuela en lugar de la parte del área de estudio (al oeste del río Monocacy)

Note: The 5 year enrollment projections reflect proposed attendance boundaries for each of the alternatives, historic grade succession rates for each attendance area, and anticipated impact of residential developments currently under construction and anticipated to begin construction within the next five years. However, the impact of other residential developments within the study area that have initial development approval but require additional approvals to begin to record lots has not been included in this five year projection series. Anticipated enrollments from these developments cannot be accurately incorporated into a five year projection until the remainder of the development approvals are secured and anticipated start of construction is known.

Nota: Las proyecciones de inscripción en 5 años reflejan los límites de asistencia propuestos para cada una de las alternativas, las tasas históricas de sucesión de grados para cada área de asistencia y el impacto previsto de los desarrollos residenciales actualmente en construcción y que se prevé que comiencen a construirse dentro de los próximos cinco años. Sin embargo, el impacto de otros desarrollos residenciales dentro del área de estudio que cuentan con aprobación de desarrollo inicial pero requieren aprobaciones adicionales para comenzar a registrar lotes no se ha incluido en esta serie de proyecciones de cinco años. Las inscripciones anticipadas de estos desarrollos no se pueden incorporar con precisión en una proyección de cinco años hasta que se obtenga el resto de las aprobaciones de desarrollo y se conozca el inicio previsto de la construcción.



FEEDER PATTERNS

School/ Escuela	Current attendance boundaries/ Límites de asistencia actuales	Superintendent's Recommendation/ Recomendación de la Superintendente	Alternative 1/ Alternativa 1	Alternative 2/ Alternativa 2	Alternative 3/ Alternativa 3
Ballenger Creek ES	81% (BCMS); 19% (CMS)	50% (BCMS); 50% (CMS)	38% (BCMS); 62% (CMS)	38% (BCMS); 62% (CMS)	81% (BCMS); 19% (CMS)
Butterfly Ridge ES	CMS	CMS	CMS	CMS	CMS
Carroll Manor ES	BCMS	BCMS	BCMS	BCMS	BCMS
Hillcrest ES	WFMS	CMS	CMS	CMS	WFMS
Lewistown ES (1)	34% (MOMS); 66% (TMS)	34% (MOMS); 66% (TMS)	34% (MOMS); 66% (TMS)	34% (MOMS); 66% (TMS)	34% (MOMS); 66% (TMS)
Lincoln ES	50% (CMS); 50% (WFMS)	50% (CMS); 50% (WFMS)	50% (CMS); 50% (WFMS)	50% (CMS); 50% (WFMS)	50% (CMS); 50% (WFMS)
Monocacy ES	MOMS	MOMS	MOMS	MOMS	MOMS
North Frederick ES	GTJMS	GTJMS	GTJMS	GTJMS	GTJMS
Orchard Grove ES	50% (BCMS); 50% (CMS)	BCMS	BCMS	BCMS	50% (BCMS); 50% (CMS)
Parkway ES	WFMS	WFMS	WFMS	WFMS	WFMS
Spring Ridge ES	GTJMS	GTJMS	GTJMS	GTJMS	GTJMS
Tuscarora ES	36% (BCMS); 64% (CMS)	35% (BCMS); 65% (CMS)	51% (BCMS); 49% (CMS)	51% (BCMS); 49% (CMS)	36% (BCMS); 64% (CMS)
Waverley ES	MOMS	WFMS	WFMS	WFMS	49% (CMS); 51% (MOMS)
Whittier ES	WFMS	33% (MOMS); 67% (WFMS)	WFMS	MOMS	WFMS
Yellow Springs ES	MOMS	MOMS	MOMS	MOMS	MOMS

Estimated split feeders are based on number of current live-in K-5th graders
 (1) Reflects splits for the entire school attendance area rather than only the study area portion.

Las áreas divididas estimadas se basan en el número de estudiantes actuales de K-5.º grado que viven en el lugar
 (1) Refleja divisiones para toda el área de asistencia escolar en lugar de solo la parte del área de estudio.

School/ Escuela	Current attendance boundaries/ Límites de asistencia actuales	Superintendent's Recommendation/ Recomendación de la Superintendente	Alternative 1/ Alternativa 1	Alternative 2/ Alternativa 2	Alternative 3/ Alternativa 3
Ballenger Creek MS	THS	THS	THS	THS	THS
Crestwood MS	43% (FHS); 57% (THS)	66% (FHS); 34% (THS)	52% (FHS); 48% (THS)	52% (FHS); 48% (THS)	34% (FHS); 20% (GTJHS); 46% (THS)
Gov. Thomas Johnson MS (1)	65% (GTJHS); 35% (OHS)	65% (GTJHS); 35% (OHS)	65% (GTJHS); 35% (OHS)	65% (GTJHS); 35% (OHS)	65% (GTJHS); 35% (OHS)
Monocacy MS	GTJHS	GTJHS	GTJHS	GTJHS	GTJHS
West Frederick MS	FHS	53% (FHS); 47% (GTJHS)	74% (FHS); 26% (GTJHS)	FHS	FHS

Estimated split feeders are based on number of current live-in 6-8th graders
 (1) Reflects splits for the entire school attendance area rather than only the study area portion.

Las áreas divididas estimadas se basan en la cantidad de estudiantes de 6.º a 8.º grado que viven en el lugar
 (1) Refleja divisiones para toda el área de asistencia escolar en lugar de solo la parte del área de estudio.

NUMBER OF IMPACTED STUDENTS

		Number of Students moved/ Número de Estudiantes trasladados			
From/ De	To/ Para	Superintendent's Recommendation/ Recomendación de la Superintendente	Alternative 1/ Alternativa 1	Alternative 2/ Alternativa 2	Alternative 3/ Alternativa 3
Ballenger Creek ES	Orchard Grove ES	82	140	140	0
Butterfly Ridge ES	Orchard Grove ES	31	31	31	0
Orchard Grove ES	Butterfly Ridge ES	191	191	191	0
Tuscarora ES	Carroll Manor ES	121	0	0	0
Tuscarora ES	Ballenger Creek ES	0	101	101	0
Total ES students moved/ Total de alumnos de primaria trasladados		425	463	463	0

		Number of Students moved/ Número de Estudiantes trasladados			
From/ De	To/ Para	Superintendent's Recommendation/ Recomendación de la Superintendente	Alternative 1/ Alternativa 1	Alternative 2/ Alternativa 2	Alternative 3/ Alternativa 3
Ballenger Creek MS	Crestwood MS	129	129	129	0
Crestwood MS	Ballenger Creek MS	159	159	159	0
Monocacy MS	West Frederick MS	436	436	436	0
West Frederick MS	Crestwood MS	226	226	226	0
West Frederick MS	Monocacy MS	104	0	286	0
Monocacy MS	Crestwood MS	0	0	0	201
Total MS students moved/ Total de alumnos de intermedia trasladados		1054	950	1236	201

		Number of Students moved/ Número de Estudiantes trasladados			
From/ De	To/ Para	Superintendent's Recommendation/ Recomendación de la Superintendente	Alternative 1/ Alternativa 1	Alternative 2/ Alternativa 2	Alternative 3/ Alternativa 3
Frederick HS	Gov. Thomas Johnson HS	429	38	429	0
Frederick HS	Tuscarora HS	78	78	78	0
Gov. Thomas Johnson HS	Frederick HS	275	275	593	0
Tuscarora HS	Frederick HS	187	0	0	0
Total HS students moved/ Total de Alumnos de secundaria trasladados		969	391	1100	0

		Superintendent's Recommendation/ Recomendación de la Superintendente	Alternative 1/ Alternativa 1	Alternative 2/ Alternativa 2	Alternative 3/ Alternativa 3
Total number of students moved/ Número total de estudiantes trasladados:		2448	1804	2799	201

DEMOGRAPHICS

Students eligible for Free and Reduced Meals

School/ Escuela	Students eligible for free and reduced meals/ Estudiantes elegibles para comidas gratis o a precio reducido				
	Current attendance area/ Límites de asistencia actuales	Superintendent's Recommendation/ Recomendación de la Superintendente	Alternative 1/ Alternativa 1	Alternative 2/ Alternativa 2	Alternative 3/ Alternativa 3
BCES	49%	47%	43%	43%	49%
BRES	66%	64%	64%	64%	66%
CMES	20%	21%	20%	20%	20%
HES	92%	92%	92%	92%	92%
LES	47%	47%	47%	47%	47%
LNES	73%	73%	73%	73%	73%
MOES	61%	61%	61%	61%	61%
NFES	49%	49%	49%	49%	49%
OGES	49%	48%	49%	49%	49%
PES	38%	38%	38%	38%	38%
SRES	32%	32%	32%	32%	32%
TUES	42%	44%	44%	44%	42%
WAVES	82%	82%	82%	82%	82%
WHES	38%	38%	38%	38%	38%
YSES	23%	23%	23%	23%	23%

School/ Escuela	Students eligible for free and reduced meals/ Estudiantes elegibles para comidas gratis o a precio reducido				
	Current attendance area/ Límites de asistencia actuales	Superintendent's Recommendation/ Recomendación de la Superintendente	Alternative 1/ Alternativa 1	Alternative 2/ Alternativa 2	Alternative 3/ Alternativa 3
BCMS	35%	34%	34%	34%	35%
CMS	58%	66%	66%	66%	61%
GTJMS	44%	44%	44%	44%	44%
MOMS	58%	43%	43%	41%	55%
WFMS	59%	63%	61%	70%	59%

School/ Escuela	Students eligible for free and reduced meals/ Estudiantes elegibles para comidas gratis o a precio reducido				
	Current attendance area/ Límites de asistencia actuales	Superintendent's Recommendation/ Recomendación de la Superintendente	Alternative 1/ Alternativa 1	Alternative 2/ Alternativa 2	Alternative 3/ Alternativa 3
FHS	51%	61%	55%	63%	51%
GTJHS	51%	45%	48%	40%	51%
THS	39%	36%	39%	39%	39%

DEMOGRAPHICS

Multilingual Learners

School/ Escuela	Multilingual Learners/ Estudiantes Multilingües (ML)				
	Current attendance area/ Límites de asistencia actuales	Superintendent's Recommendation/ Recomendación de la Superintendente	Alternative 1/ Alternativa 1	Alternative 2/ Alternativa 2	Alternative 3/ Alternativa 3
BCES	12%	12%	10%	10%	12%
BRES	27%	24%	24%	24%	27%
CMES	8%	7%	8%	8%	8%
HES	61%	61%	61%	61%	61%
LES	8%	8%	8%	8%	8%
LNES	25%	25%	25%	25%	25%
MOES	16%	16%	16%	16%	16%
NFES	10%	10%	10%	10%	10%
OGES	9%	8%	10%	10%	9%
PES	10%	10%	10%	10%	10%
SRES	5%	5%	5%	5%	5%
TUES	10%	11%	10%	10%	10%
WAVES	41%	41%	41%	41%	41%
WHES	7%	7%	7%	7%	7%
YSES	4%	4%	4%	4%	4%

School/ Escuela	Multilingual Learners/ Estudiantes Multilingües (ML)				
	Current attendance area/ Límites de asistencia actuales	Superintendent's Recommendation/ Recomendación de la Superintendente	Alternative 1/ Alternativa 1	Alternative 2/ Alternativa 2	Alternative 3/ Alternativa 3
BCMS	5%	5%	5%	5%	5%
CMS	10%	19%	19%	19%	14%
GTJMS	8%	8%	8%	8%	8%
MOMS	15%	5%	6%	6%	11%
WFMS	20%	19%	17%	22%	20%

School/ Escuela	Multilingual Learners/ Estudiantes Multilingües (ML)				
	Current attendance area/ Límites de asistencia actuales	Superintendent's Recommendation/ Recomendación de la Superintendente	Alternative 1/ Alternativa 1	Alternative 2/ Alternativa 2	Alternative 3/ Alternativa 3
FHS	17%	22%	19%	25%	17%
GTJHS	14%	10%	12%	6%	14%
THS	6%	5%	6%	6%	6%

DEMOGRAPHICS

Students with an Individualized Education Program (IEP)

School/ Escuela	Students with an IEP/ Estudiantes con un IEP				
	Current attendance area/ Límites de asistencia actuales	Superintendent's Recommendation/ Recomendación de la Superintendente	Alternative 1/ Alternativa 1	Alternative 2/ Alternativa 2	Alternative 3/ Alternativa 3
BCES	9%	8%	8%	8%	9%
BRES	11%	10%	10%	10%	11%
CMES	14%	14%	14%	14%	14%
HES	9%	9%	9%	9%	9%
LES	13%	13%	13%	13%	13%
LNES	11%	11%	11%	11%	11%
MOES	12%	12%	12%	12%	12%
NFES	11%	11%	11%	11%	11%
OGES	11%	12%	12%	12%	11%
PES	12%	12%	12%	12%	12%
SRES	11%	11%	11%	11%	11%
TUES	11%	11%	11%	11%	11%
WAVES	10%	10%	10%	10%	10%
WHES	10%	10%	10%	10%	10%
YSES	12%	12%	12%	12%	12%

School/ Escuela	Students with an IEP/ Estudiantes con un IEP				
	Current attendance area/ Límites de asistencia actuales	Superintendent's Recommendation/ Recomendación de la Superintendente	Alternative 1/ Alternativa 1	Alternative 2/ Alternativa 2	Alternative 3/ Alternativa 3
BCMS	10%	10%	10%	10%	10%
CMS	14%	13%	13%	13%	14%
GTJMS	13%	13%	13%	13%	13%
MOMS	12%	10%	11%	11%	11%
WFMS	12%	13%	13%	13%	12%

School/ Escuela	Students with an IEP/ Estudiantes con un IEP				
	Current attendance area/ Límites de asistencia actuales	Superintendent's Recommendation/ Recomendación de la Superintendente	Alternative 1/ Alternativa 1	Alternative 2/ Alternativa 2	Alternative 3/ Alternativa 3
FHS	11%	12%	12%	12%	11%
GTJHS	14%	13%	13%	13%	14%
THS	11%	11%	11%	11%	11%



NON-TRANSPORTED AREAS

The tables below show the number of students living in non-transported area of each attendance area. Non-transported areas are determined in accordance with Board of Education Policy 441.

School/ Escuela	Number of walkers/ Número de caminantes				
	Existing attendance areas/ Límites de asistencia actuales	Superintendent's Recommendation/ Recomendación de la Superintendente	Alternative 1/ Alternativa 1	Alternative 2/ Alternativa 2	Alternative 3/ Alternativa 3
Ballenger Creek ES	416	416	416	416	416
Butterfly Ridge ES	345	345	345	345	345
Carroll Manor ES	88	88	88	88	88
Hillcrest ES	517	517	517	517	517
Lewistown ES	0	0	0	0	0
Lincoln ES	285	285	285	285	285
Monocacy ES	211	211	211	211	211
North Frederick ES	156	156	156	156	156
Orchard Grove ES	218	218	218	218	218
Parkway ES	199	199	199	199	199
Spring Ridge ES	91	91	91	91	91
Tuscarora ES	354	233	354	354	354
Waverley ES	793	793	793	793	793
Whittier ES	166	166	166	166	166
Yellow Springs ES	0	0	0	0	0
TOTAL	3839	3718	3839	3839	3839

School/ Escuela	Number of walkers/ Número de caminantes				
	Existing attendance areas/ Límites de asistencia actuales	Superintendent's Recommendation/ Recomendación de la Superintendente	Alternative 1/ Alternativa 1	Alternative 2/ Alternativa 2	Alternative 3/ Alternativa 3
Ballenger Creek MS	545	585	585	585	545
Crestwood MS	51	120	120	120	51
Gov. Thomas Johnson MS	201	201	201	201	201
Monocacy MS	282	282	282	282	282
West Frederick MS	95	95	95	95	95
TOTAL	1174	1283	1283	1283	1174

School/ Escuela	Number of walkers/ Número de caminantes				
	Existing attendance areas/ Límites de asistencia actuales	Superintendent's Recommendation/ Recomendación de la Superintendente	Alternative 1/ Alternativa 1	Alternative 2/ Alternativa 2	Alternative 3/ Alternativa 3
Frederick HS	159	346	159	159	159
Gov. Thomas Johnson HS	622	622	622	622	622
Tuscarora HS	924	924	924	924	924
TOTAL	1705	1892	1705	1705	1705



RESIDENTIAL DEVELOPMENT PIPELINE - SUMMARY

Abbreviation/ Abreviatura	School/ Escuela	Total available units/ Total de unidades disponibles				
		Current/ Actuales	Superintendent's Recommendation/ Recomendación de la Superintendente	Alternative 1/ Alternativa 1	Alternative 2/ Alternativa 2	Alternative 3/ Alternativa 3
BCES	Ballenger Creek ES	113	113	196	196	113
BRES	Butterfly Ridge ES	572	503	503	503	572
CMES	Carroll Manor ES	68	68	68	68	68
HES	Hillcrest ES	32	32	32	32	32
LES	Lewistown ES	0	0	0	0	0
LNES	Lincoln ES	72	72	72	72	72
MOES	Monocacy ES	0	0	0	0	0
NFES	North Frederick ES	626	626	626	626	626
OGES	Orchard Grove Es	50	119	119	119	50
PES	Parkway ES	470	470	470	470	470
SRES	Spring Ridge ES	3468	3468	3468	3468	3468
TUES	Tuscarora ES	394	394	311	311	394
WAVES	Waverley ES	366	366	366	366	366
WHES	Whittier ES	509	509	509	509	509
YSES	Yellow Springs ES	388	388	388	388	388
Total ES:		7128	7128	7128	7128	7128
BCMS	Ballenger Creek MS	121	240	240	240	121
CMS	Crestwood MS	833	746	746	746	1510
GTJMS	Gov. Thomas Johnson MS	4094	4094	4094	4094	4094
MOMS	Monocacy MS	1065	488	388	897	388
WFMS	West Frederick MS	1015	1560	1660	1151	1015
Total MS:		7128	7128	7128	7128	7128
FHS	Frederick HS	1637	1009	1518	1686	1637
GTJHS	Gov. Thomas Johnson HS	4658	5167	4658	4490	4658
THS	Tuscarora HS	332	451	451	451	332
Total HS:		6627	6627	6627	6627	6627



RESIDENTIAL DEVELOPMENT PIPELINE - DETAILS

Development/ Desarrollo	Available units/ Unidades disponibles	Elementary attendance area/ Límites de asistencia a las Escuelas Primarias					Middle attendance area/ Límites de asistencia a las Escuelas Intermedias					High attendance area/ Límites de asistencia a las Escuelas Secundarias				
		Current/ Actuales	Superintendent's Recommendation/ Recomendación de la Superintendente	Alternative 1/ Alternativa 1	Alternative 2/ Alternativa 2	Alternative 3/ Alternativa 3	Current/ Actuales	Superintendent's Recommendation/ Recomendación de la Superintendente	Alternative 1/ Alternativa 1	Alternative 2/ Alternativa 2	Alternative 3/ Alternativa 3	Current/ Actuales	Superintendent's Recommendation/ Recomendación de la Superintendente	Alternative 1/ Alternativa 1	Alternative 2/ Alternativa 2	Alternative 3/ Alternativa 3
Ballenger Run PUD	53	BCES	BCES	BCES	BCES	BCES	BCMS	BCMS	BCMS	BCMS	BCMS	THS	THS	THS	THS	THS
Barrick	301	WHES	WHES	WHES	WHES	WHES	WFMS	WFMS	WFMS	MOMS	WFMS	FHS	GTJHS	FHS	GTJHS	FHS
Belle Air	4	LNES	LNES	LNES	LNES	LNES	WFMS	WFMS	WFMS	WFMS	WFMS	FHS	FHS	FHS	FHS	FHS
Birdseye View Estates (Bowers)	38	WAVES	WAVES	WAVES	WAVES	WAVES	MOMS	WFMS	WFMS	WFMS	CMS	GTJHS	GTJHS	GTJHS	FHS	GTJHS
Bowers Park	19	WAVES	WAVES	WAVES	WAVES	WAVES	MOMS	WFMS	WFMS	WFMS	CMS	GTJHS	GTJHS	GTJHS	FHS	GTJHS
Bowersox (Macallen)	13	NFES	NFES	NFES	NFES	NFES	GTJMS	GTJMS	GTJMS	GTJMS	GTJMS	GTJHS	GTJHS	GTJHS	GTJHS	GTJHS
Brickworks (pending master plan approval)	1260	SRES	SRES	SRES	SRES	SRES	GTJMS	GTJMS	GTJMS	GTJMS	GTJMS	GTJHS	GTJHS	GTJHS	GTJHS	GTJHS
Brooklawn	39	PES	PES	PES	PES	PES	WFMS	WFMS	WFMS	WFMS	WFMS	FHS	FHS	FHS	FHS	FHS
Cannon Hill Loft	34	SRES	SRES	SRES	SRES	SRES	GTJMS	GTJMS	GTJMS	GTJMS	GTJMS	GTJHS	GTJHS	GTJHS	GTJHS	GTJHS
Canterbury Station	194	NFES	NFES	NFES	NFES	NFES	GTJMS	GTJMS	GTJMS	GTJMS	GTJMS	GTJHS	GTJHS	GTJHS	GTJHS	GTJHS
Carroll Manor PUD	39	CMES	CMES	CMES	CMES	CMES	BCMS	BCMS	BCMS	BCMS	BCMS	THS	THS	THS	THS	THS
East Pat Lofts	17	SRES	SRES	SRES	SRES	SRES	GTJMS	GTJMS	GTJMS	GTJMS	GTJMS	GTJHS	GTJHS	GTJHS	GTJHS	GTJHS
Free and Medwid	101	WHES	WHES	WHES	WHES	WHES	WFMS	WFMS	WFMS	MOMS	WFMS	FHS	GTJHS	FHS	GTJHS	FHS
Grove Hill	67	BRES	BRES	BRES	BRES	BRES	CMS	CMS	CMS	CMS	CMS	FHS	FHS	FHS	FHS	FHS
Habitat for Humanity (All Saints/Ice St)	12	LNES	LNES	LNES	LNES	LNES	CMS	CMS	CMS	CMS	CMS	THS	THS	THS	THS	THS
Highland Trail	550	SRES	SRES	SRES	SRES	SRES	GTJMS	GTJMS	GTJMS	GTJMS	GTJMS	GTJHS	GTJHS	GTJHS	GTJHS	GTJHS
Jefferson Park West	69	BRES	OGES	OGES	OGES	BRES	CMS	BCMS	BCMS	BCMS	BCMS	CMS	THS	THS	THS	FHS
Jefferson Tech Park	50	OGES	OGES	OGES	OGES	OGES	CMS	BCMS	BCMS	BCMS	BCMS	CMS	THS	THS	THS	FHS
Junction at 511 and 524	115	PES	PES	PES	PES	PES	WFMS	WFMS	WFMS	WFMS	WFMS	FHS	FHS	FHS	FHS	FHS
Kellerton north (YSES)	324	YSES	YSES	YSES	YSES	YSES	MOMS	MOMS	MOMS	MOMS	MOMS	GTJHS	GTJHS	GTJHS	GTJHS	GTJHS
Kellerton south (WHES)	100	WHES	WHES	WHES	WHES	WHES	WFMS	MOMS	WFMS	MOMS	WFMS	FHS	GTJHS	FHS	GTJHS	FHS
Madison N Market	60	NFES	NFES	NFES	NFES	NFES	GTJMS	GTJMS	GTJMS	GTJMS	GTJMS	GTJHS	GTJHS	GTJHS	GTJHS	GTJHS
Millie's Delight	7	WHES	WHES	WHES	WHES	WHES	WFMS	WFMS	WFMS	MOMS	WFMS	FHS	GTJHS	FHS	GTJHS	FHS
Overlook at Long Branch (Shapiro/ Estates at Rosehaven Manor)*	101	SRES	SRES	SRES	SRES	SRES	GTJMS	GTJMS	GTJMS	GTJMS	GTJMS	N/A	N/A	N/A	N/A	N/A
Overlook Section 8	32	HES	HES	HES	HES	HES	WFMS	CMS	CMS	CMS	WFMS	FHS	FHS	FHS	FHS	FHS
Park Place at Ballenger Creek	29	CMES	CMES	CMES	CMES	CMES	BCMS	BCMS	BCMS	BCMS	BCMS	THS	THS	THS	THS	THS
Parkview	11	PES	PES	PES	PES	PES	WFMS	WFMS	WFMS	WFMS	WFMS	FHS	FHS	FHS	FHS	FHS
Renn Property	858	SRES	SRES	SRES	SRES	SRES	GTJMS	GTJMS	GTJMS	GTJMS	GTJMS	GTJHS	GTJHS	GTJHS	GTJHS	GTJHS
Residences at East Church	350	NFES	NFES	NFES	NFES	NFES	GTJMS	GTJMS	GTJMS	GTJMS	GTJMS	GTJHS	GTJHS	GTJHS	GTJHS	GTJHS
Riverwalk Apartments*	168	SRES	SRES	SRES	SRES	SRES	GTJMS	GTJMS	GTJMS	GTJMS	GTJMS	GTJHS	GTJHS	GTJHS	GTJHS	GTJHS
South Street Center	56	LNES	LNES	LNES	LNES	LNES	CMS	CMS	CMS	CMS	CMS	THS	THS	THS	THS	THS
Spring Bank	9	NFES	NFES	NFES	NFES	NFES	GTJMS	GTJMS	GTJMS	GTJMS	GTJMS	GTJHS	GTJHS	GTJHS	GTJHS	GTJHS
Summervale	296	BRES	BRES	BRES	BRES	BRES	CMS	CMS	CMS	CMS	CMS	FHS	FHS	FHS	FHS	FHS
Sycamore Ridge	309	WAVES	WAVES	WAVES	WAVES	WAVES	MOMS	WFMS	WFMS	WFMS	CMS	GTJHS	GTJHS	GTJHS	FHS	GTJHS
The Terrace	300	PES	PES	PES	PES	PES	WFMS	WFMS	WFMS	WFMS	WFMS	FHS	FHS	FHS	FHS	FHS
The Woods	5	PES	PES	PES	PES	PES	WFMS	WFMS	WFMS	WFMS	WFMS	FHS	FHS	FHS	FHS	FHS
Tuscarora Creek	64	YSES	YSES	YSES	YSES	YSES	MOMS	MOMS	MOMS	MOMS	MOMS	GTJHS	GTJHS	GTJHS	GTJHS	GTJHS
Villas at Manchester	60	BCES	BCES	BCES	BCES	BCES	CMS	CMS	CMS	CMS	CMS	THS	THS	THS	THS	THS
Visitation Academy	7	SRES	SRES	SRES	SRES	SRES	GTJMS	GTJMS	GTJMS	GTJMS	GTJMS	GTJHS	GTJHS	GTJHS	GTJHS	GTJHS
Waverley View PND	311	TUES	TUES	TUES	TUES	TUES	MOMS	WFMS	WFMS	WFMS	CMS	GTJHS	GTJHS	GTJHS	FHS	GTJHS
Wayside Apartments	73	SRES	SRES	SRES	SRES	SRES	GTJMS	GTJMS	GTJMS	GTJMS	GTJMS	GTJHS	GTJHS	GTJHS	GTJHS	GTJHS
West Park Village	140	BRES	BRES	BRES	BRES	BRES	CMS	CMS	CMS	CMS	CMS	FHS	FHS	FHS	FHS	FHS
Westridge*	400	SRES	SRES	SRES	SRES	SRES	GTJMS	GTJMS	GTJMS	GTJMS	GTJMS	N/A	N/A	N/A	N/A	N/A
Westview South MXD	83	TUES	TUES	BCES	BCES	TUES	CMS	CMS	CMS	CMS	CMS	THS	THS	THS	THS	THS
Total available units in study area/ Total de unidades disponibles en el área de estudio :	7128															

*Overlook at Long Branch and Westridge are located within Spring Ridge ES and Gov. Thomas Johnson MS only, but are outside the study area for high school.
 *Overlook en Long Branch y Westridge están ubicados dentro de Spring Ridge ES y Gov. Thomas Johnson MS únicamente, pero están fuera del área de estudio de la escuela secundaria

Highlighted cells indicate change from existing attendance areas
 Las celdas resaltadas indican un cambio de las áreas de asistencia existentes.